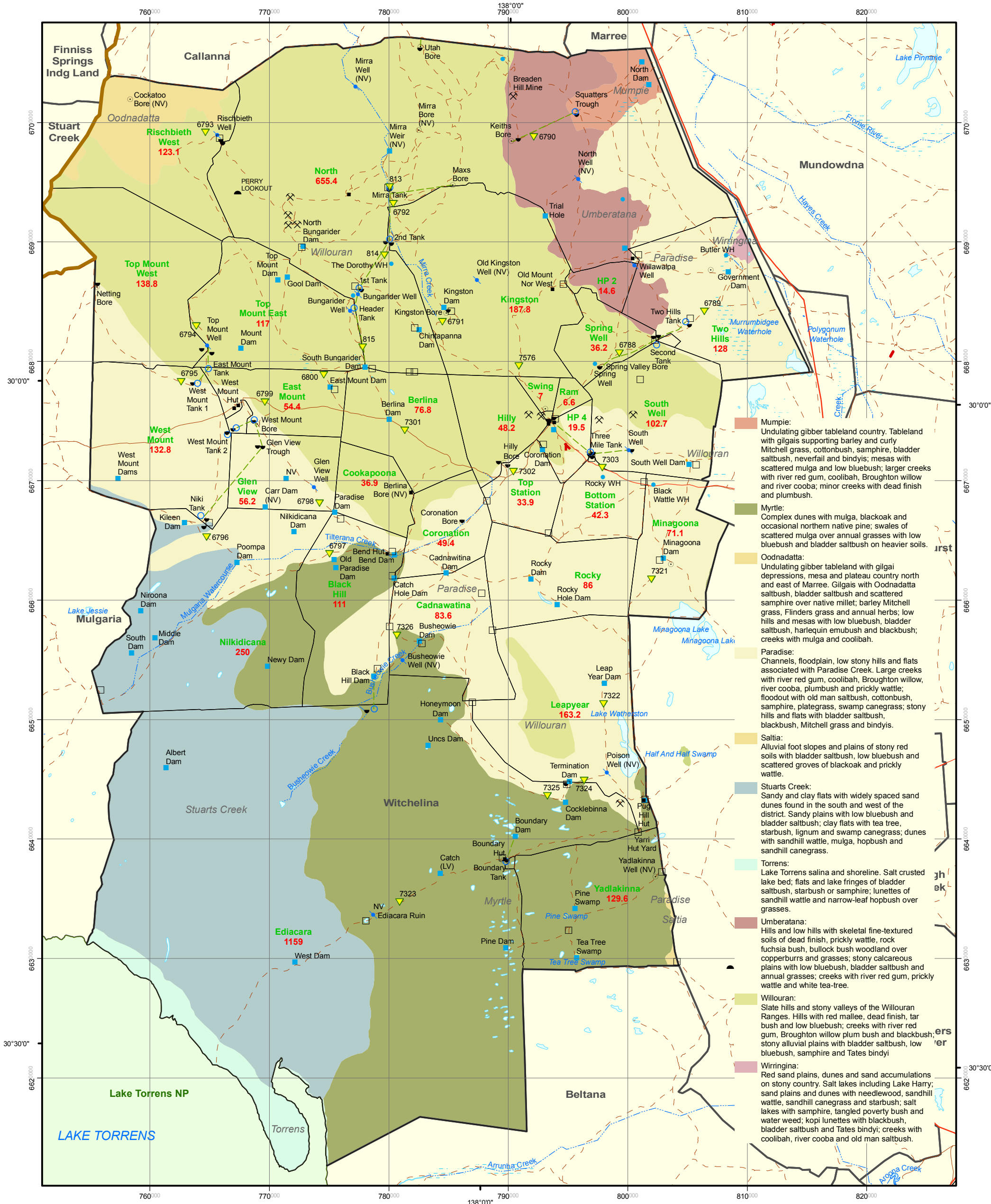


WITCHELINA

Station Area*: 4127 sq. km.



- Mumpie:** Undulating gibber tableland country. Tableland with gilgais supporting barley and curly Mitchell grass, cottonbush, samphire, bladder saltbush, neverfail and bindyis; mesas with scattered mulga and low bluebush; larger creeks with river red gum, coolibah, Broughton willow and river cooba; minor creeks with dead finish and plumbush.
- Myrtle:** Complex dunes with mulga, blackoak and occasional northern native pine; swales of scattered mulga over annual grasses with low bluebush and bladder saltbush on heavier soils.
- Oodnadatta:** Undulating gibber tableland with gilgai depressions, mesa and plateau country north and east of Marree. Gilgais with Oodnadatta saltbush, bladder saltbush and scattered samphire over native millet; barley Mitchell grass, Flinders grass and annual herbs; low hills and mesas with low bluebush, bladder saltbush, harlequin emubush and blackbush; creeks with mulga and coolibah.
- Paradise:** Channels, floodplain, low stony hills and flats associated with Paradise Creek. Large creeks with river red gum, coolibah, Broughton willow, river cooba, plumbush and prickly wattle; floodout with old man saltbush, cottonbush, samphire, plategrass, swamp canegrass; stony hills and flats with bladder saltbush, blackbush, Mitchell grass and bindyis.
- Saltila:** Alluvial foot slopes and plains of stony red soils with bladder saltbush, low bluebush and scattered groves of blackoak and prickly wattle.
- Stuarts Creek:** Sandy and clay flats with widely spaced sand dunes found in the south and west of the district. Sandy plains with low bluebush and bladder saltbush; clay flats with tea tree, starbush, lignum and swamp canegrass; dunes with sandhill wattle, mulga, hopbush and sandhill canegrass.
- Torrens:** Lake Torrens salina and shoreline. Salt crusted lake bed; flats and lake fringes of bladder saltbush, starbush or samphire; lunettes of sandhill wattle and narrow-leaf hopbush over grasses.
- Umberatana:** Hills and low hills with skeletal fine-textured soils of dead finish, prickly wattle, rock fuchsia bush, bullock bush woodland over copperburrs and grasses; stony calcareous plains with low bluebush, bladder saltbush and annual grasses; creeks with river red gum, prickly wattle and white tea-tree.
- Willouran:** Slate hills and stony valleys of the Willouran Ranges. Hills with red mallee, dead finish, tar bush and low bluebush; creeks with river red gum, Broughton willow plum bush and blackbush; stony alluvial plains with bladder saltbush, low bluebush, samphire and Bates bindyi.
- Wiringina:** Red sand plains, dunes and sand accumulations on stony country. Salt lakes including Lake Harry; sand plains and dunes with needlewood, sandhill wattle, sandhill canegrass and starbush; salt lakes with samphire, tangled poverty bush and water weed; kopi lunettes with blackbush, bladder saltbush and Bates bindyi; creeks with coolibah, river cooba and old man saltbush.

Data Source Topographic data: Geoscience Australia and SA Department for Environment and Heritage
Biological data: SA Department for Environment and Heritage

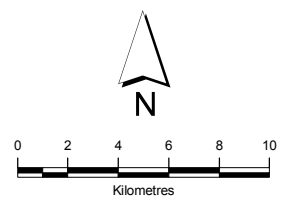
Produced By Resource Information Group
Department of Water, Land and Biodiversity Conservation

Projection Transverse Mercator, MGA Zone 53

Datum Geocentric Datum of Australia 1994

Date printed 24/03/2009 4:43:15 PM

- Pastoral Stations
- Conservation Parks
- PADDOCKS: NAME Area(sq. km.)
- Land Subject to Inundation
- Mainly Dry Lake
- Mainly Dry Watercourse
- Non-perennial Swamp
- Perennial Lake, Lagoon or Reservoir
- Waterhole, Pool or Billabong
- Fence
- Dog Fence
- Drain - Canal - Waterway
- Water Pipeline
- Landing Ground
- Levee Bank
- Pipeline - other than water
- Quarry
- Transmission Line
- Minor Road
- Principal Road or Highway
- Secondary Road
- Vehicular Track
- Railway
- Watercourse - mainly dry
- Spring or Waterhole
- Dam
- Bore
- Bore - Artesian
- Trough
- Tank
- Well
- Hill
- Building
- Mine
- Yard
- Photopoint
- Biol. Survey Veg. Sites



The purpose of this map is to show management areas based on fence lines. It is not intended to show the legal boundaries of pastoral leases. Fence lines are often significantly at variance with pastoral lease boundaries.

Infrastructure may be shown only for selected management areas.

*Station area is based on the boundaries shown and is not necessarily the same as area set out in pastoral lease documents.

© COPYRIGHT 2009
Department of Water, Land and Biodiversity Conservation. This work is Copyright. Apart from any use permitted under the Copyright Act 1968 (Cwth), no part may be reproduced by any process without prior written permission obtained from the Department of Water, Land and Biodiversity Conservation. Requests and enquiries concerning reproduction and rights should be directed to the Chief Executive, Department of Water, Land and Biodiversity Conservation, GPO Box 2834, Adelaide SA 5001.

The Department of Water, Land and Biodiversity Conservation, its employees and servants do not warrant or make any representation regarding the use, or results of use of the information contained herein as to its correctness, accuracy, currency or otherwise. The Department of Water, Land and Biodiversity Conservation, its employees and servants expressly disclaim all liability or responsibility to any person using the information or advice contained herein.