

SAVE PROTECT RESTORE

NATURE FOUNDATION SA

2013–2014
ANNUAL REPORT

OUR FOOTPRINT

Nature Foundation SA owns and directly manages five conservation properties, and has contributed to many conservation initiatives in South Australia







CONTENTS

2	PRESIDENT'S REPORT
4	STRATEGIC PLAN
5	CEO'S PERSPECTIVE
6	OUR LAND
8	MANAGING THE FLOW
10	NEW COMMITTEES/PROJECTS
11	LAND ACQUISITION
12	FUNDRAISING FOR OUR FUTURE
14	CASE STUDIES
16	WHY WE GIVE GRANTS
18	OUR PEOPLE
20	OUR AMBASSADORS
21	VALUING VOLUNTEERS
22	GOVERNANCE MATTERS
23	FINANCE, GOVERNANCE AND LEGAL
32	HONOUR ROLL

PHOTOGRAPHY

Alix Baltais
Hannah Bannister
Graham Chilman
Phil Cole
Paul Drummond
Leo Davis
Craig Ferber
Georgie Fiedler

Natasha Harper
Melissa Jensen
Anne Jensen
Dr Greg Johnston
Jamie Kohler
Patrick Mentzel
Marc Nell
Millie Nicholls
Andy Rasheed

Jem Shimmield
Amy Slender
Julie Schofield

CONTRIBUTORS

Bob Lott
Dr Bob Sharrad AM
NfSA staff

Nature Foundation SA
32 Holden St, Hindmarsh SA 5007
08 8340 2880
naturefoundationsa@nfsa.org.au

www.naturefoundation.org.au

THE BIG PICTURE

PRESIDENT'S REPORT



HELLO TO ALL OUR WONDERFUL NATURE FOUNDATION SA FRIENDS AND SUPPORTERS. THIS YEAR HAS BEEN AN EXTREMELY BUSY BUT VERY SUCCESSFUL YEAR. THE ANECDOTAL COMMENTS I AND COUNCILLORS ARE RECEIVING ARE VERY SUPPORTIVE OF THE BODY OF WORK UNDERTAKEN BY THE COUNCIL, ITS COMMITTEES AND STAFF.

Terrestrial activities

For much of our 33 years of existence the focus has been on terrestrial matters and this past year has been no exception.

The Land Acquisition Committee, chaired by **David Moyle**, negotiated with DEWNR and together we were able to fund the purchase of the very important south-east property at Francis which was gifted to the Nature Glenelg Trust a most impressive science-based conservation agency whose focus is concentrated on the south-east of SA and south-west of Victoria.

There has been some welcome movement of properties after a period of inactivity in the conservation land sales market and we sold another of our Blanchetown Bushland blocks (with a couple more sales imminent in the new financial year).

The Foundation has been the lead agency during this past year working to find a solution which will ensure that the site of the internationally significant Ediacaran Fossil Fields are protected in perpetuity. The owners of Nilpena Station have worked for many years to ensure that this National Heritage site continues to be protected. Since June

2013 NFSA has discussed the future of these areas with DEWNR, Beach Energy, senior SA Museum personnel and many others. Councillors and staff were treated to a presentation of the significance of the Ediacaran fauna by Dr Mary Droser whose research at the Nilpena site is funded, in part, by NASA.

The Property Management Committee has really come of age under the leadership of **Chris Reed**. The property infrastructure is simply brilliant and is already being used most successfully housing scientists and other interested parties and our small but burgeoning tourism initiatives. Again we held a very successful Grand Working Bee at Hiltaba, assisted with the Lizard Crawl day at Tiliqua, and the rotational managers are becoming more involved in the conservation activities the Foundation undertakes on our properties.

Water For Nature

The Foundation continues to be the only Not-for-Profit entity which has had a significant amount of Commonwealth environment water given to it. The challenge for us is finding the finances required to deliver this water to our half a dozen smallish projects and the large scale projects being negotiated by our **CEO Ian Atkinson**. **Greg Toop**, the chair of this committee, continues to develop relationships with important federal politicians to ensure that they are aware of our relationships with river communities and that we continue to play a leading role in assisting the Commonwealth Environmental Water Holder and his department successfully deliver the Government's concept of 'Localism' in the use of the environmental water flows in the Murray Darling Basin.

Post Graduate Project Funding

Unfortunately this third tranche of our major activities has been suffering from the very difficult financial circumstances the state is experiencing. We are not able to offer Post Graduate grants to the same level as in the past. We are nevertheless very impressed with the standard of applications and pleased that a number of applications relate to proposed research on our own properties. **Bob Sharrad** and his expert committee hope that the financial climate improves in the coming years

and they can award more grants than these last few years.

Improved Committee Structure

Beside the excellent work being done by **Susie Herzberg** and **Nic Edwards** in the Finance and Governance Committee in the matters of Governance as it relates to both Council and staff and in particular the workings of the Standing Committees, the Foundation has expanded to develop new initiatives.

After a shaky start developing relationships with major players in the Resource sector and being in danger of losing our pre-eminent position in the field attracting Third Party Offsets from a number of companies and the rank uncertainty which enveloped the industry with unsustainable cuts to the Native Vegetation Department staff numbers, the Foundation undertook the task of forming a powerful Significant Environmental Benefit (SEB) Committee and embarked on a sweep of activity to cement its place as the go-to entity for Resource Industry companies when considering their SEB commitments.

The Committee presented to the Native Vegetation Council (NVC), visited the main players in Department for Manufacturing, Innovation, Trade, Resources and Energy (DMITRE), and met with important stakeholders in the industry and has engaged outside expertise from an organization called Remarkable NRM. Its principal **John Gavin** and his colleague **Deb Agnew** have delivered superb input to the SEB Committee and the Committee commenced the process to employ an SEB Business Development Manager to further the initiatives the Committee has put in place.

Our new Councillor **Suzanne Ridding** with her expertise in the fields of Carbon Capture and Carbon Credits has quickly fashioned the Carbon Capture and Carbon Credits Working Group (the 4Cs). The Foundation now understands this important matter far better than previously and is working assiduously to positioning itself to benefit from the 'Carbon Industry' as Governments struggle to reach consensus with this issue which is so incredibly important to the future of our children and future generations.

In the coming year a Tourism Committee will be formed to develop this potential income stream in the future after initial forays into Tourism initiatives led by Councillor **Chris Reed** in late 2013 achieved minor but important successes.

Other Highlights

The Foundation approached **Mr. Reg Nelson** in June to ask him if he would consider becoming our third Patron. I am very proud to say that subsequently **Reg Nelson** advised the Foundation that he would accept its invitation. The unbelievable rise and rise of Beach Energy is largely due to **Reg Nelson** who assisted the Foundation to realise the potential of attracting Third Party Offsets to develop its work in improving Native Vegetation on a broad-acre scale.

It is a great thrill to see the growing band of specialist Volunteers (some of whom are very young – in their 40s and 50s) wishing to connect with the work that is being carried out on our properties. We are encouraging this interesting development and welcome their continuing interest in our work.

Hardly a positive, but nevertheless a highlight of sorts, is the slashing of support for almost any conservation programmes by the Federal Government and the fact that the State Government is all but paralysed because of its financial position. These factors present a major problem for not only your Foundation but the conservation movement as a whole.

Thankyou

There are so many who need recognition for their support during the year – space does not allow the option to name all of these wonderful people, but the list includes the following:-

Allan Holmes and the staff of DEWNR, all of our wonderful selfless Members, Supporters and Donors without whom the Foundation would be so much the poorer: **John Sibly** and the Friends of Nature Foundation SA, our amazing, inventive Witchelina Property Managers and Hiltaba Caretakers, the Mt Lofty Rangers 4WD Club, the Sporting Shooters Conservation Branch and the Marree Hotel.

The CEO and his staff do incredible work for the Foundation and we appreciate every effort they make to help it grow. Their combined expertise is recognised throughout Australia prompting many in the industry to comment that Nature Foundation SA is one of the most effective Conservation groups in the country and many marvel at the quality and quantity of the output of our staff.

Our Committee structure relies heavily on the input of its Non-Councillor members, we thank them all and, of course, the powerful Committee structure is so successful because of the commitment of the Council member Chairs of those committees. As I often comment, this Foundation would achieve only 50-60% of what it achieves if it was not for the 'Working Councillors' it is so lucky to have.

I personally pay tribute to the efforts of your Foundation's magnificent Council – thank you Councillors and congratulations on your successful 2013/2014.



Bob Lott
President

AT A GLANCE HIGHLIGHTS OF 2013-2014

26

Research projects and research scholarships granted a total of \$75,925

182

Megalitres of environmental water delivered in 13-14

35%

Increase in Appeal funding to previous year

105

Volunteers helped with Grand Working Bees at Witchelina and Hiltaba

388

Walkers in the Walk for Nature event

100%

Of participants of the Witchelina and Hiltaba Grand Working Bee said that their expectations were met

200

Plasticine models of Pygmy Blue-tongue Lizards were made at the Tiliqua Lizard Crawl for bird predation research

STRATEGIC PLAN

MARCH 2014 – JUNE 2016

The Vision

To play a significant role in nature conservation as South Australia's pre-eminent nature charity.

Mission

To be an apolitical, not-for-profit, nature charity which works with, and inspires others to conserve, restore and sustainably manage South Australia's wildlife and sites of natural and cultural significance.

Objectives

1. To raise funds for nature conservation through voluntary contributions and beneficial partnerships with both the private and public sectors;
2. To enable the long term protection of high conservation value land and improve biodiversity values of degraded land;
3. To initiate and support projects and research which assist the conservation of nature and the natural resources of South Australia;
4. To raise awareness about the needs of the natural environment in South Australia;
5. To manage the Foundation efficiently as a respected, well supported South Australian organisation.

Background to this Strategic Plan

This plan presents the priorities, strategies and actions for the NFSA for the next 2 years. It has been prepared taking into account the not-for-profit status of the Foundation and the aspirations of the Foundation's Council comprising Foundation members. It is designed to be simple and to be used as a ready reference to guide the Council and to inform members and the general public about the Foundation and the nature of its business.

Objective 1

To raise funds for nature conservation through voluntary contributions and beneficial partnerships with the private, public and NGO sectors.

Target

- 1.1 Increase by 20% per annum funds from donations, and events for the general operations of NFSA;
- 1.2 Increase by 20% per annum funds from grants and corporate sponsorships;
- 1.3 Increase funding from Government grants;
- 1.4 Increase by 10% annually the number of members / donors;
- 1.5 Increase by 10% the value of Bequest and Major Gift contributions;
- 1.6 Increase the value of SEB funds applied to NFSA properties and projects;
- 1.7 Develop New Income sources.

Objective 2

To enable the protection of high conservation value land and improve biodiversity values of degraded land.

Target

- 2.1 Turn over at least 2 BushbankSA properties (per year) with a positive financial result and provide for the conservation of at least 200 ha per annum under Nature Foundation SA Heritage Agreements;

- 2.2 Develop and deliver against a new BushbankSA Agreement;
- 2.3 Acquire new land of significant conservation value for its long term protection;
- 2.4 Support Para Woodlands project to implement long term management plan;
- 2.5 Develop and Implement Management Plans for main NFSA owned properties (Witchelina, Hiltaba, Tiliqua, Watchalunga);
- 2.6 Implement a Water For Nature programme to deliver environmental watering for the benefit of nature conservation along the River Murray.

Objective 3

To initiate and support projects and research which assist the conservation of nature and the natural resources of South Australia.

Target

- 3.1 Provide an effective grant programme for research and conservation projects;
- 3.2 Promote research projects to support conservation on Nature Foundation SA properties;
- 3.3 Increase dissemination of findings of research projects.

Objective 4

To raise awareness about the needs of the natural environment in South Australia.

Target

- 4.1 Inform members, donors, and sponsors about NFSA's activities and fundraising initiatives;
- 4.2 Promote the work of NFSA to the general community and interested allied groups;
- 4.3 Optimise the use of electronic media to promote the work of NFSA;
- 4.4 Maintain an active dialogue with political decision makers;
- 4.5 Articulate the NFSA position on our principles of environmental conservation;
- 4.6 Manage volunteer involvement to best support the work of NFSA;
- 4.7 Develop a media contact strategy to promote the work of the Foundation.

Objective 5

To manage the Foundation efficiently as a respected, well supported South Australian organisation.

Target

- 5.1 Meet or exceed Key Performance Indicators annually;
- 5.2 Inform stakeholders at least annually about how funds given to NFSA are delivering conservation outcomes;
- 5.3 Manage investment funds to achieve maximum returns consistent with sound governance;
- 5.4 Promote, support and use sound science to identify, manage and protect land of high conservation value;
- 5.5 Ensure continuing efficient management, governance and financial accountability of NFSA.

WE MEAN BUSINESS

CHIEF EXECUTIVE OFFICER'S PERSPECTIVE



HELLO EVERYONE AND WELCOME TO OUR REPORT ON THE YEAR THAT WAS 2013-14.

From my perspective it was a successful but challenging year. Our successes have included; assisting in the purchase of Eaglehawk Waterhole (near Francis in the south-east) as a conservation reserve, formation of a new committee to assist our Significant Environmental Benefits programme, submission of the Hiltaba Management Plan to the Commonwealth, our Grand Working Bees (big and small) and tripling the size of our Water For Nature programme.

Progress towards the objectives of our Conservation Plans at Witchelina and Hiltaba is steady. The work of our Witchelina Resident Managers and Hiltaba Caretakers is progressively shifting to be more conservation centric as we bring the infrastructure and maintenance under control. Likewise the efforts of our volunteers working on the properties are also shifting and everyone who attended the Witchelina and Hiltaba Grand Working Bees spoke highly of the mix of activities on offer. As well as the big Grand Working Bees we have also had several smaller working bees including a couple of Water For Nature days.

The staff here at NFSA Hindmarsh, and in the regions, have had a great year delivering on a wide range of activities and keeping your organisation operating effectively. In this they have been ably supported by volunteers at many levels, from Council through Committees to working bees. During the year we also had two key changes in staff. Firstly we welcomed Craig Ferber as Regional Manager for Water For Nature based in Loxton. Craig is the

Project Officer for the Local Action Planning (LAP) Committee and we contracted the LAP group for three days a week of his time in 2013-14 thanks to a grant from the John T Reid Charitable Trusts. Hiyoba Ghirmay finished up her two year contract with us early in 2014 and we have missed her happy face since.

The challenges continue to be primarily about resources as we have more great ideas than people or cash to deliver them. Our operating environment also got a lot tougher with cuts in both State and Commonwealth Government funding programmes. In particular the loss of Biodiversity Grant funding in the Commonwealth arena will impact on not just our ability to do needed work but is affecting the whole conservation sector. Our pursuit of grant funding from private philanthropic organisations has improved but unfortunately other fundraising activities, including Walk for Nature, did not meet expectations.

Water For Nature grew significantly during the year thanks to grants from Mullum Trust, Australian Communities Foundation, The Myer Foundation, John T Reid Charitable Trusts, West End Community Fund, James N Kirby Foundation and the Commonwealth Environmental Water Office. This allowed us to expand from just two sites to six and undertake the preparatory work for more.

Whilst talking about fundraising, I must mention the very educational trip I made to the USA to attend the 'Association of Fundraising Professionals Annual Conference'. The trip was funded by the Perpetual Foundation who wanted to see how the experience would assist Australian charities' professional fundraising efforts. I was one of a dozen Australian charity CEOs who attended the conference and site visits organised through Dr Wendy Scaife, Acting Director of the Australian Centre for Philanthropy and Nonprofit Studies, at QUT Business School in Brisbane. The trip was a great introduction to the profession of fundraising for me and the knowledge gained has already been useful here. I hope we can do more to ensure your organisation is a continuing success.

One of the most important tasks done in conjunction with NFSA Council this year was the development of an amended Strategic Plan

for 2014-2016. The Strategic Plan (summarised on the page opposite) is a guide to Committees and staff alike about what Council sees as important. It will also provide us with guidance on the difficult balance to be struck between our competing aims and objectives over the next few years.

As we learn more about our properties, and areas we operate in we also come across new challenges. Major emerging challenges include; Buffel grass management at Witchelina, Fire management at Hiltaba, and long term outcomes monitoring at Water For Nature sites. Part of the answer in meeting these challenges is going to be recruiting and managing more skilled volunteers.

An important step taken this year was the implementation of better Workplace, Health and Safety (WHS) systems and training. With changes to the legislative framework and expectations around WHS this is of paramount importance. But even if it wasn't a legal requirement there is an obvious moral and even 'common-sense' imperative to managing the risks to our staff and volunteers.

Another way we can meet future conservation challenges is through relevant research on key issues. In my opinion the Council's decision to require more of our scarce research dollars to be spent on topics relevant to our properties is both prudent and a key outcome of the past decision to get into the business of land management for conservation. I have enjoyed seeing the larger research programs (Thick-billed Grasswrens, Seedbank, and Pygmy Blue-tongue Lizard) deliver both good science and outcomes which aid our long term conservation goals.

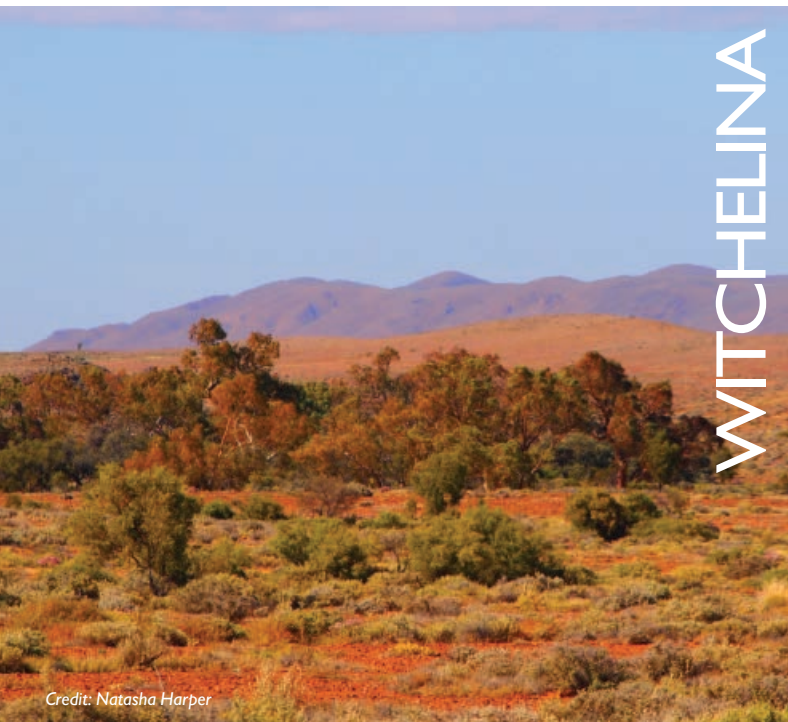
I hope you enjoy reading this report and I look forward to speaking with many of you about our continued great work on your behalf.

A handwritten signature in dark ink, appearing to read 'Ian Atkinson', written over a light blue horizontal line.

Ian Atkinson
Chief Executive Officer

OUR LAND

PROPERTY MANAGEMENT COMMITTEE



Credit: Natasha Harper

NFSA's Rotational Managers are implementing the Property Management Plan priority actions of reducing total grazing pressure from goats, rabbits and other herbivores and predation pressure from feral cats, foxes and wild dogs through ground and aerial baiting and shooting. In April 3000 baits (1080) were distributed, primarily targeting wild dogs as part of the SA Arid Lands Natural Resources Management Board's Biteback program. Over Easter the Mount Lofty Rangers 4WD Club undertook an audit of our southern boundary fence over three days and two nights. They also secured and rebuilt a very dilapidated mining shed in the north of the property. Continuing work by our managers and volunteers on upgrades of our many buildings allows us to accommodate up to 40 people. Our power reticulation system has also been upgraded to comply with current regulations by John Ovenden at Atlas Electrical. In October NFSA began an ongoing cultural survey project with one of the groups of traditional owners at **Witchelina**, the Adnyamathanha, so that sites of cultural significance can be properly managed into the future. The Witchelina Grand Working Bee in August 2013 saw 70 participants assisting with vital conservation work and NFSA commenced an Ecotourism trial at Witchelina with 'Tag Along' tours commencing in June 2014.

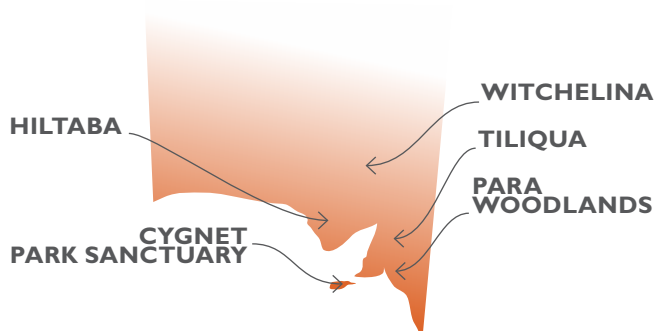


Credit: Natasha Harper

Conservation management at **Hiltaba** has been gaining momentum under the watch of our caretakers, with reducing total grazing pressure and predation pressure the highest priorities. With support from the DEWNR's Bounceback program almost 12593 fox baits (1080) and 600 aerial and ground wild dog baits were distributed over the property. This intensive baiting effort has been undertaken to reduce predation pressure on the struggling Yellow-footed Rock-wallaby population at Mt Friday. A new off grid power system has been installed providing safe and reliable power to all of the homestead buildings. The Hiltaba Grand Working Bee in May 2014 saw 35 volunteers involved in conservation projects such as wombat warren mapping helping to establish distribution and abundance of warrens on the property. Two Walking Trails named in honor of Betty and Bob Lewis and Warren Bonython AO have been mapped out and a vehicle containment fence at Pretty Point constructed. Planned opening of this tourism initiative is scheduled for April 2015. Upgrades of the Shearers Quarters and the last unrenovated cottage were also commenced during the working bee.

PROPERTY MANAGEMENT COMMITTEE

Chris Reed (Chair), Bob Lott,
David Moyle AM, Dr Bob Sharrad AM,
Brenton Arnold, Dr Travis How,
Kaz Herbst





TILIQUA

Tiliqua Nature Reserve has the largest known colony of endangered Pygmy Blue-tongue Lizards (*Tiliqua adelaidensis*) and has seen the completion of the second spring/summer field season of a five year research project. The research goals are to prepare a set of simplified methodologies for monitoring Pygmy Blue-tongue Lizard populations; to refine specific management recommendations for the lizards; and to increase the involvement of local communities. Project partners include Flinders University, SA Museum, Zoos SA, Department of Environment, Water and Natural Resources, Northern & Yorke Natural Resources Management Board and the SA Murray-Darling Basin Natural Resources Management Board.

Credit: Patrick Mentzel



PARA WOODLANDS

Para Woodlands is a 500 ha long-term restoration project on land jointly owned by Nature Foundation SA and the Department of Environment, Water and Natural Resources (DEWNR). Mrs Elizabeth Law-Smith and her late husband David made a generous gift of land to the Foundation and provision to help to re-establish the critically endangered Peppermint Box grassy woodland - a valuable habitat for threatened woodland birds. The Para Woodlands Planting Day in June 2014 saw native lilies, grasses and trees planted with the goal of reconstructing habitats using both a 'top down' (start with the canopy) and 'bottom-up' (start with the ground cover) approach. Thanks to the dedicated DEWNR staff who coordinated the planting day, and other work throughout the year.

Credit: Patrick Mentzel



CYGNET PARK SANCTUARY

Cygnnet Park Sanctuary on Kangaroo Island offers increased habitat and biodiversity for native threatened species and plant communities. NFSA is one-third owners of this property and it has seen successful use of innovative restoration technologies. NFSA is a project partner in the Kangaroo Island Planting Festival organised by DEWNR. The July 2013 planting resulted in close to 57,000 seedlings planted over 25 hectares. DEWNR Threatened Plant Project staff collected and germinated all the seeds and propagated all the plants used at the Planting Festival.

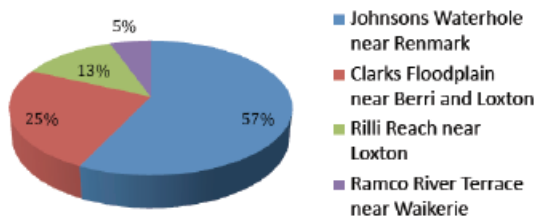
Credit: Georgie Fiedler

MANAGING THE FLOW

WATER FOR NATURE COMMITTEE

During 2013-14 Water For Nature (WFN) was successful in delivering environmental water to four priority sites (refer below). We also completed works for watering Loxton Riverfront Reserve, and Thieles Flat, but decided not to water because there had been good rainfall over autumn. Thanks to the many volunteers, landowners, and partners who have contributed to this programme as without your efforts we would not be able to achieve a quarter of the outcomes.

182 ML of environmental water applied over four sites 2013-14



We are indebted to the Commonwealth Environmental Water Office for provision of the 182 ML of water we used and their continued cash support for delivery costs like diesel and electricity. The Foundation received a number of grants for our Water For Nature programme including; Mullum Trust, Australian Communities Foundation, The Myer Foundation, John T Reid Charitable Trusts, West End Community Fund and the James N Kirby Foundation. These grants helped to provide equipment, support the Water For Nature Riverland Coordinator's salary and his operating costs. Generous in-kind support was received from SA Water, SMEC Foundation, Liquid Associated Mechanical Services (LAMS) and Jacobs (formerly SKM) in the form of professional services and loan of equipment.



Survival of Black Box seedlings (that arose from the 2011 and 2012 flooding events in the region) continues to be a particular focus of Water For Nature. To measure success we use transects for monitoring and the results (graph top right) are for areas we have watered at

WATER FOR NATURE COMMITTEE

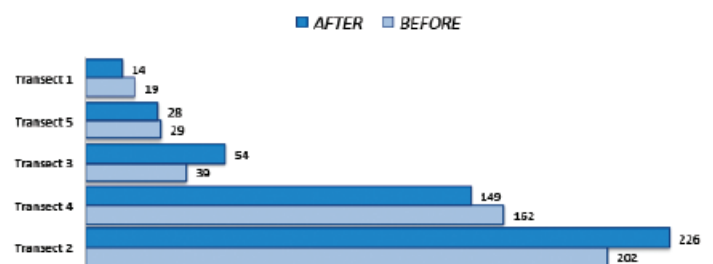
Greg Toop (Chair), Bob Lott, David Moyle AM, Phil Cole, Dr Anne Jensen, Steve Clark, Peter Forward, Dan Mollison, Andrew Beal

WATER FOR NATURE TECHNICAL ADVISORY GROUP (TAG)

Professor Mike Young, Deb Nias, Mark Siebentritt, Keith Walker

Clarks Floodplain. As you can see in some instances seedling numbers have gone up, either because new seedlings have grown, or more likely seedlings that were hard to see initially are now much easier to spot because they have grown into healthy specimens.

Seedling counts before and after watering



We also believe that we have been successful in causing the germination of new seedlings which is wonderful news. It can't be proven conclusively, however the photo (opposite page top right) shows young seedlings on the edge of a shallow flood-runner we watered in 2013 at Clarks Floodplain when it was just bare ground.

Whilst most of the sites are principally about watering the floodplains, Johnsons Waterhole near Renmark is a significant site for water birds and frogs. The picture (opposite page - middle) shows this 4 ha waterhole brimming with water and attracting birds not long after it was filled.

To quote from the monitoring report, "A range of species from different functional [water bird] groups have been represented at the site including a few species of conservation significance. This indicates that a range of habitat and food types are present at the site."

Young black box seedlings at Clarks Floodplain



Refilling Johnsons Waterhole in March 2014
Credit: Craig Ferber



Johnsons Waterhole brimming with water



Volunteers laying out irrigation at Rilli Reach
Credit: Phil Cole

NEW COMMITTEES/ PROJECTS

SIGNIFICANT ENVIRONMENTAL BENEFIT DEVELOPMENT COMMITTEE

Bob Lott (Chair), David Moyle AM, Chris Reed and John Gavin (or proxy Deb Agnew)

THIS COMMITTEE, TASKED WITH EXPANDING OUR NATURE CONSERVATION WORK THROUGH SIGNIFICANT ENVIRONMENTAL BENEFIT OFFSETS, HELD ITS INAUGURAL MEETING IN JANUARY 2014.

Work to the end of financial year included establishing the Terms of Reference for the committee and development of strategies to grow relationships with the state government agencies (primarily DEWNR and PIRSA) and resource sector peak body (SACOME), grow relationship with existing SEB supporters and grow connections with potential SEB supporters.

The legislation underpinning SEBs has undergone changes. *The South Australian Native Vegetation (Miscellaneous establishment) Amendment Act 2013*, to amend the *Native Vegetation Act 1991*, was assented to in December 2013. The subsections related to the Third Party Significant Environmental Benefit Offsets Scheme will come into operation following development of associated documents- policy, regulations and a public register. The amendments will introduce a system of SEB credits; it will be possible to have an area of native vegetation that is considered to be of significant value, approved as a credit for later use as a Third Party Offset.

During this reporting period Nature Foundation SA presented to the Native Vegetation Council regarding having Hiltaba Nature Reserve approved as a Third Party Offset recipient.

The Committee commenced the process to engage a Business Development Manager to continue the relationship building with those members of the Resource Sector which have directed their Third Party Offsets to the Foundation.

CARBON CAPTURE AND CARBON CREDITS WORKING GROUP

Suzanne Ridding (Chair), Bob Lott, David Moyle AM, Nicholas Newland AM, Dr Tim Moore, John Gavin

THIS WORKING GROUP, TASKED WITH THE JOB OF EXPLORING CARBON SEQUESTRATION OPPORTUNITIES THAT PROVIDE BENEFITS TO THE ONGOING CONSERVATION WORK OF THE FOUNDATION, HELD ITS INAUGURAL MEETING IN MARCH 2014.

The Carbon Capture and Carbon Credits Working Group is looking at NFSA's role in conserving carbon value in biomass and its contribution to SA's biological resources and opportunities for income generation resulting from NFSA's land and native vegetation assets, while continuing to achieve conservation outcomes.

Work to the end of financial year included the development of Terms of Reference to guide the group's future work, establishing an action plan and scoping the feasibility of implementing a number of strategies that would allow Nature Foundation SA to become engaged with, and potentially enter, the carbon market place.

Priority actions have included identifying potential alliances, understanding the Carbon Farming Initiative and also legislative requirements and exploring pilot projects. Priorities in the next financial year include Nature Foundation SA assessing carbon value and measuring the bio-sequestration potential of its properties.

ECOTOURISM

THE NATURE FOUNDATION SA COUNCIL ENDORSED AN ECOTOURISM TRIAL AT WITCHELINA NATURE RESERVE. THIS ECOTOURISM PRODUCT IS BEING DEVELOPED THROUGH A WORKING GROUP LED BY COUNCIL MEMBER CHRIS REED.

Building on the existing Witchelina 4WD package, a new 'Tag Along' tour led by Rotational Managers at Witchelina was trialled commencing June 2014. NFSA is also trialling camping sites and accommodation in the refurbished Shearers Quarters and Managers residence at Witchelina.

Conservation will always be our first priority however there is scope to open up these properties to a niche ecotourism market within guidelines that will manage the impact of visitation. We believe people are able to gain a far deeper and more profound insight into our work if they can experience it first-hand. Eco-tourism and conservation can work to a common goal – to protect these magnificent landscapes and the flora and fauna therein.

LAND ACQUISITION

LAND ACQUISITION COMMITTEE

THE LAND ACQUISITION COMMITTEE IS RESPONSIBLE FOR MANAGEMENT OVERSIGHT OF OUR NFSA BUSHBANKSA PROGRAMME, THE FEASIBILITY ASSESSMENT OF NEW PROPERTY ACQUISITIONS AND PROJECTS, AND ASSISTING IN DEVELOPING THIRD PARTY SIGNIFICANT ENVIRONMENTAL BENEFITS (SEBs) WHICH PROVIDE FOR THE ON-GROUND RESTORATION OF NATIVE VEGETATION.

Four key areas were looked at as part of the conservation values alignment; funding sources for purchase and management, NFSA principles and objectives relating to conservation significance, and income, cost and complexity were assessed and ranked in order of importance.

As at the end of the 2012-13 financial, the Foundation entered into a contract to purchase land at Finnis River comprising a large section of Fleurieu Peninsula Swamp, listed as a critically endangered ecological community. Work

continued during the 2013-14 financial year to complete a subdivision that would allow the Foundation to purchase only the swampland. It is likely that this transaction will be completed during the 2014-15 year. The Foundation also assisted DEWNR in the purchase of Eaglehawk Waterhole (near Francis in the south-east) an important assembly of ecological communities in the region.

Nature Foundation SA has worked with the resource sector to direct Significant Environmental Benefit offsets to the acquisition of land, the most significant example being five resource companies contributing close to 20% of the purchase cost of Witchelina Nature Reserve in 2010. This committee will continue to provide expert advice regarding land with high conservation value that may be suitable for future acquisition through our partnerships with SEB supporters.

BushbankSA is a revolving fund that buys, protects and then on-sells areas of significant vegetation. Land parcels are carefully selected

and given Heritage Agreements before they go to their new owners. Net proceeds are returned to the BushbankSA account to fund further purchases.

BushbankSA has purchased 14 properties, created 29 new lots with unique titles and revolved 19 of these lots since its inception. In the 2013-14 financial year the program sold one lot at the Blanchetown Bushland Estate and currently has two further properties under contract. There are still seven lots remaining in the estate and we are looking for new owners who are enthusiastic about conservation. During the financial year the committee reviewed nine prospective properties on the market although none met enough of the acquisition criteria to proceed to purchase.

LAND ACQUISITION COMMITTEE

David Moyle AM (Chair), Bob Lott, Greg Toop, Dr Bob Inns, Dr Kym Nicolson (up to May 2014), Bob Laws, Brenton Grear

FUNDRAISING FOR OUR FUTURE

FUNDRAISING, MARKETING & EVENTS COMMITTEE

Bob Lott (Chair), Dr Rob Morrison OAM,
Dr Barbara Hardy AO, Nicholas Newland AM,
Megan Rusk

FUNDRAISING, MARKETING & EVENTS COMMITTEE

THE FUNDRAISING, MARKETING & EVENTS (FME) COMMITTEE HAS PLACED AN INCREASED EMPHASIS ON STRATEGIES TO SUSTAIN AND GROW THE FUNDRAISING THAT IS SO CRITICAL TO SUPPORTING THE FOUNDATION, NOW AND INTO THE FUTURE.

The Foundation has received funding from Members and General Supporters, Corporates, Government and Private Ancillary Funds (Philanthropic Organisations). The Foundation is grateful for the financial assistance received and values the support individuals, organisations and partnerships that help deliver our three main areas of activity; Land Acquisition, Research and Water For Nature.

The Corporate sector has been very kind to the Foundation with the continuation of sponsorship from Beach Energy and generous support from the CMV Foundation, and the Macquarie Group.

The Foundation received a number of grants for our Water For Nature programme including; Mullum Trust, Australian Communities Foundation, The Myer Foundation, John T Reid Charitable Trusts, West End Community Fund, and James N Kirby Foundation. These grants helped to provide equipment, the Water For Nature Riverland Coordinator's salary and contribute to operational costs. Generous in-kind support was received from SA Water, SMEC Foundation and Jacobs Knight Merz in the form

of professional services and loan of equipment. We recognise the continued support from the State Government through the Department of Water, Environment and Natural Resources, Adelaide & Mount Lofty Ranges NRM, Northern & Yorke NRM and the SA Murray-Darling Basin NRM.

Direct sponsorship has helped control feral herbivores, costs associated with the Tiliqua Lizard Crawl & Walk for Nature and the Foundation also received a management subsidy grant. Harcourts Foundation generously provided funds for our Grand Working Bee at Hiltaba Nature Reserve, The Perpetual Foundation provided funding for our CEO to travel to the US and attend the Association of Fundraising Professionals conference, and Biodiversity Protection WA provided funding for Hiltaba Nature Reserve.

This year we coordinated Fundraising Appeals to support New Research Directions for Nature Foundation SA, Hiltaba Healthy Populations and Vital Works. Revenue rose by over 35% from the previous year, continuing a positive trend.

Walk for Nature in October had 388 enthusiastic walkers taking part in our 3km, 6km or 12km walks along the Heysen Trail. Despite 16 generous sponsors who contributed funds or in-kind products or services, the event only broke even after expenses. Consequently we have decided not to run the event in 2014.

Our Christmas Dinner at the Adelaide Zoo saw 110 people enjoy a twilight guided walk through the zoo and a delicious three course meal with live music. There were 21 sponsors who generously donated towards the evening, and the dinner generated over \$10,000 for the Foundation.

The Foundation continued to use broad communication channels to reach a mix of audiences including tools such as: Newsletter, Fact Sheets, Website and Social Media including Facebook (736 likes as at 30 June), Twitter & YouTube. We worked to spread our story in innovative and cost-effective ways with digital platforms, such as Facebook, utilised with a 'call to action' for supporters to pass the message on. We also endeavoured to enlist media coverage as another method of gaining good public relations and raise our profile.

Nature Foundation SA's membership was 457 people which, despite a vigorous membership drive, was a 6% decrease on the previous year. We will continue to strive to grow membership but know that we have a great number of supporters who don't opt to become members but rather support through volunteering, donations and bequests.

The Foundation continues to 'punch above its weight' and we recognise and appreciate the individuals and organisations that support our endeavours. We've got another big year planned - stay tuned ...



Tiliqua Lizard Crawl - September 2013
Credit: Patrick Mentzel



Christmas Dinner – guests enjoyed a private tour of the zoo
Credit: Leo Davis



Walk for Nature October 2013
Credit: Graham Chilman



Second from top: Alex Nankivell (Conservation Programs Manager) with a Inland Dotterel (*Charadrius australis*) chick at the property recce at Witchelina Grand Working Bee - August 2013
Above: Group shot - Witchelina Grand Working Bee. Credit: Andy Rasheed



Second from top: Group shot Hiltaba Grand Working Bee May 2014
Third from top: Dr Greg Johnston provides an information session at Hiltaba Grand Working Bee
Above: Refurbishment of Shearers Quarters - Hiltaba Grand Working Bee May 2014

CASE STUDIES

KEY CONSERVATION ACHIEVEMENTS

GOAT BROWSE ASSESSMENT



Gawler Ranges Grevillea. Credit: Greg Johnston

DR GREG JOHNSTON – NFSA
CONSERVATION ECOLOGIST*

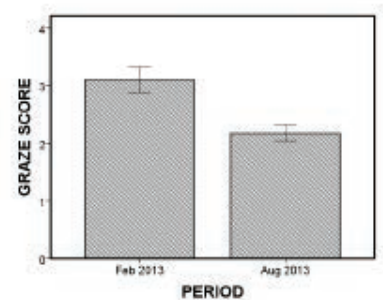
*THIS POSITION IS SPONSORED BY BEACH ENERGY

Wild and domestic herbivores have a huge range of effects on native vegetation. Some of these effects can be positive, such as providing nutrients in the form of faeces. Some can be

negative, such as the destruction of plants when they are eaten. Removal of domestic sheep and cattle, and feral goats are an important part of managing the Foundation's reserves for conservation.

A combined total of over 11,000 feral goats have been removed from Hiltaba and Witchelina since the Foundation took ownership of the properties. While this in itself is a measure of success, it raises a question: How can one assess the impact of removing these goats on native vegetation? Scientists from the Department of Environment, Water and Natural Resources (DEWNR) and Nature Foundation SA have been collaborating to develop a method to measure the impact of herbivores on vegetation. The method we have developed utilises calculation of a 'report card' that allows spatial comparisons of herbivore damage across the landscape, and temporal comparisons through time. The method also takes into account assessment of damage done by different herbivores, and is designed for use in Australian conditions. Application of the method on Hiltaba has shown that goats are the major source of

vegetation damage on the hills, which are home to several endangered and endemic plants. Furthermore, the reduction in goat numbers on Hiltaba has seen a reduction in goat browse damage to the endemic Gawler Ranges Grevillea. This is extremely good news because Hiltaba is the only reserve that contains this species of plant. Doing the right thing on Hiltaba is critical to this species' survival.



Results from goat browse assessment in February and August 2013 show that browse damage (graze score) to the endemic Gawler Ranges Grevillea has reduced in response to removal of goats from the reserve during that period.

BRINGING THEM BACK



RESEARCHER: MELISSA JENSEN (PHD
CANDIDATE) – UNIVERSITY OF
ADELAIDE. RESEARCH FUNDED BY NFSA

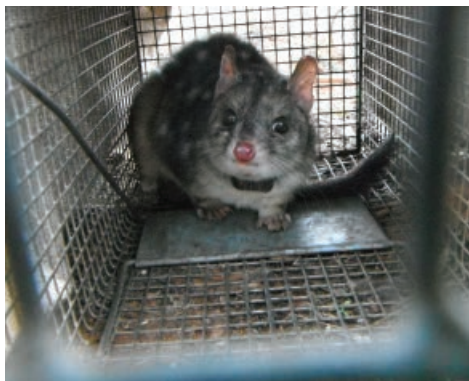
Research project: Reintroduction of the Ildya to the Flinders Ranges National Park – Does temperament play a role in reintroduction success?

The Western Quoll (*Dasyurus geoffroii*), also known as the Ildya to the local Adnyamathanha people of the northern Flinders Ranges, is a medium sized marsupial carnivore which once ranged across 70% of mainland Australia, but is now only found in south-west Western Australia. Following the success of several translocations of this vulnerable species in Western Australia, DEWNR, in collaboration with the Foundation for Australia's Most Endangered Species (FAME), trialled the first reintroduction of Ildya back into South Australia. Forty-one animals fitted with radio tracking collars were released into the Flinders Ranges National Park in April 2014 and as of 30 June, nine had perished primarily due to predation from feral cats. There is optimism for their

survival though, with the hope that the positive ecosystem changes resulting from the Bounceback program in the area will assist the reintroduction of this locally extinct species. Melissa's research, which commenced in 2013 and will conclude in 2016, aims to identify factors that contribute to reintroduction success, focusing investigation on: den site availability versus use within different habitats, whether soft-release improves survivorship and reduces dispersal in reintroduced quolls, and whether temperament traits predict post-release survival.

The temperament research videoed the behaviour of quolls in response to stimuli placed within their enclosures whilst in captivity prior to release. Research methodology included the use of a novel object (ball), giving up density, predator scent and mirror. Temperament traits exhibited by the quolls included: timid, naïve, inquisitive, bold, and aggressive.

This aspect of the research will look at direct links between temperament and fitness and whether there is higher survival in certain temperament types.



Top: Western Quoll 'bold' temperament display with novel object. Credit: Melissa Jensen (with thanks to WA Department of Parks and Wildlife)
Above: Cage-trapped female western quoll during routine monitoring. Credit: Jamie Kohler

A BIRD IN THE HAND...



Amy Slender and Marina Louter holding an adult male TBGW.
Credit: Marc Nell



TBGW family – left to right: juvenile, male and female.
Credit: Amy Slender

RESEARCHERS: AMY LEE SLENDER AND MARINA LOUTER (PHD CANDIDATES), FLINDERS UNIVERSITY
ARRIUM MINING SEB FUNDED RESEARCH

Research project: Biodiversity offset strategy for impacts to the Thick-billed Grasswren (eastern subspecies *Amytornis Textilis Modestus*).

This research, conducted at Witchelina, is investigating the effects of habitat quality and individual quality on nesting success and dispersal in the threatened Thick-billed Grasswren (TBGW), a highly cryptic and elusive bird species. Understanding the ecological factors that determine the distribution and reproductive success in a threatened species is essential to providing scientifically informed conservation

management. To identify morphological and genetic differences between different TBGW populations the researchers sampled across two populations: subspecies *A.m. raglessi* (Witchelina population – east of Lake Torrens) and subspecies *A.m. indulkanna* (population west of Lake Torrens). They found morphological differences between the two populations; the Witchelina birds were smaller in body size and had a narrower but thicker bill than the birds that occur west of Lake Torrens. The difference in morphology might be caused by reduced exchange of genetic information between the two populations (gene flow), which could lead to population differentiation – genetic analysis is planned for late 2014. Bird surveys across more than 250 plots found that TBGW were more likely to be absent from

sites that had heavy grazing impacts. Feeding observations revealed cooperative breeding in this species, which was suspected but not backed by evidence. Research also revealed that the TBGW are highly specialized in their nest-building behaviour: 80% of all TBGW nests (134 of 168) were located in Blackbush (*Maireana pyramidata*). Amy Slender said “Catching a Thick-billed Grasswren adds a new level of complexity to studying a bird that is already difficult to see... you need a sense of instinct to calculate where they are going to go and how they are going to respond to you.” Marina Louter concurred saying: “This is, without a doubt, the most difficult bird species I have ever worked with. Yet, despite its elusive nature, we managed to find and capture a total of 164 Thick-billed Grasswrens in 2013 and 2014.”

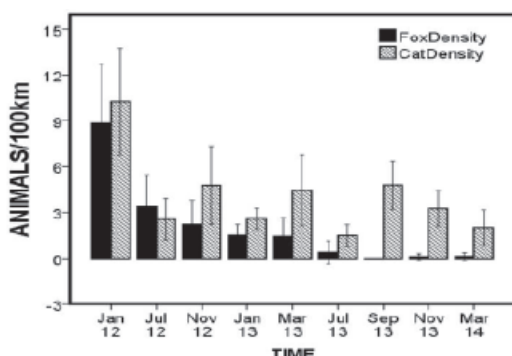
PREDATOR CONTROL



Reducing the pressure on native fauna caused by predation continues to be a core management goal at both of our major arid land reserves, Witchelina and Hiltaba. Key management activities that are achieving this goal include 1080 baiting for foxes and wild dogs, spotlight shooting for cats and canines and we are trialling cat traps that can be monitored remotely from the homestead at Witchelina.

The carnage that feral predators inflict on native fauna has been demonstrated at other reserves in the past by collecting gut samples from destroyed animals and analysing their contents. We have also begun collecting and analysing gut contents to gather reserve-specific knowledge on the distribution, abundance and diversity of prey items being consumed by foxes and cats. We commonly find more than 20 prey items per stomach and have found everything from scorpions and centipedes to small skinks and geckos, rabbits and even bats. So far five species not previously recorded at Witchelina have been found including the Gibber Dragon. The wide variety of species found makes it easy to see how cats are having a huge impact on native fauna right across Australia (see photo

for the cross section of fauna being consumed). With a concerted effort by our Rotational Managers in controlling feral predators we are pleased that we are starting to see a reduction in predator numbers at Witchelina. In the last financial year we shot only 11 foxes in 5500km of track driven which equates to about 0.2 foxes/100km. We are confident that foxes are now having minimal effect on native fauna, including ground dwelling birds such as Thick-billed Grasswrens, plovers and dotterels. Cats on the other hand, pose a much bigger management conundrum. We shot 115 cats in the same 5500km of track driven equating to about 2 cats/100km. While this is a reduction on previous years, cats are still the most potent predator on the reserve inhabiting all ecosystems and preying on literally everything. A male feral cat weighing 7.2kg was shot at Witchelina, a reminder that cats are specialised and effective hunters and once they go ‘feral’ can grow to an amazing size. The graph shows how predator numbers have declined at Witchelina since reliable data began being recorded. The job is not done and will require significant effort year in year out to maintain the benefit for SA’s native wildlife.



ALEX NANKIVELL- NFSA CONSERVATION PROGRAMS MANAGER

WHY WE GIVE GRANTS

RESEARCH, PROJECTS AND EDUCATION COMMITTEE

DR BOB SHARRAD AM – RESEARCH, PROJECTS AND EDUCATION CHAIR

One of the most enjoyable but onerous jobs in the Nature Foundation is to distribute precious funds from donors to a great variety of worthy projects. The committee meetings we have to carry out this work are made particularly interesting by the interactions between the members whose knowledge, experience and good humour is always most evident. Regrettably one of our long serving and most sagacious members, Colin Harris, has retired after over 10 years service. The rest of us, Susie Herzberg, Rob Morrison, David Hansman, Travis How, Jody Gates and I continue with the

Research, Projects and Education Committee and also the new Science Review Committee.

Twice each year we attract a great variety of applications for grants: from young postgraduate students, perhaps applying for funding for the first time; from community groups such as Friends of Parks, other conservation organisations and schools; from experienced researchers at Universities, SARDI and the SA Museum; and from members of the public. The overwhelming majority of the applications are worthwhile and of course (you know what I am about to write) there is never enough money to fund them all. So we assess the applications using a scoring system that

gives each a mark (out of 20). That should be the end of it but of course some projects score equally or sometimes different assessors have quite different ideas. "Oops", one thinks, "have I overlooked something?" So there is always a need to debate, argue and haggle to finally work out which will be funded.

RESEARCH, PROJECTS AND EDUCATION COMMITTEE

Dr Bob Sharrad AM, Dr Rob Morrison OAM, Dr David Hansman, Susie Herzberg, Colin Harris PSM (up to March 2014), Peter Copley (up to December 2014) and Dr Travis How (from February 2014) and Jody Gates (from February 2014).

RESEARCH SCHOLARSHIP GRANTS 2013-2014

UNIVERSITY	STUDENT	DEGREE	TOTAL GRANTED	GRANT TYPE	TITLE
Flinders University	Sarah Pearson	PhD	\$3,000	Scholarship	Disease resistance and sociality: An investigation of immune genes, social networks, and parasitism in a group living lizard
University of Adelaide	Giulia Ghedini	PhD	\$3,000	Scholarship	Providing local managers with the most effective strategies to avoid and reverse loss of kelp forests
University of Adelaide	Sophie Harrison	PhD	\$3,000	Scholarship	Cryptic species, distributions and conservation status of long-lived trapdoor spiders (<i>Araneae: Idiopidae</i>) of the Fleurieu and Southern Flinders region of South Australia
Flinders University	Madeline Thomson	Honours	\$1,500	Scholarship	Ecology of the Arid-zone White-winged Fairy-wren
Flinders University	Kelly Woolerton	Honours	\$1,500	Scholarship	Nesting success in the threatened Diamond Firetail (<i>Stagonopleura guttata</i>)
University of Adelaide	Anita Marquart	PhD	\$3,000	Scholarship	Effects of fire on the reproductive ecology of terrestrial orchids and their pollinators in fragmented landscapes of southern Australia
University of Adelaide	John Butler	PhD	\$3,000	Scholarship	Assessment of pollination rates and colonisation of revegetation area on Cygnet Park
University of Adelaide	Grace Hodder	PhD	\$3,000	Scholarship	The ecology of the Diamond Firetail, (<i>Stagonopleura guttata</i>), in the Mount Lofty Ranges
Flinders University	Michael Drew	PhD	\$3,000	Scholarship	Using stomach content and stable isotope analyses to quantify diet and understand the movements and habitat use of bronze whaler sharks (<i>Carcharhinus brachyurus</i>) within the South Australian Gulfs
University of Melbourne	Madeleine Yewers	PhD	\$3,000	Scholarship	How are multiple discrete colour forms maintained in the Tawny dragon lizard?
Flinders University	Maria Cecilia Passadore MSc	PhD	\$3,000	Scholarship	Unravelling the secrets of a new dolphin species: population size and spatial ecology of the Burrnun dolphin (<i>Tursiops australis</i>) in Coffin Bay, SA
Flinders University	Fenando Diaz-Aguirre	PhD	\$2,000	Scholarship	Social Dynamics and Genetic Structure of the Newly Described, Endemic Burrnun Dolphin (<i>Tursiops australis</i>) in Eyre Peninsula, SA
Flinders University	Angharad Johnston	PhD	\$3,000	Scholarship	Generating genomic tools to assist future conservation of the pygmy bluetongue lizard (<i>Tiliqua adelaidensis</i>)
University of Adelaide	Alexandra Bowman	PhD	\$3,000	Scholarship	Fallen logs: creating patchiness in chenopod shrublands of SA
University of Adelaide	Melissa Jensen	PhD	\$2,000	Scholarship	Reintroduction of the Idnya (Western Quoll, <i>Dasyurus geoffroii</i>) to the Flinders Ranges National Park, SA

University of Adelaide	Monique Smith	PhD	\$2,970	Scholarship	Interactions between native and introduced grass species in relation to the restoration of a grassy woodland habitat
University of Adelaide	Tayla Bowden	Honours	\$1,455	Scholarship	Warren activity of southern hairy-nosed wombats on the West Coast of SA
Uni SA	Bianca Amato	Honours	\$1,000	Scholarship	Evaluating field methods of nectar sampling and storage in Mallee woodland
Flinders University	Nahid Shokri Bousjein	PhD	\$3,000	Scholarship	Towards assessing the extinction risk of South Australian bees with regard to future climate change
Arid Recovery	Hannah Bannister	PhD	\$1,000	Project	Factors influencing the reintroduction success of the burrowing bettong (<i>Bettongia lesueur</i>) to arid Australia

TOTAL RESEARCH GRANTS AWARDED \$49,425

MYSTERIES OF LAKE EYRE GRANTS 2013-2014

GROUP	APPLICANT	GRANT TYPE	TITLE
University of Adelaide	Dr Michelle Guzik	Lake Eyre	Community structure of Great Artesian Basin mound springs of North Western Lake Eyre
SA Museum	Dr Peter Hudson & Assoc Prof Mark Stevens	Lake Eyre	Taxonomy and DNA barcoding of Australian Pogonine beetles

TOTAL WILDLIFE MYSTERIES OF LAKE EYRE GRANTS AWARDED \$6,250

SEAL LION FUND GRANTS 2013-2014

GROUP	APPLICANT	GRANT TYPE	TITLE
SARDI	Prof Simon Goldsworthy	Seal Lion	Monitoring the status, trends in abundance and key demographic rates of the Australian sea lion population at Seal Bay – Kangaroo Island

TOTAL SEAL LION GRANTS AWARDED \$6,250

RESEARCH PROJECT GRANTS 2013-2014

GROUP	APPLICANT	GRANT TYPE	TITLE
Ecological Monitoring Consultant	Elizabeth Lescheid	Project	Pike Floodplain Bird Monitoring
Arid Recovery	Dr Katherine Moseby & Assoc Prof Jeremy Austin	Project	Maintaining the genetic diversity of threatened species at Arid Recovery

TOTAL RESEARCH PROJECT GRANTS AWARDED \$11,000

COMMUNITY GRANTS 2013-2014

GROUP	APPLICANT	TOTAL GRANTED	GRANT TYPE	TITLE
Upper Stuart Reaches Landcare Group	Jane Blakeney	\$3,000	Community	Schools for Biodiversity - "Bush Buddies"

TOTAL COMMUNITY GRANTS AWARDED \$3,000



A burrowing bettong sampling a peanut butter and oat ball, used to bait traps. Credit: Hannah Bannister



Above: *Aprasia aurita* at Malone Heath Native Forest Reserve. Credit: Alix Baltais

Status of the Eared Worm-lizard (*Aprasia aurita*) in the South East of South Australia. Researchers: Alix Baltais and Cath Dickson on behalf of Nature Glenelg Trust.

'This status update has provided important baseline data for the species and will help guide future survey work...This project resulted in the discovery of two new populations of *Aprasia aurita*...'

Factors influencing the reintroduction success of the burrowing bettong (*Bettongia lesueur*) to arid Australia Researcher: Hannah Bannister

'Being able to release an animal from a semi-captive environment into the wild is such a rewarding experience and something that not many people get the opportunity to do in their lifetime. It's a memory I will treasure forever.'

OUR PEOPLE

COUNCIL, COMMITTEES AND STAFF

Patron & Donor Liaison	Dr Barbara Hardy AO
Patron	Dick Smith AO

COUNCIL

President	Bob Lott
Vice President	David Moyle AM
Honorary Treasurer	Nicholas Edwards
Honorary Secretary	Susie Herzberg
Council Members	Dr David Hansman
	Dr Rob Morrison OAM
	Chris Reed
	Suzanne Ridding (from November 2013)
	Dr Bob Sharrad AM
	Greg Toop

STAFF

Chief Executive	Ian Atkinson	
Conservation Programs Manager	Alex Nankivell	
Conservation Ecologist	Dr Greg Johnston	
Conservation Programs Officer	Hiyoba Ghirmay	(until February 2014)
Fundraising & Marketing Manager	Patrick Mentzel	
Communications Manager	Lisa Gellie	
Administration & Marketing Coordinator	Natasha Harper	
Riverland Coordinator - Water For Nature	Craig Ferber	(from August 2013)
Accountant	Georgie Fiedler	

WITCHELINA ROTATIONAL MANAGERS

Chris and Maria Reed
Barry and Maureen Wright
Greg and Janet Bannon
Vic Breeding and Penny Shepley
Kevin and Shirley Fahey
John Schulze
Paul Drummond
Brenton and Nanette Arnold
Fred and Petra van der Heiden

HILTABA CARETAKERS

Dave and Marjory Goodenough

HINDMARSH HEAD OFFICE STAFF



Left to right: Hiyoba Ghirmay, Alex Nankivell, Georgie Fiedler, Lisa Gellie, Natasha Harper, Patrick Mentzel, Ian Atkinson and Greg Johnston.
Photo: Leo Davis

COUNCIL MEMBERS



BOB LOTT PRESIDENT

Bob is an owner and Director of Venue*Tix, Weslo Staff, Thebarton Theatre and Quorn Quandongs. He is also a biochemist, producer and manager of major events and a theatrical entrepreneur. He serves on numerous boards and councils and is an enthusiastic environmentalist and supporter of Indigenous artists.



DAVID MOYLE AM VICE-PRESIDENT

David has occupied senior academic and leadership roles at Flinders University and has been a leading environmental advocate in SA. He has served as Chair of the Native Vegetation Council and the Reserves Advisory Committee and is currently a Commissioner on the Environment, Resources and Development Court. David was awarded a Member of the Order of Australia in 2006.



SUSIE HERZBERG HONORARY SECRETARY

Susie has worked in urban, environmental and strategic planning with private practice, government and with the University of Adelaide. She has served on numerous boards and is currently a board member on the Playford Memorial Trust and several private companies.



NICHOLAS EDWARDS HONORARY TREASURER

Nicholas is a practising lawyer, chartered accountant and is the principal of NDEdwards & Co. He has worked in the areas of investment banking and corporate tax consultancy.



DR DAVID HANSMAN COUNCILLOR

David is a pathologist and was Director of Microbiology at the Women's and Children's Hospital Adelaide for more than 25 years. He has had a lifetime interest in, and concern for, the natural environment.



DR ROB MORRISON OAM COUNCILLOR

Rob is a Professional Fellow at Flinders University. He is a science and natural history author and broadcaster on television and radio. In 2004 he was awarded the Order of Australia for his services to conservation and science communication.



CHRIS REED COUNCILLOR

Chris has a long term passion for the land and environment. He is a fourth generation farmer and still runs a farm that has been in his family since 1866. He has served two terms as Presiding Member of the SA Arid Lands Natural Resources Management Board.



SUZANNE RIDDING COUNCILLOR

Suzanne is an experienced executive, board director, company secretary and consultant. She has held leadership positions in private, public and not-for-profit sector organisations internationally and in Australia and is owner/manager of her own sustainability consultancy.



DR ROBERT SHARRAD AM COUNCILLOR

Bob is a field biologist and lectures at Flinders University. He was awarded a Member of the Order of Australia in 2013 for his services to science and the environment. Bob has been an active participant in a number of scientific and conservation groups and committees.



GREG TOOP COUNCILLOR

Greg brings a wealth of experience in real estate and knowledge of land and water issues and Chairs the Water For Nature Committee. He is Director of E-Real Estate and is the Managing Director of Coorong Cove Pty Ltd.

CARBON CAPTURE AND CARBON CREDITS WORKING GROUP*

Suzanne Ridding (Chair), Bob Lott, David Moyle AM, Nicholas Newland AM, Dr Tim Moore, John Gavin

FINANCE, GOVERNANCE & LEGAL

Nicholas Edwards (Chair), Susie Herzberg, Bob Lott

FUNDRAISING, MARKETING & EVENTS COMMITTEE

Bob Lott (Chair), Dr Rob Morrison OAM, Dr Barbara Hardy AO, Nicholas Newland AM, Megan Rusk

LAND ACQUISITION COMMITTEE

David Moyle AM (Chair), Bob Lott, Greg Toop, Dr Bob Inns, Dr Kym Nicolson (up to May 2014), Bob Laws, Brenton Gear

PROPERTY MANAGEMENT COMMITTEE

Chris Reed (Chair), Bob Lott, David Moyle AM, Dr Bob Sharrad AM, Brenton Arnold, Dr Travis How, Kaz Herbst

RESEARCH, PROJECTS AND EDUCATION COMMITTEE

Dr Bob Sharrad AM (Chair), Dr Rob Morrison OAM, Dr David Hansman, Susie Herzberg, Colin Harris (up to March 2014), Peter Copley (up to December 2014), Dr Travis How (from February 2014) and Jody Gates (from February 2014)

SIGNIFICANT ENVIRONMENTAL BENEFIT DEVELOPMENT COMMITTEE^

Bob Lott (Chair), David Moyle AM, Chris Reed, and John Gavin (or proxy Deb Agnew)

WATER FOR NATURE COMMITTEE

Greg Toop (Chair), Bob Lott, David Moyle AM, Phil Cole, Dr Anne Jensen, Steve Clark, Peter Forward, Dan Mollison, Andrew Beal

WATER FOR NATURE TECHNICAL ADVISORY GROUP (TAG)

Professor Mike Young, Deb Nias, Mark Siebentritt, Keith Walker

FRIENDS OF NATURE FOUNDATION SA COMMITTEE

John Sibly (Chair), Dene Cordes (Deputy), Ric Williams, Dr Barbara Hardy AO, Graeme Oats, Kaz Herbst, Jenny Steele Scott OAM, Janet Cotton, Graham Henley, Vilis Vasilevskas, Mandy Wallace, Shirley Rowe

* inaugural meeting in March 2014
This committee is tasked with looking at carbon sequestration and becoming a recognised carbon offset entity.

^ inaugural meeting in January 2014
This committee is tasked with expanding our nature conservation work through Significant Environmental Benefit Offsets.

OUR AMBASSADORS

DR BARBARA HARDY AO



Barbara is a co-founder of Nature Foundation SA. She has been working in the environmental field in a voluntary capacity since the early 1970s, and studied Earth Sciences at Flinders University following a Science Degree at the University

of Adelaide. Barbara has been a Commissioner of the Australian Heritage Commission, President of Nature Foundation SA, President of the Investigator Science and Technology Centre, and Chairman of the South Australian Landcare Committee.

Barbara was appointed an Officer of the General Division of the Order of Australia in 1987, received an Honorary Doctorate from Flinders University in 1993, as well as an Advance Australia Award 1991, SA Great Award 1992, Institution of Engineers Medal 1992, ABC Eureka Award for the Advancement of Science 1994, and was named South Australian Citizen of the Year in 1996 and South Australian Senior Australian of the Year in 2014.

DICK SMITH AO



Dick, founder of Australian Geographic magazine, met Barbara Hardy in 1986 and learned of the (then) National Parks Foundation of SA and our work at Coongie Lakes Wetlands. We were very pleased when, in June 2011, Dick

agreed to become our Patron, as we appreciate what an incredibly busy man he is – an Australian entrepreneur, businessman, aviator, and political activist.

Dick was appointed an Officer of the Order of Australia in 1999 for his services to the community, charity and business. In 1986 he was awarded Australian of the Year, and in 1992 he was awarded the Lindbergh Award, an annual world-wide award given to one individual for lifetime achievement of a balance between technical advancement and environmental preservation.

FELLOWS OF THE FOUNDATION

Clive Armour*
Avis Bonnin
Dr Mark Bonnin AM*
Warren Bonython AO*
David Cleland*
John Daenke
Dr Barbara Hardy AO
Eric Jackson*
Elizabeth Law-Smith
Betty Lewis*
Bob Lewis*
David Moyle AM
Reg Nelson
William (Bill) Nankivell
Julian Reid
Dr Robert Sharrad AM
Dick Smith AO

* deceased

HONORARY LIFE MEMBER

Robert Gerard AO

COLLEGE OF NATURE CHAMPIONS

Reg Nelson – Managing Director Beach Energy, Fellow of the Foundation
Hon. Karlene Maywald – Chair National Water Commission
Dennis Mutton – Company Director and Chair Native Vegetation Council (ret)
Elizabeth Law-Smith – Philanthropist
Dianne Davidson – Deputy Chancellor University of Adelaide, Member MDBA
Trevor Whitelaw – Senior Stakeholder Advisor SANTOS (ret)
Keith Langley – Associate Director Macquarie Private Wealth
Dr David Williams – Surgeon (ret)
Peter Michell – Managing Director Michell Wools
Yvonne Sneddon – Company Director, Chair Mt Lofty Ranges NRM Board (ret)

VALUING VOLUNTEERS

THERE ARE MANY INDIVIDUALS AND BUSINESSES WHO HAVE VOLUNTEERED THEIR TIME AND SUPPORT TO NATURE FOUNDATION SA, RANGING FROM PRACTICAL ON-THE-GROUND WORK THROUGH TO PROFESSIONAL SERVICES. NATURE FOUNDATION SA ENDEAVOURS TO DO AS MUCH AS WE CAN WITH LIMITED FUNDS TO ACHIEVE OUR GOALS AND WE ACKNOWLEDGE, AND ARE VERY GRATEFUL, FOR THE INCREDIBLE CONTRIBUTION OF VOLUNTEERS – THEY ARE THE VERY HEART OF THE FOUNDATION.

The breadth of volunteer support this year has included: conservation projects (including planting, feral pest mapping and control, native flora and fauna population mapping and conservation activities and 'citizen science' research support), strategic planning, legal services, financial services, property conveyancing, carbon credit capture advice, architectural services, building restoration and maintenance, environmental watering strategy and logistics, marketing (including communications, fundraising, event planning and logistics, website maintenance and membership drive phone calls), electrical work at Hiltaba and Witchelina, floor covering installation at Witchelina and office support at Hindmarsh.

Nature Foundation SA is governed by a Council supported by nine Sub-Committees. All members of the Nature Foundation SA Council and Committees volunteer their time – they receive no stipend.

The Grand Working Bees at Witchelina and Hiltaba had over 105 volunteers who helped with conservation and general maintenance work. The Mt Lofty Rangers 4WD Club continues to contribute invaluable hours to assist with property management including work at Witchelina surveying the southern boundary fence and fixing up an abandoned shed. The Conservation and Wildlife Management Branch of the Sporting Shooters Association of South Australia have contributed over 4000 hours (since 2010) to assist the Foundation with feral pest control on Hiltaba and Witchelina and infrastructure refurbishment at Witchelina.

Critical baseline study of flora at Hiltaba Nature Reserve was conducted by Scientific Expedition Group volunteers in August 2013. The 'Tiliqua Lizard Crawl' was held on 7 September; National Threatened Species Day, with 60 participants helping support field research conducted through Flinders University and the Walk for Nature was supported by over 30 volunteers who helped with the logistics of the walk.

The Foundation is grateful for the support of volunteers at the Planting Festivals on Kangaroo Island and Para Woodlands. The Para Woodlands Planting Day in June 2014 saw over 9,200 native lilies, grasses and trees planted with the goal of reconstructing habitats. Thanks to the dedicated DEWNR staff who coordinated the planting day.

Committed and passionate volunteers continue to make an incredibly significant contribution to the Foundation and we rely on their support in almost every facet of our operations. We take this opportunity to thank all of you and encourage anyone who has an interest in what we are doing to considering volunteering with Nature Foundation SA.

The Friends of Nature Foundation SA under the leadership of President John Sibby have been great supporters over numerous years and are involved with events, Grand Working Bees and assistance in the office. We appreciate their ongoing support and recognise how vital they are to the Foundation.



Left: Volunteers with a Yellow-footed Rock-wallaby trap at Mt Friday Hiltaba. Credit: Millie Nicolls

Above: Volunteers Linda and Geoff Squires with Dr Greg Johnston (NFSA Conservation Ecologist) - end of day relax at the Hiltaba Grand Working Bee. Credit: Natasha Harper

GOVERNANCE MATTERS

AT NATURE FOUNDATION SA

THE COUNCIL OF NATURE FOUNDATION SA RECOGNISES THE IMPORTANCE OF SOUND GOVERNANCE PRACTICES AND HAS MADE SIGNIFICANT STEPS OVER THE PAST FEW YEARS TO ENSURE THAT APPROPRIATE PRACTICES ARE FOLLOWED. THE COUNCIL RECOGNISES THAT IT HAS A RESPONSIBILITY TO OPERATE LAWFULLY AND ACCORDING TO THE FOUNDATION'S CONSTITUTION.

The Finance and Governance Committee which meets monthly, considers not only financial matters but also the matters of governance required by not-for-profit organisations like Nature Foundation.

Governance refers to the framework of rules, procedures and relationships by which the Council makes and implements decisions and includes continuous monitoring of such practices. The goal is to ensure accountability, fairness and transparency in all our dealings and to make sure that the roles and responsibilities of everyone involved are clearly understood.

Over the past few years, the Council has written and continually reviewed its Governance Manual which outlines the various policies adopted to meet both Constitutional requirements and sound governance. The Manual addresses matters such as meeting procedure, the roles of Executive and Council Members, conflict of Interest matters, the Committee Terms of Reference and matters relating to Delegations (to Committees and staff,) and Privacy. The Governance Manual also provides a guide to terms of Deeds, Funding agreements and reporting requirements.

A key addition in the 2013-14 year has been the development of an Investment Policy framework to guide future investment.

The Finance and Governance Committee has overseen the annual review of the Foundation's Strategic Plan as well as the regular Council self-review of performance.

Government requirements and the reporting required by the Office of Consumer and Business Affairs and the Australian Charities and not-for profits Commission (ACNC) are also regularly addressed.

The Finance and Governance Committee has commenced the preparation of an Operating Procedures Manual which addresses staff conditions as well as operating matters such as Animal Ethics, Firearms and vehicle use.

The skills of a number of Council members in Governance and the fact that several have completed the Australian Institute of Company Director's diploma provides valuable guidance to the Foundation in fulfilling the governance requirements required of a not-for-profit organisation.

Susie Herzberg
Honorary Secretary

“Nature Foundation SA works strategically to identify the sustainable funding sources necessary to undertake our commitments both now and into the future”

NATURE FOUNDATION SA INC.

FINANCIAL STATEMENTS FOR THE YEAR ENDED 30 JUNE 2014

24	COUNCIL'S REPORT
24	STATEMENT BY MEMBERS OF COUNCIL
24	CERTIFICATE BY MEMBERS OF COUNCIL
25	INCOME STATEMENT
26	ASSETS AND LIABILITIES STATEMENT
27	STATEMENT OF CHANGES IN EQUITY
27	NOTES TO THE FINANCIAL STATEMENTS
31	INDEPENDENT AUDIT REPORT

ABN 24 131 531 874

FINANCE, GOVERNANCE AND LEGAL COMMITTEE

Nicholas Edwards (Chair), Susie Herzberg, Bob Lott

COUNCIL'S REPORT

30 June 2014

Your council members submit the financial report of the Foundation for the financial year ended 30 June 2014.

I. General information

Council members

The names of the Council members throughout the year and at the date of this report are:

Bob Lott
David Moyle AM
Susie Herzberg
Suzanne Ridding (commenced 18 November 2013)
Bob Sharrad AM
David Hansman
Nicholas Edwards
Rob Morrison OAM
Chris Reed
Greg Toop

Principal Activities

The principal activity of the Foundation during the financial year was the raising of funds to undertake conservation projects and research and the fostering of community understanding of the value of natural heritage.

Significant Changes

No significant change in the nature of these activities occurred during the year.

2. Operating results and review of operations for the year

Operating result

The deficit of the Foundation for the financial year amounted to (\$681,065) (2013 surplus: \$1,174,865).



Bob Lott (President)



Nicholas Edwards (Treasurer)

22 September 2014

STATEMENT BY MEMBERS OF COUNCIL

The Council has determined that the Foundation is not a reporting entity and that this special purpose financial report should be prepared in accordance with the accounting policies outlined in Note 1 to the financial statements.

In the opinion of the Council the financial report as set out on pages 25 to 31:

1. Presents a true and fair view of the financial position of Nature Foundation SA as at 30 June 2014 and its performance for the year ended on that date.
2. At the date of this statement, there are reasonable grounds to believe that Nature Foundation SA will be able to pay its debts as and when they fall due.

This statement is made in accordance with a resolution of the Council and is signed for and on behalf of the Council by:



Bob Lott (President)



Nicholas Edwards (Treasurer)

22 September 2014

CERTIFICATE BY MEMBERS OF COUNCIL

In accordance with Section 35(5) of the Associations Incorporation Act (SA), during the financial year, no officer of the Foundation, or any firm of which an officer is a member, or any corporate in which an officer has a substantial financial interest, has received or become entitled to receive a benefit as a result of a contract between an officer, firm or corporate and the Foundation, other than,

- (a) benefits arising from the provision of certain minor goods or services in the normal course of the Foundation's activities.
- (b) Council member Chris Reed who has a contract for the provision of services to the Foundation for which he received a pecuniary benefit.

Signed in accordance with a resolution of the Council.



Bob Lott (President)



Nicholas Edwards (Treasurer)

22 September 2014

INCOME STATEMENT

Nature Foundation SA Inc.
ABN: 24 131 531 874
For the year ended 30 June 2014

		2014	2013
	NOTE	\$	\$
INCOME			
Donations		83,122	68,761
Major Gifts		-	750,000
Bequests		23,818	242,242
Commonwealth Government assistance	2	526,821	131,550
Fundraising revenue		221,758	123,621
Green Card Commission		14,985	14,220
Dividends and Interest received		299,523	324,838
Member subscriptions		15,593	16,658
Corporate Sponsorship	2	158,750	200,000
Other Grants	2	113,555	118,054
Other income from properties		6,631	46,059
Miscellaneous income		1,382	3,669
Profit on sale of Assets		2,261	28,051
State Government assistance	2	166,750	213,453
Significant Environmental Benefit offset payment		1,037,267	792,441
- Southern Iron Pty Ltd		195,446	200,000
- Santos		329,820	208,800
- Beach Energy		475,810	93,291
- Heathgate Resources		-	183,167
- Quasar Resources		485	30,120
- Senex Energy		35,706	73,092
- Epic Energy		-	3,971
Total Income		2,672,216	3,073,616
EXPENDITURE			
Employee benefits expense		713,314	639,694
Research grants / Community grants		227,487	405,145
Communications/Stationery/Printing		58,617	45,194
Depreciation and amortisation expense		59,938	47,934
Office expenses		37,575	39,566
Fundraising Events		35,995	29,715
Finance costs		12,362	4,812
Auditors remuneration		5,731	4,000
Insurance		6,670	2,839
Legal / Statutory fees		2,257	1,569
Postage / Freight		4,839	4,008
Subscriptions		897	10,924
Sundry expenses		-	462
Transfer to Project funds committed	9 (a)	876,075	(330,723)
Water For Nature expenses		117,853	26,390
Witchelina expenses		732,281	321,717
Para Woodlands expenses		285,007	280,545
Hiltaba expenses		116,390	130,343
BushbankSA expenses		23,999	30,952
Cygnnet Park expenses		1,500	2,093
Tiliqua expenses		1,463	1,570

Watchalunga expenses		5,622	-
Land Purchase Fund (Eaglehawk Waterhole)	15	27,406	-
Land Purchase Fund (Buckland Lake Land)		-	200,000
Total Expenses		3,353,280	1,898,750
Surplus for the year		(681,065)	1,174,865
Accumulated surplus at the beginning of the financial year		5,299,983	4,432,417
Transfer to Para Woodlands Capital Reserve	17	(164,526)	(307,299)
Accumulated surplus at the end of the financial year		4,454,392	5,299,983

ASSETS AND LIABILITIES STATEMENT

Nature Foundation SA Inc.
ABN: 24 131 531 874
As at 30 June 2014

		2014	2013
	NOTE	\$	\$
ASSETS			
CURRENT ASSETS			
Cash and cash equivalents	3, 1 (d)	3,258,467	7,207,738
Trade and other receivables	4	215,198	336,190
Other financial assets	5, 1 (c)	5,309,372	816,410
TOTAL CURRENT ASSETS		8,783,037	8,360,338
NON-CURRENT ASSETS			
Property, plant and equipment	6	5,598,417	5,487,403
Land held for sale	14	681,390	754,390
TOTAL NON-CURRENT ASSETS		6,279,807	6,241,793
TOTAL ASSETS		15,062,845	14,602,131
LIABILITIES			
CURRENT LIABILITIES			
Mortgage	7	10,952	22,160
Trade and other payables		147,737	255,505
Employee benefits		81,551	44,086
Other liabilities	9	1,672,725	635,772
TOTAL CURRENT LIABILITIES		1,912,964	957,523
NON-CURRENT LIABILITIES			
TOTAL LIABILITIES		1,912,964	957,523
NET ASSETS		13,149,881	13,644,608
MEMBERS' FUNDS	1 (c&d), 3, 5		
Reserves		3,223,663	3,037,326
Capital Reserve - Para Woodlands	17	5,471,825	5,307,299
Accumulated surplus		4,454,392	5,299,983
TOTAL MEMBERS' EQUITY		13,149,881	13,644,608

The accompanying notes form part of these financial statements

STATEMENT OF CHANGES IN EQUITY

Nature Foundation SA Inc.
ABN: 24 131 531 874
For the Year Ended 30 June 2014

2014					
	Accumulated Surplus	Asset Revaluation Surplus	Capital Reserve	General Reserves	Total
	\$	\$	\$	\$	\$
Balance at 1 July 2013	5,299,983	637,326	5,307,299	2,400,000	13,644,608
Increase / (Decrease) in reserves during the year		186,337			186,337
Surplus for the year	(681,065)				(681,065)
Para Woodlands Capital Reserve	(164,526)		164,526		-
Sub-total	(845,591)	186,337	164,526	-	-494,727
Balance at 30 June 2014	4,454,392	823,663	5,471,825	2,400,000	13,149,881
2013					
	Accumulated Surplus	Asset Revaluation Surplus	Capital Reserve	General Reserves	Total
	\$	\$	\$	\$	\$
Balance at 1 July 2012	4,432,417	493,993	5,000,000	2,400,000	12,326,410
Increase in reserves during the year		143,333			143,333
Surplus for the year	1,174,865				1,174,865
Para Woodlands Capital	(307,299)		307,299		-
Sub-total	867,566	143,333	307,299	-	1,318,198
Balance at 30 June 2013	5,299,983	637,326	5,307,299	2,400,000	13,644,608

The accompanying notes form part of these financial statements

NOTES TO THE FINANCIAL STATEMENTS

Nature Foundation SA Inc.
ABN: 24 131 531 874
For the Year Ended 30 June 2014

I Statement of significant accounting policies

(a) Basis of preparation

The financial report is a special purpose financial report prepared in order to satisfy the financial reporting requirements of the Associations Incorporation Act South Australia. The Council has determined that the Foundation is not a reporting entity.

The financial report has been prepared on an accruals basis and is based on historic costs and does not take into account changing money values or, except where specifically stated, current valuations of non-current assets.

The following significant accounting policies, which are consistent with the previous period unless otherwise stated, have been adopted in the preparation of this financial report.

(b) Property, plant and equipment

The depreciable amount of all property, plant and equipment is depreciated over the useful lives of the assets to the Foundation

commencing from the time the asset is held ready for use.

In the event the carrying amount of land held for sale is greater than the estimated recoverable amount, the carrying amount is written down immediately to its estimated recoverable amount and impairment losses are recognised either in the income statement or as a revaluation decrease if the impairment losses relate to a re-valued asset. A formal assessment of recoverable amount is made when impairment indicators are present.

(c) Financial assets

Investments held are originally recognised at cost, which includes transaction costs. They are subsequently measured at fair value which is equivalent to their market bid price at the end of the reporting period. Movements in fair value are recognised as an adjustment to reserves.

The Foundation has entered a number of funding agreements and is party to a number of deeds and agreements and bequests which place limitations on how funds are able to be spent. As a result

separate investment portfolios exist for these funds, the balances of which are identified in note 5.

(d) Cash and cash equivalents

Cash and cash equivalents include cash on hand, deposits held at call with banks, other short-term highly liquid investments with original maturities of three months or less.

The Foundation has entered a number of funding agreements and is party to a number of deeds and agreements and bequests which place limitations on how funds are able to be spent. As a result separate bank accounts and term deposits exist for these funds, the balances of which are identified in note 3.

(e) Employee benefits

Provision is made for the Foundation's liability for employee benefits arising from services rendered by employees to the end of the reporting year. Employee benefits have been measured at the amounts expected to be paid when the liability is settled.

(f) Income Tax

No provision for income tax has been raised as the Foundation is exempt from income tax under Div 50 of the *Income Tax Assessment Act 1997*.

(g) Leases

Leases of fixed assets where substantially all the risks and benefits incidental to the ownership of the asset, but not the legal ownership that are transferred to the Foundation are classified as finance leases.

Finance leases are capitalised by recording an asset and liability at the lower of the amounts equal to the fair value of the leased property or the present value of the minimum lease payments,

including any guaranteed residual values. Lease payments are allocated between the reduction of the lease liability and the lease interest expense for the period.

Leased assets are depreciated on a straight-line basis over their estimated useful lives where it is likely that the Foundation will obtain ownership of the asset or over the term of the lease.

Lease payments for operating leases, where substantially all of the risks and benefits remain with the lessor, are charged as expenses in the periods in which they are incurred. The lease is not recognised in the assets and liabilities statement.

(h) Revenue and other income

Revenue is measured at the fair value of the consideration received or receivable after taking into account any trade discounts and volume rebates allowed. For this purpose, deferred consideration is not discounted to present values when recognising revenue.

Interest revenue is recognised using the effective interest rate method, which for floating rate financial assets, is the rate inherent in the instrument. Dividend revenue is recognised when the right to receive a dividend has been established.

Grant and donation income is recognised when the Foundation obtains control over the funds which is generally at the time of receipt.

All revenue is stated net of the amount of goods and services tax (GST).

(i) Goods and services tax (GST)

Revenues, expenses and assets are recognised net of the amount of GST, except where the amount of GST incurred is not recoverable from the Australian Tax Office. In these circumstances, the GST is recognised as part of the cost of acquisition of the asset or as part of an item of the expense. Receivables and payables in the assets and liabilities statement are shown inclusive of GST.

2014	2013
\$	\$

2 Government & Other Assistance Income

Commonwealth Government Assistance

- GVEHO program	-	5,000
- Biodiversity Fund for Soil seed banks at Witchelina	497,450	126,550
- Commonwealth Environment Water Office	29,371	-
Total Commonwealth Government Assistance	526,821	131,550

State Government Assistance and Grants

- DEWNR Management subsidy	70,000	70,000
- ex Gratia refund of stamp duty	-	71,453
- The Adelaide & Mount Lofty Ranges NRM Board	81,750	-
- Department of Environment, Water & Natural Resources	15,000	72,000
Total State Government Assistance	166,750	213,453

Corporate Sponsorship

- Beach Energy	150,000	150,000
- SA Water	-	50,000
- Macquarie Group	5,000	-
- South Australian Murray-Darling Basin NRM Board	3,750	-
Total Corporate Sponsorship	158,750	200,000

Other Grants

- Native Vegetation Council	-	43,815
- Mazda Foundation	-	46,039
- SMEC Foundation	-	5,000
- Harcourts Foundation	3,000	5,000
- West End Community Fund	2,000	10,000

- Norman Wettenhall Foundation	-	8,200
- James N Kirby Foundation	18,000	-
- Perpetual Foundation	10,000	-
- Myer Foundation	6,555	-
- Mullum Trust	5,000	-
- Australian Communities Foundation	4,000	-
- Other	65,000	-
Total Other Grants	113,555	118,054

	2014	2013		2014	2013
	\$	\$		\$	\$

3 Cash and cash equivalents

Para Woodlands	1,232,191	5,544,689
Witchelina	1,274,214	681,639
Bushbank	427,221	417,955
Land Purchase Fund	234,115	258,256
Roy and Marjory Edwards Scholarship Fund	50,770	195,175
Nature Foundation	39,956	110,024
	3,258,467	7,207,738

During 2013/14 some \$4.29m of the Para Woodlands funds were transferred from cash and cash equivalents to investments in listed corporations (note 5) in line with Trustee Responsibilities as outlined in the Trustee Act 1936 and with the investment objectives for this fund as expressed in the Foundation's Investment Policy.

4 Trade and Other Receivables

CURRENT

Trade receivables	172,399	317,322
Prepayments	42,799	18,868
	215,198	336,190

5 Other Financial Assets

NON-CURRENT

Investments in listed corporations at market value		
Para Woodlands	4,294,521	-
Roy and Marjory Edwards Scholarship Fund	399,908	226,392
Nature Foundation	548,343	534,518
Water licence	66,600	55,500
	5,309,372	816,410

During 2013/14 some \$4.29m of the Para Woodlands funds were transferred from cash and cash equivalents to investments in listed corporations in line with Trustee Responsibilities as outlined in the Trustee Act 1936 and with the investment objectives for this fund as expressed in the Foundation's Investment Policy.

6 Property, Plant and Equipment

LAND		
Freehold Land		
At cost		
Witchelina	2,621,358	2,621,358
Hiltaba	785,000	785,000
Cygnat Park	267,937	267,937
At Valuer General's valuation		
Para Woodlands	1,400,000	1,400,000
Tiliqua	98,000	98,000
Total Land	5,172,295	5,172,295

PLANT AND EQUIPMENT

Plant and equipment		
At cost	547,825	392,658
Accumulated depreciation	(193,190)	(147,556)
Total plant and equipment	354,635	245,102
Motor vehicles		
At cost	116,324	98,986
Accumulated depreciation	(44,836)	(28,980)
Total motor vehicles	71,489	70,006
Other property, plant and equipment		
At cost		
Total other property, plant and equipment	-	-
Total plant and equipment	426,124	315,108
Total property, plant and equipment	5,598,417	5,487,403

7 Borrowings

CURRENT

Unsecured liabilities:		
Goods mortgage facility	10,952	22,160
Total current borrowings	10,952	22,160

8 Leasing Commitments

Operating lease commitments

Non cancellable operating leases contracted for but not capitalised in the financial statements

Payable - minimum lease payments:		
- no later than 1 year	22,000	22,000
- between 1 year and 5 years	22,000	44,000
	44,000	66,000

The property lease commitment is for the Nature Foundation office, The Manse, 32 Holden St, Hindmarsh and is a non-cancellable operating lease with a term of 5 years to 11 June 2016. Increase in lease commitment may occur in line with CPI.

9 Other Liabilities

(a)

Project funds committed		
Barbara Hardy Fund for Nature	66,338	66,338
Barbara Hardy Research Fund	-	19,032
Glossy Black Cockatoo KI	9,690	9,875
Paton Memorial	31,735	31,986
Australian Sea Lion Research Fund	13,253	24,284
Red Tail Black Cockatoo	-	42,594
Contingency Fund	2,077	6,537
Para Woodlands Operating Fund	54,802	226,519
Lake Eyre	-	6,252
Orange Bellied Parrot	63,635	64,429

	2014 \$	2013 \$
Nilpena Appeal	53,980	-
Watchalunga Appeal	9,730	-
Hiltaba Reserve for threatened species	70,352	32,395
Witchelina Reserve for Conservation from SEB funds	1,037,267	-
Woodland Birds of the River Murray	15,985	21,463
Optical Fibrescope Pygmy Bluetongue	-	1,068
	1,428,845	552,772

The Liability relating to Project funds committed balance has increased by \$876,075 from 2013 to 2014.

(b)		
Sponsorship income received in advance	150,000	-
Water For Nature income received in advance	93,880	83,000
Total Other Liabilities	1,672,725	635,772

10 Disclosure of economic dependence

For some time the Foundation has received a vital, annual subsidy of \$70,000 from the Department of Water, Environment and Natural Resources to support management costs. This ongoing commitment is subject to annual review.

11 Para Woodlands - "Nature Foundation Land"

By way of Deed dated 30 June 2003, land was transferred to the Foundation so that it may be retained, restored and conserved in its natural state. A Steering Committee was appointed to oversee the management and restoration of that land. A condition of the Deed was that the land could not be transferred to any other person other than the Minister; and if transferred to the Minister, then there would be no consideration. Notwithstanding, the Foundation retains title to the land and an asset value has been recognised in the financial statements based up on the Valuer General's valuation.

12 Recognition of non-monetary goods and services provided

The Foundation acknowledges the significant involvement and contribution of volunteers to its operation. Because of the wide diversity and nature of these activities, it is not possible to quantify this value in monetary terms.

13 Future Commitments

Postgraduate Research, Linkage and Community Grant applications are appraised by the Research, Projects and Education Committee. Because there is no obligation on the grant recipient to complete each project within the financial year, actual funding is often spread over a period greater than one year.

14 Land held for sale

Land held for sale includes properties purchased by the BushbankSA fund, which have high quality native vegetation, that is considered to represent South Australia's diverse and valuable natural heritage. The protection of this diversity is achieved by applying a nature conservation covenant and reselling these properties to new owners who are required to conserve and protect this natural environment.

15 Land Purchase Fund Contributions

Following a request from DEWNR the Council approved the allocation of \$27,406 from the Land Purchase Fund and \$42,594 from the Red Tail Black Cockatoo fund (refer note 8(a)) to the State Government to assist in the purchase of the Mitton property near Bangham and Frances, known as 'Eaglehawk Waterhole' which is owned and managed by the Nature Glenelg Trust.

16 Related Parties

Council member Chris Reed has a contract for provision of services to the Foundation for which he received a pecuniary benefit of \$10,000.

17 Para Woodlands Reserve

The Foundation holds in cash and other financial assets \$5 million of capital funds provided by an individual donor. The intention is for the investment principal plus CPI to be preserved in perpetuity and that the annual investment earnings will be applied for restoration works on the Para Woodlands Reserve.

18 Capital Commitment

As at 30 June 2014 there is a commitment to purchase the property known as "Watchalunga", Allotment 13 in DP 63089 Hundred of Alexandrina in the area named Finniss for \$150,000 subject to the terms of the contract being met, during 2014/15.

INDEPENDENT AUDIT REPORT

Nature Foundation SA Inc.
ABN: 24 131 531 874
For the Year Ended 30 June 2014



PITCHER PARTNERS
ACCOUNTANTS AUDITORS & ADVISORS

100 Greenhill Road
Parkside SA 5043
Australia

Tel: 08 839 2800
Fax: 08 839 2885
www.pitcher.com.au
enquiries@pitcher.co.za

Postal Address:
PO Box 98
Unley SA 5081
Australia

PRINCIPAL
MARK O'NEILL
THOMAS W. NICK
MICHAEL LUNG
EDWARD D. BROOKS
ANDREW D. BRADY
BENJAMIN
ANDREW P. FAULKNER
ANDREW BEET
LINDA O'NEILL

Pitcher Partners is an association of independent firms
Melbourne | Sydney | Perth | Adelaide | Brisbane | Newcastle

NATURE FOUNDATION SA INC
ABN 24 131 531 874

INDEPENDENT AUDITOR'S REPORT
TO THE MEMBERS OF
NATURE FOUNDATION SA INC

We have audited the accompanying financial report, being a special purpose financial report of Nature Foundation SA Inc, which comprises the statement of financial position as at 30 June 2014, the statement of comprehensive income, statement of changes in equity for the year then ended, notes comprising a summary of significant accounting policies and other explanatory information, and the Council's declaration.

Council Members' Responsibility for the Financial Report

The members of the council are responsible for the preparation of the financial report and have determined that the basis of preparation described in Note 1 to the financial report is appropriate to meet the financial reporting requirements of the entity.

The members' responsibility also includes such internal control as the members determine is necessary to enable the preparation of a financial report that is free from material misstatement, whether due to fraud or error.

Auditor's Responsibility

Our responsibility is to express an opinion on the financial report based on our audit. We conducted our audit in accordance with Australian Auditing Standards. Those standards require that we comply with relevant ethical requirements relating to audit engagements and plan and perform the audit to obtain reasonable assurance about whether the financial report is free from material misstatement.

An audit involves performing procedures to obtain audit evidence about the amounts and disclosures in the financial report. The procedures selected depend on the auditor's judgement, including the assessment of the risks of material misstatement of the financial report, whether due to fraud or error. In making those risk assessments, the auditor considers internal control relevant to the entity's preparation and fair presentation of the financial report in order to design audit procedures that are appropriate in the circumstances, but not for the purpose of expressing an opinion on the effectiveness of the entity's internal control. An audit also includes evaluating the appropriateness of accounting policies used and the reasonableness of accounting estimates made by those charged with governance, as well as evaluating the overall presentation of the financial report.

We believe that the audit evidence we have obtained is sufficient and appropriate to provide a basis for our audit opinion.

Pitcher Partners SA Pty Ltd ABN 36 02 209 735
Liability limited by a Scheme approved under Professional Standards legislation



NATURE FOUNDATION SA INC  PITCHER PARTNERS
ABN 24 131 531 874

INDEPENDENT AUDITOR'S REPORT
TO THE MEMBERS OF
NATURE FOUNDATION SA INC

Independence

In conducting our audit, we have complied with the independent requirements of the Australian professional accounting bodies and the Australian Auditing Standards.

Opinion

In our opinion, the financial report of Nature Foundation SA Inc. presents fairly, in all material respects, the association's financial position as at 30 June 2014 and its performance for the year ended on that date in accordance with the accounting policies described in Note 1 to the financial report and the financial reporting requirements of Associations Incorporation Act (1985).

Basis of Accounting

Without modifying our opinion, we draw attention to Note 1 to the financial report, which describes the basis of accounting. The financial report has been prepared to assist Nature Foundation SA Inc to meet the requirements of the Associations Incorporation Act SA 1985 and the needs of the members as determined by the Council. As a result, the financial report may not be suitable for another purpose.



A P FAULKNER

Principal
Date:

23 September, 2014



PITCHER PARTNERS

Adelaide

HONOUR ROLL

NFSA SUPPORTERS (INDIVIDUALS AND CORPORATE)

INDIVIDUALS

MAJOR BENEFACTOR

(DONATION OF AT LEAST \$5000)

MAJOR SUPPORTER

(DONATION OF BETWEEN \$2500-4999)

SUPPORTER

(DONATION OF BETWEEN \$500-2499)

IT IS WITH SINCERE GRATITUDE
THAT WE THANK THE FOLLOWING
INDIVIDUALS FOR THEIR VERY WELCOME
SUPPORT OF NATURE FOUNDATION SA.

MAJOR BENEFACTORS

Andrew, Ms Clara
Angas, Mr & Mrs Alistair & Janet
Armour, Mrs Heather
Bell, Mr & Mrs J & F
Bonython, Mr Warren AO & Mrs Bunty *
Briggs, Mrs Gillian *
Broad, Ms Margery
Brooks, Mr Hector #
Buckley, Ms Kate
Cavill, Mr Richard
Crathern, Mr Daniel
Cross, Dr Diana W
Cundell, Mrs Peggy
Darvall, Mrs Barbara
Dennis, Ms Hilary
Donald, Mr & Mrs W & C
Drew, Dr Michael
Edwards, Mrs Marjory
Gerard, Mr Robert
Hardy, Dr Barbara AO
Holt, Dr John & Mrs Mary
Jensen, Mr Peter
Law-Smith, Mrs Elizabeth M
Lewis, Mrs Beth
Lewis, Mrs Betty *
Ligertwood, Miss Marion *
Maguire, Ken *
MacLachlan, Mr Hugh & Mrs Fiona
McLachlan, The Hon Ian
Mitchell, Mr Tim
Murfet, Mr Denzel
Parker, Mr Richard and Mrs Trish
Paton, Dr Barbara C
Paton, Dr David & Dr Penny
Piper, Mr Robert AO & Mrs M
Pleydell Charitable Trust, Robin & Janice
Preiss, Mr Kenneth
Radcliffe, Dr Barbara
Ransom, Doug & Oliver and Helga Linnert
Rischbieth, Mrs Judith
Short, Mr & Mrs Henry & Doff
Simpson, Mr Antony & Mrs Mary Lou
Smith, Mr Dick AO
Squire, Jason
Taylor, Mr Glen
Verco, Mrs Katherine D #

Westwood, Betty *
Wollaston, Mr Terence *

MAJOR SUPPORTERS

Bradman, Mr John
Bristow, Mrs Gloria
Buick, Mr Bryon
Crawford, Mr Michael & family
Daniels, Prof Chris
Gray, Mr Tom
Hardy, Ms Rebecca & Dolan Mr Richard
Hausner, Mr Ken
Herzberg, Mrs Susie & Dr Zen
Holden, Ms Brenda
Holmes, Mr Allan
Howe, Ms Anne
Jeffries, Mr Lachlan
Jennings, Ms Wendy
Kingham, Mrs Lara
O'Connor, Mr & Mrs Clive & Marie
Steele Scott, Miss Jenny
Stoecker, Mr Bernd #
Vollmer, Ms Nikola
Wall, Dr Barbara
Wilson, Judge Andrew
Woodall, Dr Roy & Mrs Barbara

SUPPORTERS

Abbie, Mrs Audrey #
Adamson, Mr Peter
Alexander, Mr Peter & Mrs Pat
Apponyi, Mr Silvio
Ayliffe, Ms Janet
Barker, Dr Sue & Mr Rob Marshall
Beer, Mr Colin & Mrs Joan
Beer, Mr Peter & Mrs Alison
Bennett, Mr Christopher & Mrs Michelle
Bianco, Mr Nick
Bignell, Mr Graeme
Bird, Mr Peter
Birks, Mr Nicholas
Black, Dr Andrew & Mrs Margie
Bonnin, Mrs Avis
Boros, Ms Catherine
Boxall, Ms Melody
Forward, Mr Peter & Mrs Bronwyn
Brown, Mr Robert
Burch, Mr Robert & Mrs Leanne
Cain, Ms Kathleen
Catchlove, Ms Linda
Carter, Mr Derek & Mrs Carlsa
Carthew, Prof Sue
Chamberlain, Ms Celeste
Clark, Ms Linda Anne
Coleman, Miss Sonya
Cook, Mr Lyall & Mrs Lynette
Cordes, Mr Dene
Coulter, Dr John R
Crafter, Mr Peter & Mrs Jenny
Crawford, Dr Caroline
Crawford, Mrs Ann #

Crawford, Mrs Josephine M #
Culshaw, Mr John
Curnow, Ms Pauline & Mr Harry Greet
Custance, Mr John #
Daenke, Mr John
Dale, Ms Cindy
Davis, The Hon Legh
Davis, Mr Leo
Day, Ms Rosalie
Doddridge, Mrs Nita
Douglas, Ms Rosie
Downer, Lady Mary
Duguid, Mrs Jane
Dyson, Ms Megan & Colin, Stuart and James
Gallagher
Evans, The Hon Iain
Fander, Mr Hans & Mrs Judy
Fellows, Ms Beverley
Fenner, Mr William G
Foale, Miss Karen
Foot, Ms Mandy
Forwood, Mr Michael & Mrs Wendy
Fowler, Ms Cathy
Furness, Dr Margaret
Gamble, Mr Daryl
Garrett, Mr Clinton
Garton, Ms Helen C
Gill, Mr Steve & Mrs Caroline
Gillespie, Ms Kate
Germein, Ms Georgia, Ella and Clara
Grieve, Mr Noel L
Haddy, Mr Brian
Hammond, Mr Rod
Hansman, Dr David & Mrs Miriam
Hargrave, Mr Charles L #
Harris, Mr Colin
Harvey, Mr Richard & Mrs Cecily
Hawdon, Ms Angela, Mr Patrick Stock & Family
Hayman, Mr & Mrs E G & M J
Head, Mr Brenton
Hill-Smith, Mr Robert
Hoebee, Mr Aart
Hohenburger, Ms Michaela
Ilic, Dr James
Jackson, Mrs Agnes #
Jackson, Mrs Pat
Jones, Mr Graeme
Langman, Mr Ron
Laugsford, Mr Nick & Ms Heather Nimmo
Laws, Mr Robert
Leak, Ms Nina
Lee, Mrs Margaret
Legoe, The Hon Christopher & Mrs Jenny
Lester, Mr Ken #
Lippett, Mrs Elma #
Lott, Mr Robert
MacDonal, Mr Peter
Mallen, Mr Nigel
Mart, Ms Bronwyn
Matthews, Mr Adam

HONOUR ROLL

McConnell, Mr Rhett
 McEwin, Mr Adrian & Mrs Cynthia
 McGregor, Mrs Skye
 Michell, Mr Raymond & Mrs Rosemary
 Michell, Mr Peter
 Milne, Ms Amanda
 Morphett, Mr John
 Morris, Ms Julie
 Morvell, Mr Steve
 Moyle AM, Mr David
 Mudie, Mr Paul-John
 Neill, Mrs Jenny
 Nelson, Mrs Sue
 Newland AM, Mr Nicholas
 Norrie, Dr Peter
 Oliver, Mr Ian & Mrs Margaret
 Ophel, Mrs Beth
 Ottey, Ms Brooke
 Palyga, Mr Stephen
 Parson, Mr Wolford & Mrs Marie
 Paton, Dr Barbara C
 Patsitis, Mrs Kathleen
 Pearce, Mr Graham & Mrs Glenys
 Pederick, Mrs Betty
 Peters, Mr Fred & Mrs Fleur
 Pierce, Mr Paul R
 Pike, Mr John & Mrs Jenny
 Pocock, Ms Rosemary
 Pollard, Mr Geoffrey
 Prince, Ms Allison
 Prosser, Mrs Josephine
 Rafferty, Ms Margaret
 Ragless, Ms Maggy #
 Rommey, Mr Peter J
 Rowett, Ms Sharon
 Rowland, Mr Richard
 Rowley, Ms Hilda
 Ryan, Mr Michael
 Rychter, Mrs G M #
 Sakko, Mr Kerry
 Sakko, Ms Rona
 Sanders, Mr Frank & Mrs Judith
 Scanlon, Mr John
 Scharfbillig, Dr Rolf
 Schutz, Mr John
 Shiell, Mr Mark
 Sibly, Mr John
 Slattery, Mr Peter D
 Smith, Mrs Helen
 Stock, Mr Andrew
 Talbot, Mr Tyrrell
 Thorpe, Mr Geoffrey & Mrs Judith
 Tomlinson, Mr Dean
 Tudorovic, Mr Peter
 Van der Wel, Mr Bart
 Vasilevskis, Mr Vilis & Joan
 Villiers, Ms Kerri
 Vincent, Mrs Jeanine
 Waddy, Dr John #
 Wallis, Mr Raymond & Mrs Silvija
 Walters, Mr Kenneth
 Ward, Mr Brian & Mrs June
 Williams, Mr Ric & Mrs Deni
 Welsby, Mr Matthew
 Wilson, Mr Will
 Wilson, The Hon Ian# & Mrs Mary

Wong, Mr Tony
 Wood, Dr Tim & Mrs Sandra
 Woolcock, Mr Richard & Mrs Leona
 Wotton, The Hon David & Mrs Jill
 Wreford, Mr Richard & Mrs Beth
 Wyness, Mr David
 Young, Prof Mike
 Yule, Mrs Pamela
 Zeppel, Dr Heather

CORPORATE

MAJOR BENEFACTOR

(DONATION OF AT LEAST \$10,000)

MAJOR SUPPORTER

(DONATION OF BETWEEN \$5000-\$9999)

SUPPORTER

(DONATION OF BETWEEN \$1000-\$4999)

IT IS WITH SINCERE GRATITUDE
 THAT WE THANK THE FOLLOWING
 BUSINESSES AND ORGANISATIONS FOR
 THEIR VERY WELCOME SUPPORT OF
 NATURE FOUNDATION SA.

MAJOR BENEFACTORS OF THE FOUNDATION

Australian Government
 • Commonwealth Environmental Water Office
 South Australian Government
 • Department of Environment, Water and
 Natural Resources (DEWNR)
 • Native Vegetation Council

Allyson Parsons Art
 BankSA
 Beach Energy
 Birds Australia Southern NSW & ACT
 Channel 7
 CMV Foundation
 dbusiness events
 Environment Media Australia – John Maquire
 Jacobs
 John T Reid Charitable Trusts
 James N Kirby Foundation
 KI by Geoff Hardy
 Macquarie Private Group
 Mazda Foundation
 Megan Dyson Environmental Law & Policy
 Consultant
 The Perpetual Foundation
 SA Water
 West End Community Fund
 Venue Tix
 Zoos SA

MAJOR SUPPORTERS

South Australian Government
 • Adelaide & Mt Lofty Ranges NRM Board
 • Murray Darling Basin NRM Board
 • Northern & Yorke NRM Board
 • SA Health

5AA
 ABC891
 Arts Project Australia - Earth Station
 Atlas Electrical - John Ovenden
 GVE SHO Grant
 Harcourts Foundation
 LAMS Engineering
 Mullum Trust
 The Myer Foundation
 Norman Wettenhall Foundation
 SMEC
 Uni SA
 Wendy Jennings
 Wild Bush Luxury

SUPPORTERS

South Australian Government
 • SA Museum
 Adelaide Business Bureau
 Adelaide Piano Quintet
 Arkaroola Resort
 Arkaba Station
 Australian Communities Foundation
 Australia Post
 Barbara Hardy Institute, UniSA
 Big River Stayz
 Carman's
 EBS Ecology
 Electra Net
 Eyefood Photography– Andy Rasheed
 Flinders University
 Graham Chilman Photography
 Great Southern Rail
 Ideas2fruition Pty Ltd
 Iluka
 Jarret Nissan
 Jeffries
 Loxton to Bookpurnong Local Acton Planning
 Committee Grant for Water For Nature
 Mount Lofty Springs
 Nazareth Catholic College
 Nigel Parsons Photography
 Paddy Pallin
 Pimlott Framing
 Santos
 Seastar Apartments Moonta
 Solito Fine Colour Printers
 Statewide Super
 The Factory
 University of Adelaide Environment Institute
 Westpac
 Wilpena Pound Resort
 Wing's Barossa Bird & Bush Retreat
 Volunteer Support Fund Grant for Water For
 Nature

* = bequests, # = deceased. The Recognition Levels identify cash or kind contributions of a minimum of \$500 in one financial year and are tallied over the last 10 years (cash) and over the last 5 years (kind).

Disclaimer: The Donor Recognition Level information comprises data drawn from over the last 10 years and although we believe this information to be correct, we are unable to guarantee accuracy.

SEB SUPPORTERS



MAJOR BENEFACTORS



Department of Environment, Water and Natural Resources (DEWNR)
Native Vegetation Council



Environment Media Australia – John Maguire

Megan Dyson Environmental Law & Policy Consultant

MAJOR SUPPORTERS



Adelaide & Mt Lofty Ranges NRM Board
Murray Darling Basin NRM Board
Northern & Yorke NRM Board
SA Health



Atlas Electrical - John Ovenden

GVESHO Grant

Liquid Associated Mechanical Services (LAMS)

EVENT SPONSORS 2013-2014



Adelaide Business Bureau

Ambro

Animals Anonymous

Coopers Butcher Burra

Eyefood Photography – Andy Rasheed

Graham Chilman Photography

Kathleen Cain

Kathleen Patitsas

Leo Davis Photography

Linda Catchlove

Marie Parsons

Pertaringa

Woodhouse Activity Centre

Disclaimer: The Donor Recognition Level information comprises data drawn from over the last 5 years and although we believe this information to be correct, we are unable to guarantee accuracy.