



Nature
FOUNDATION SA

NFSA
35
1981-2016



SAVE PROTECT RESTORE

NATURE FOUNDATION SA

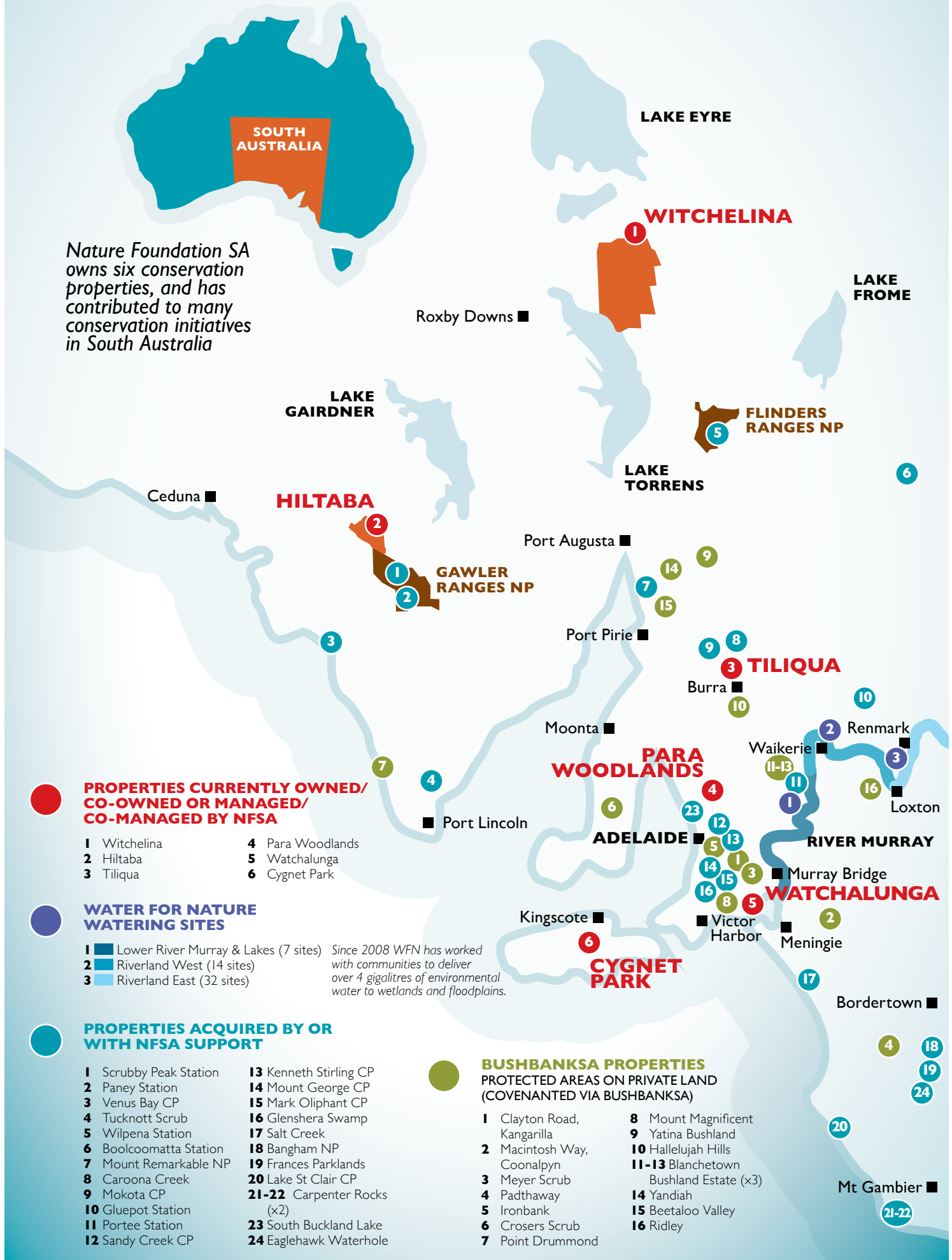
2016
ANNUAL REPORT

Exploring the Warren Bonython
Walking Trail at Hiltaba

OUR FOOTPRINT



Nature Foundation SA owns six conservation properties, and has contributed to many conservation initiatives in South Australia



PROPERTIES CURRENTLY OWNED/ CO-OWNED OR MANAGED/ CO-MANAGED BY NFSA

- 1 Witchelina
- 2 Hiltaba
- 3 Tiliqua
- 4 Para Woodlands
- 5 Watchalunga
- 6 Cygnet Park

WATER FOR NATURE WATERING SITES

- 1 Lower River Murray & Lakes (7 sites)
 - 2 Riverland West (14 sites)
 - 3 Riverland East (32 sites)
- Since 2008 WFN has worked with communities to deliver over 4 gigalitres of environmental water to wetlands and floodplains.*

PROPERTIES ACQUIRED BY OR WITH NFSA SUPPORT

- 1 Scrubby Peak Station
- 2 Paney Station
- 3 Venus Bay CP
- 4 Tucknott Scrub
- 5 Wilpena Station
- 6 Boolcoomatta Station
- 7 Mount Remarkable NP
- 8 Caroon Creek
- 9 Mokota CP
- 10 Gluepot Station
- 11 Portee Station
- 12 Sandy Creek CP
- 13 Kenneth Stirling CP
- 14 Mount George CP
- 15 Mark Oliphant CP
- 16 Glenshera Swamp
- 17 Salt Creek
- 18 Bangham NP
- 19 Frances Parklands
- 20 Lake St Clair CP
- 21-22 Carpenter Rocks (x2)
- 23 South Buckland Lake
- 24 Eaglehawk Waterhole

BUSHBANKSA PROPERTIES PROTECTED AREAS ON PRIVATE LAND (COVENANTED VIA BUSHBANKSA)

- 1 Clayton Road, Kangarilla
- 2 Macintosh Way, Coonalpyn
- 3 Meyer Scrub
- 4 Padthaway
- 5 Ironbank
- 6 Crosers Scrub
- 7 Point Drummond
- 8 Mount Magnificent
- 9 Yatina Bushland
- 10 Hallelujah Hills
- 11-13 Blanchetown Bushland Estate (x3)
- 14 Yandiah
- 15 Beetaloo Valley
- 16 Ridley



35^{NFSA}
1981-2016



NATURE FOUNDATION SA INC.

CONTENTS

2	PRESIDENT'S REPORT
4	CEO'S REPORT
5	OUR STRATEGIC PLAN
6	OUR LANDS
8	BUILDING CONSERVATION
9	ECOTOURISM: CONNECTING PEOPLE TO NATURE
10	LEARNINGS OF THE LAND
12	WATER FOR NATURE
14	BUSHBANK SA
15	FUNDRAISING FOR NATURE
16	OUR PEOPLE
19	OUR CONTRIBUTORS
20	WHY WE GIVE GRANTS
21	HONOUR ROLL
22	OUR GOVERNANCE
23	FINANCIAL REPORT
32	CORPORATE PARTNERS

Images courtesy of
Subbu Conley, Leo Davis,
Paul Drummond, Susie
Herzberg, Hugo Hopton,
John Ovenden, Ed Lowry,
Fiona Paton, Lange Powell,
Chris Reed, Bob Sharrad,
Patrick Mentzel and
Natasha Harper.

Nature Foundation SA. 32 Holden Street, Hindmarsh SA 5007
PO Box 448, Hindmarsh, SA 5007
Phone: 08 8340 2880 Email: naturefoundationsa@nfsa.org.au

 [facebook.com/NFSAI](https://www.facebook.com/NFSAI)  [@NatureFSA](https://twitter.com/NatureFSA)

 [@NatureFoundation_SA](https://www.instagram.com/NatureFoundation_SA)

www.naturefoundation.org.au

PRESIDENT'S REPORT



HELLO TO ALL OF OUR WONDERFUL NATURE FOUNDATION SA FRIENDS AND SUPPORTERS. AS I SAY EACH YEAR IT HAS BEEN AN EXTREMELY BUSY BUT VERY SUCCESSFUL YEAR. THE APPRECIATION AND PRAISE FOR THE OUTCOMES OF NATURE FOUNDATION OFTEN SPOKEN OF BY MEMBERS AND DONORS IS MOST GENEROUS. WE ARE VERY PROUD OF THE CONTINUED POSITIVE COMMENTS MADE ABOUT THE BODY OF WORK UNDERTAKEN BY THE COUNCIL, ITS COMMITTEES AND STAFF.

Financial Challenges and our efforts to meet them

We have continued to grow and develop in many ways, but we have encountered financial blockages this year not experienced in the past. These challenges have driven the Foundation to look for new and different initiatives which will, when developed, produce new income streams allowing the Foundation to continue its expansion. So more than ever the Foundation will rely on the continuing support of its members and donors to enable the Council to continue the work of the Foundation to Save, Protect and Restore.

The downturn in the Mining and Oil and Gas industries has seen less new work done on-site, and the major changes in staff numbers in many of our partners' structures has meant much of the fabulous work done by the Significant Environmental Benefit (SEB) Committee, Council and staff in developing relationships, has been lost. More importantly, the Council is most concerned at a number of the proposed changes to the Native Vegetation policy. A range of changes are sensible, but there are a number of provisions which have the potential to very significantly and adversely affect the Nature Foundation alone. This has the potential to see deployment of SEB funds on Witchelina and Hiltaba denied or significantly curtailed.

To counter this new problem we have been spending a lot of time developing ecotourism opportunities. This will take some time to bring significant income to the Foundation, but has the potential to do so in the future.

In sync with this programme, which is already underway, a most exciting new initiative developing a Geo-tourism business plan is attracting some of our greatest academic and geophysicists' minds to assist us in this task. Once completed this plan will have identified the most extraordinary geological, ecological, cultural (both original land owners and pastoral) and paleontological features of the Northern Flinders centred on our amazing property Witchelina – it has been said that the Willouran Ranges on Witchelina is one of – if not the most important geological features in the state!

We are also investigating the concept of purchasing properties by raising funds for both purchase and ongoing management via the sale of shares in a limited liability company. This concept is used commonly in Victoria and a most successful example in South Australia is the Bushland Conservation Pty Ltd group, originally propagated by John Smyth, Robert and Ian Hannaford and their group of supporters.

We have seen the Perpetual Endowment Fund grow this year thanks to a very generous bequest by John Custance and his mother Vi. Bequests have been so fundamental to the success of the Foundation over its 35 years. And now with the College Of Nature Champions

initiative – with its new enthusiastic leader Baden Teague – we have great hopes that in the future our day-to-day income will be assured, allowing the Foundation to grow and develop.

During this year we decided to add Hiltaba to the revolving manager concept that has worked so successfully at Witchelina for a number of years – the overall improvement to the infrastructure at Hiltaba is most pleasing.

A great new addition was the appointment of a dedicated Program Manager for Water For Nature (WFN). This has meant that the CEO is not tied directly to one aspect of the Foundation's work. The most wonderful success the Foundation has achieved in attracting philanthropic grants to the WFN project has ensured that this great programme of the Foundation is now self-funding.

"Treasure Hunt for Nature" was a very successful event that I had run back in 1987 as part of the City of Adelaide's sesquicentenary celebrations. It was a great opportunity for the Foundation to further develop relationships with the most prestigious of our cultural organizations along North Terrace.

Farewell

Whilst not in the reporting period, a great stalwart – Bob Sharrad – stepped down recently. He has served as a Councillor, President, Vice President, Fellow and Committee Chair over many years for the Foundation.

It seems wherever one travels in the scientific world in this state someone will have been taught by Bob or received a grant from the Foundation meeting Bob on the way.

There are more details later in the report but let me say the Foundation has been greatly enriched by Bob's leadership and scientific endeavour; it's a great pity Bob has retired but his association is still very much alive and well as he is Chairman of the Scientific Expedition Group (SEG) and is conducting scientific studies on some of our properties.

Farewell too to Councillors Dr David Hansman and Greg Toop, who both left Council through the year. Sincere thanks to them for their service to Nature Foundation and nature conservation.

New Councillors and CEO

We welcome our two new Councillors, Tony Sharley and Chris Daniels. There are backgrounds on these two very welcome additions to our Council later in the Annual Report.

In late December last year, our previous CEO Ian Atkinson announced he had taken another appointment after three years at Nature Foundation SA. We thank Ian for his efforts over those years – he will be best remembered for his commitment to the WFN programme.

In searching for our new CEO (from a highly credible panel), the subsequent appointment brought about the single most significant thing to happen to the Foundation during this financial year and for many years. We appointed Hugo Hopton as our new CEO – with Hugo the Foundation moves up into another league. In the short time he has been with us the relationship with many of our external connections, the incredible lift in staff morale and the respect in which the Councillors and committee members hold Hugo has seen a great lift in productivity and much improved outcomes.

I must say that despite dealing with the normal somewhat tortuous machinations of a Council of 11 persons, I am enjoying the Foundation more than I ever have in the past working with Hugo and his staff. Amongst many highlights Hugo has brought to the Foundation are the following:

- > The running of a combined staff and Councillor conference that contributed significantly to the morale improvement of staff
- > The direct engagement with Federal Government departments and personnel by undertaking semi-regular trips to Canberra
- > The improvement in matters of process in Council and Committee management
- > Undertaking a most impressive programme commencing within days of his appointment of meeting with almost all Councillors, committee persons and business colleagues
- > The introduction of the process of encouraging staff and others to think outside the square and to recognise positives in people rather than dwelling on negatives
- > His embracing of the Volunteers For Nature initiative. This has been 'on the books' for a couple of years and is an obvious option to engage with people with expert skills whose donation of time and skills will significantly cut costs to the Foundation. For example we are gathering together a pro bono panel of lawyers that will support the Foundation in dealing with legal matters in the future this will, when fully developed, be one of our best initiatives.

I am very proud of our continuing engagements with our first peoples

Our award winning liaison with Heathgate Resources is an education programme being run on Witchelina for Adnyamathana youth. We are developing tourism co-activities with the Arabunna who have a property adjacent to Witchelina.

We have been engaged in two programmes with the Ngarrindjeri, undertaking plantings on Watchalunga and watering wetlands with the Raukkan community on the lower lakes, and Mannum Aboriginal Corporation watering wetlands and we have just started developing a working relationship with the Antakirinja Matu-Yankunytjatjara from west of Coober Pedy.

The Environment – “now the poor cousin”

Overall, I suppose our greatest concern is the very, very low degree of importance which is being attached to the environment – it is at the bottom of the list Nationally and State-wide with all the political parties. Not one party is acting responsibly in relation to environmental issues – in three years Australia has experienced an almost halving of the fundamentally important National Landcare Programme and seen the end of the National Reserve System Programme.

How so very disappointing to listen to our Prime Minister, the previous Environment Minister and new Energy and Environment Minister questioning the importance and value of developing renewable energy sources recently and how very concerning is it that in many parts of our country (particularly Queensland) and locally swathes of important native vegetation are being cleared.

I stated in the Annual Report last year, and I have to say the same again this year,

What all this means is that we have to virtually mark time for a while.

We will be unable to assist in the purchase of important land areas to protect native plants and animals, certainly we have had to cut back on the amount of money we can distribute via our post graduate grants scheme.

Our 35th year

This year in October we celebrate our 35th Birthday – what foresight our four founders and their friends and supporters demonstrated in 1981. We will celebrate in a number of ways during the year and I hope we see many of you at our celebratory dinner in the Adelaide Town Hall.

It will be wonderful when we have all of our Founders' walks structured and ready on Hiltaba with the Barbara Hardy walk, the Warren Bonython Walk and the Betty and Bob Lewis Walk (Betty was our first Secretary) and the Mark Bonnin Walk and David Cleland Walk being developed. Spending a week on Hiltaba with five such magnificent walks will be a wonderful attraction to the bushwalkers in our Foundation and beyond – a great way to celebrate 35 years of wonderful work by the Foundation.

Many to thank

Thank you to our re-enlivened and re-vitalized staff for your continuing input, again our donors, volunteers and supporters have rallied to our appeals and continue to help the Foundation in a myriad of ways – thank you.

Our Committee structure relies heavily on the input of its Non-Councillor members, we thank them all and of course the powerful Committee structure is so successful because of the commitment of the Council Member Chairs of those committees.

As I often comment, this Foundation would achieve only 50-60% of what it achieves if it was not for the working Councillors it is so lucky to have.

I wish to pay tribute to the personal support I receive from the Foundation's Council – Thank you Councillors and congratulations on your successful 2015-16.



Bob Lott
President



Inland bearded Dragon (Pogona vitticeps), Witchelina

CEO'S REPORT



AS NATURE FOUNDATION SA CELEBRATES ITS 35TH YEAR, I'VE REFLECTED ON ITS CONSIDERABLE INFLUENCE AND IMPACT, AND THE SCALE OF ITS ACTIVITIES. IT HAS A CRITICALLY IMPORTANT ROLE IN WORKING TO SECURE A LONG TERM FUTURE FOR SOUTH AUSTRALIA'S AMAZINGLY DIVERSE ECOLOGY AND LANDSCAPES.

The operating environment is quite different to that of 1981 when four far-sighted people in partnership with a committed government and department established what is now Nature Foundation SA. The

Founders and subsequent Nature Foundation Councils continued to find a way to make a real difference through great partnerships, a growing and wonderfully committed supporter base and by seeking out and realising opportunities.

Our operating environment continues to change rapidly. We are seeing changes to climate patterns bringing changes to rainfall, temperature and seasons. Technology is evolving at an incredible rate – a testament to human ingenuity. We are also seeing a growing youth and young adult concern for the planet, evident in my children and their friends, while paradoxically, it seems to be assigned iteratively lower priority by elected governments. We are also seeing a real emphasis on economic development as our local economy works hard to innovate in the context of a lull in the Resources Sector and a move away from local manufacturing. Increasingly prominent are industries such as cutting edge agriculture, technology, services, mining, energy as well as nature-based tourism.

Nature Foundation has an incredibly important role to play in enthusing and connecting people to nature, whether it be families, business, communities or governments. People from all walks of life are actively involved in the life of the Nature Foundation, in a myriad of ways, and derive great joy in doing so. All make a positive difference, whether it is taking a great photo and posting it on social media, being part of our many events, scientific monitoring and studies, volunteering, revegetation, sharing their stories with friends, taking on roles such as a property rotational manager, serving on the Council or committees, donating resources or being part of our growing member base.

Over the last year we have made significant progress in our work. The Water For Nature program grew to 3,300 megalitres watering 30 wetlands, thanks to great partnerships and the efforts of many. Prominent amongst these was our outgoing CEO Ian Atkinson. The aggregate number of grants to university students grew to now exceed 350, not only advancing scientific understanding of nature, but giving so many recipients a career start.

Ecotourism has developed dramatically, with the opening on Hiltaba and Witchelina Nature Reserves of walking trails and the development of nature drives together with really comprehensive track notes. Cats, foxes, goats, rabbits and buffel grass amongst a host of other pests have been targeted in dedicated control efforts to improve the prospects of vegetation and the fauna reliant on them.

Two more Bushbank properties were sold for a small profit in the beautiful Mallee of the Blanchetown area, increasing to 20 the number of properties permanently protected through this very effective

program. Nature Foundation continued to partner with companies operating in a quieter Resources sector to help them make a positive environmental difference and meet their Significant Environmental Benefit obligations arising from development which requires clearance of native vegetation. Over its 35 years, Nature Foundation has now had a role in protecting more than 11,500 square kilometres (1.15 million ha) of South Australian landscape for nature conservation.

Partnerships were also prominent through the year. High amongst these are the Commonwealth Environmental Water Holder, our three universities, the resources sector, philanthropic organisations and the Department of Environment, Water and Natural Resources. See later for an outstanding partnership example by Heathgate Resources and the Aboriginal Students on Country program.

Governance continued to strengthen through improved systems, regular monitoring and independent audit. Our way of doing business as an environmental charity was affirmed in a Senate enquiry on this theme, standing in good stead not only Nature Foundation but our emphasis on making a difference on-ground.

I am very much looking forward to the coming year, as we seek to grow our partnerships and our nature conservation, environmental watering and scientific programs, and most importantly grow our member, supporter and volunteer base. It is with sincere thanks to our supporters, Council and committee members, and our wonderful staff, who work together so productively in this most important of causes. I also wish to thank all who have made me so very welcome, since I joined Nature Foundation in February.

Hugo Hopton
Chief Executive Officer



The 2016 Hiltaba working bee.

STRATEGIC PLAN

MARCH 2014 – JUNE 2017

THE VISION: TO PLAY A SIGNIFICANT ROLE IN NATURE CONSERVATION AS SOUTH AUSTRALIA'S PREEMINENT NATURE CHARITY.

MISSION: TO BE AN APOLITICAL, NOT-FOR-PROFIT, NATURE CHARITY WHICH WORKS WITH, AND INSPIRES OTHERS TO CONSERVE, RESTORE AND SUSTAINABLY MANAGE SOUTH AUSTRALIA'S WILDLIFE AND SITES OF NATURAL, CULTURAL AND PALEONTOLOGICAL SIGNIFICANCE.

OBJECTIVES

1. To raise funds for nature conservation through voluntary contributions and beneficial partnerships with the private, public and NGO sectors.
2. To enable the long-term protection of high conservation value land and improve biodiversity values of degraded land.
3. To initiate and support projects and research that assist the conservation of nature and the natural resources of South Australia.
4. To raise awareness about the needs of the natural environment in South Australia.
5. To manage NFSA efficiently as a respected and well-supported South Australian organisation.

BACKGROUND TO THIS STRATEGIC PLAN

This plan presents the priorities, strategies and actions for Nature Foundation from March 2016 to June 2017. It was prepared taking into account the not-for-profit status of Nature Foundation and the aspirations of Nature Foundation's Council comprising Nature Foundation members. It is designed to be simple and to be used as a ready reference to guide the Council and to inform members and the general public about Nature Foundation and the nature of its business.

Objective 1

To raise funds for nature conservation through voluntary contributions and beneficial partnerships with the private, public and NGO sectors.

Target

- 1.1 Increase by 20% per annum funds from donations and events for the general operations of Nature Foundation.
- 1.2 Increase by 20% per annum funds from grants and corporate sponsorships.
- 1.3 Increase funding from government grants.
- 1.4 Increase by 10% per annum the number of members/donors.

- 1.5 Increase by 10% the value of Bequest and Major Gift contributions.
- 1.6 Increase the value of SEB funds applied to Nature Foundation properties and projects.
- 1.7 Develop new income sources.

Objective 2

To enable the long-term protection of high conservation value land and improve biodiversity values of degraded land.

Target

- 2.1 Turn over at least two BushbankSA properties per year with a positive financial result and provide for the conservation of at least 200 ha per annum under Nature Foundation Heritage Agreements.
- 2.2 Develop and deliver against a new BushbankSA Agreement.
- 2.3 Acquire new land of significant conservation value for its long-term protection.
- 2.4 Support the Para Woodlands project to implement the long-term management plan.
- 2.5 Develop and implement management plans for main Nature Foundation-owned properties (Witchelina, Hiltaba, Tiliqua, Watchalunga).
- 2.6 Implement a Water For Nature programme to deliver environmental watering for the benefit of nature conservation along the River Murray.

Objective 3

To initiate and support projects and research that assist the conservation of nature and the natural resources of South Australia.

Target

- 3.1 Provide an effective grant programme for research and conservation projects.
- 3.2 Promote research projects to support conservation on Nature Foundation properties.
- 3.3 Increase dissemination of findings of research projects.

Objective 4

To raise awareness about the needs of the natural environment in South Australia.

Target

- 4.1 Inform members, donors and sponsors about Nature Foundation's activities and fundraising initiatives.
- 4.2 Promote the work of Nature Foundation to the general community and interested allied groups.
- 4.3 Optimise the use of electronic media to promote the work of Nature Foundation.
- 4.4 Maintain an active dialogue with political decision makers.
- 4.5 Articulate the Nature Foundation position on our principles of environmental conservation.
- 4.6 Manage volunteer involvement to best support the work of Nature Foundation.
- 4.7 Develop a media contact strategy to promote the work of Nature Foundation.

Objective 5

To manage Nature Foundation efficiently as a respected and well-supported South Australian organisation.

Target

- 5.1 Meet or exceed Key Performance Indicators annually.
- 5.2 Inform stakeholders at least annually about how funds given to Nature Foundation are delivering conservation outcomes.
- 5.3 Manage investment funds to achieve maximum returns consistent with sound governance.
- 5.4 Promote, support and use sound science to identify, manage and protect land of high conservation value.
- 5.5 Ensure continuing efficient management, governance and financial accountability of Nature Foundation.

OUR LANDS



WITCHELINA

421,000 ha (4,219 sq km)

Witchelina Nature Reserve has seen a busy program of on-ground works over the past 12 months. The implementation of the Property Management Action Plan by Nature Foundation's Rotational Managers has been a particular priority area. The program aims to reduce the grazing pressure posed by goats, rabbits and other herbivores and predation pressures from feral cats, foxes and wild dogs. Marksmen have now removed 600 cats from the property since 2010. We actively participated in the Biteback program, coordinated by the SA Arid Lands Natural Resources Management Board.

Rotational managers and volunteers also began mapping and making great inroads into Buffel Grass infestations with a spraying program. Populations of zebra finch have also been monitored, with 20 boxes having been set up around watering points. This is part of a PhD study in association with Deakin and Flinders Universities.

The Heathgate Resources-sponsored Aboriginal mentoring program conducted in conjunction with the Port Augusta Secondary Schools began and gathered momentum with excellent reviews and feedback from students, teachers and traditional owners.

Research interest in the property continued to grow, with six different universities visiting to study specific aspects of both the geological and biological values of Witchelina. Several community groups have continued to support the Foundation by donating their time, including Sporting Shooters Association, Birds SA, and Bordertown Field Naturalists.

Located just outside the town of Finniss, **Watchalunga Nature Reserve** is set on 92 hectares of Fleurieu Peninsula Swamp – a vegetation type listed as critically endangered under the Environment Protection and Biodiversity Conservation Act (1999).

The most recent acquisition for Nature Foundation SA, Watchalunga is home to a variety of significant fauna including the Mount Lofty Ranges Southern Emu Wren, a listed endangered species.

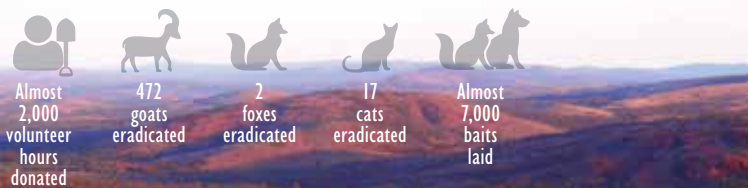
In August 2015, Nature Foundation held a workshop with a number of expert stakeholders to explore the management of both the swamps and Southern Emu Wren. This workshop was highly productive and an important step in developing long term management strategies for the property.

Conservation management at **Hiltaba Nature Reserve** has been gaining momentum under the watch of our Rotational Managers, with reducing total grazing pressure on native vegetation and predation pressure on native fauna the highest priorities.

In an effort to manage foxes and wild dogs, baits have again been laid thanks to support from Bounceback (DEVNR) and Biteback. This intensive baiting effort has been undertaken to reduce predation pressure on the struggling Yellow-footed Rock Wallaby population at Mount Friday, with signs that the program is having a positive impact.

April 2016 saw more than 50 volunteers, plus staff, Councillors, committee members and rotational managers gather at Hiltaba for the annual Grand Working Bee. Volunteers hit the ground running, working on bird surveys, weed mapping, tree planting, wombat burrow mapping, goat browse monitoring, walking trail development, fence removal and general property maintenance.

Fresh Yellow-footed Rock Wallaby scats were found at Hiltaba in new locations. This is an encouraging sign for the recovery of the population and it demonstrates that they are potentially now more widespread.



HILTABA

78,000 ha (780 sq km)



TILIQUA NATURE RESERVE

85 ha (0.85 sq km)

Tiliqua Nature Reserve near Burra is the only reserve dedicated to the conservation of the endangered Pygmy Bluetongue Lizards. A current five-year research project is aiming to develop simplified methodologies for monitoring Pygmy Bluetongue Lizard populations, to refine management strategies and to increase the involvement of local communities.

Another project, led by PhD students Jess Clayton and Torben Nielsen, has been investigating the impact of livestock grazing on the Pygmy Bluetongue. Pygmy Bluetongue Lizards require some grazing of pastures in order to access the right amount of sunlight and to be able to find and feed on grasshoppers. Too much grazing threatens this balance, so finding the right amount is a crucial factor in securing a future for the species. In September 2015, more than 80 people attended the Tiliqua Lizard Crawl, with much enthusiasm from local members of the community as well as those travelling to attend.

Project partners include Flinders University, SA Museum, Zoos SA, Department of Environment, Water and Natural Resources, Northern & Yorke Natural Resources Management (NRM) Board and the South Australian Murray Darling Basin NRM Board.



PARA WOODLANDS

500 ha (5 sq km)

Para Woodlands is a former farming property near Gawler that was generously donated by Mrs Elizabeth Law-Smith and her late husband David to Nature Foundation SA. Further connected property is owned by DEWNR, with the combined area totalling 500ha.

The Nature Foundation aims to restore grassy woodland ecosystems to their pre-European condition and a flourishing riparian system along the South Para River. This will help to provide critical habitat for fauna species, particularly woodland bird species that are declining in the Mount Lofty Ranges.

Re-instating native vegetation successfully is a major component of ecological restoration at Para Woodlands. PhD student Monique Smith (University of Adelaide) has continued her research on native grass species establishment at Para Woodlands and honours student Amy Nicholls (University of Adelaide) has undertaken her research project on establishment of eucalypts and grasses at Para Woodlands.

In June 2016, 10,000 native seedlings were planted as part of the two-day Para Woodlands planting event. About 100 people participated, assisted by a Green Army team that has spent six months working at Para Woodlands. Thanks to the dedicated DEWNR staff who coordinated the planting day, and other work throughout the year.



CYGNET PARK SANCTUARY

300 ha (3 sq km)

Cygnets Park Sanctuary is a magnificent 300 hectare property near Kingscote on Kangaroo Island. Nature Foundation SA, the Paton Family, and a silent philanthropic partner are each one third owners of the sanctuary. Over the last 10 years, former sheep paddocks have been completely revegetated, with more than 300,000 plants propagated in the Cygnet Park nursery, and direct seeding likely to establish more than a million native plants.

The program of works at Cygnet Park has now moved to the next stage of restoration, which involves assessing if the revegetation is self-sustaining and resilient. In 2015-16, postgraduate, honours and undergraduate students from the University of Adelaide, with assistance from the owners, commenced and continued studies on the establishment of pollinator networks and pollination of some of the understorey plants. The work assessed seed banks accumulating on the plants and in the soil, and whether these are adequate to allow the revegetation to re-establish after a disturbance like fire.

It also assessed the spatial arrangements of some less abundant plants, identifying those species where the individuals are widely spaced and likely to be unable to exchange pollen with conspecifics, and so are unable to set seeds. Where pollination of some plants is challenged by long distances between individual plants the solution is in-fill planting of this species, so that they can more readily exchange pollen and set seed in future years.

BUILDING CONSERVATION ON THE NATURE RESERVES



Hard at work: Restoration of the original shearers' kitchen and dining room building at Witchelina.

WITCHELINA

The last twelve months have seen continuing developments through conservation activities and to the built environs of the property. Witchelina continues to grow as a destination of choice for tourists, students and researchers, with guest numbers steadily increasing.

This year 65 architecture students from UniSA visited in April to document, conceptualise and design research, interpretation and accommodation facilities, including the shearers' kitchen and dining room.

They commenced the design of modifications to existing buildings and concepts for developments that would be required in the future in order to meet the needs of a growing stream of visitors.

A group of very enthusiastic volunteers participated in a week long training course in stone restoration using the original methods of construction, led by Heritage Stone Restorations. The result was a remarkable transformation of the original stone shearers' kitchen and dining room, which would otherwise have been lost. Thanks to a sponsorship by Electranet, it is now being used as the science centre for visiting researchers.



Shepherds' delight: Restoration of the shepherds' hut at Hiltaba.

HILTABA

Hiltaba was initially staffed with a resident caretaker, whose role was to be an active presence to guide visitors and to undertake minor works. In January this year we changed this arrangement to the very successful model used at Witchelina. A roster of managers who serve for between one and three weeks at a time brings a very wide range of skills which, in aggregate, enable Nature Foundation to progress a broader role of activities in conservation, land management and tourism development. We sincerely thank Dave and Marjory Goodenough for their commitment and wonderful service, and welcome them to the team of rotational managers.

The very generous donation from the Lewis family of a 100,000 litre tank has enabled rainwater instead of highly saline bore water to be reticulated throughout all of the buildings at the homestead and shearers' quarters, improving the welcome we can extend to visitors.

Early in the year, we hosted a drilling team, which hired out the shearers' quarters while they drilled an exploration well on the property. The funds from this went into upgrading the accommodation, which has improved our capacity to host scientists and ecotourists.

ECOTOURISM: CONNECTING PEOPLE TO NATURE



Early morning at Barber Hill, Hiltaba.

WHAT IS ECOTOURISM?

The growing nature tourism market involves travellers seeking an authentic experience in a natural environment. Ecotourism, however, is for those who are also looking to engage with local people and to learn about the plants, animals, geology and Aboriginal and European heritage of the area, coupled with their desire to make a difference through their visit.

WHY IS ECOTOURISM IMPORTANT FOR NATURE FOUNDATION SA?

Ecotourism is an exciting next step for the Nature Foundation to provide an opportunity to connect the community to nature, generate an income stream and deepen their understanding of our cause to save, protect and restore nature. The Foundation recognises that ecotourism and nature tourism represent a range of special interests and groups sharing our core commitment to conservation, learning and research.

HOW IS ECOTOURISM BEING DEVELOPED AT NATURE FOUNDATION SA?

A dedicated committee, led by Chris Reed, has been working to develop the ecotourism strategy for the Foundation. Work has focused on developing a plan to manage the activities required to position Witchelina and Hiltaba Nature Reserves as desirable destinations.

On the ground, work began in designing and interpreting a series of Nature Drives at Witchelina and Hiltaba. This is to be a staged process over three years, with three drives being developed and operating in the 2016-17 tourist season and others to follow. The drives aim to guide visitors through the landscapes of the Nature Reserves, and are accompanied by really useful track notes providing information about the natural and geological features, animals and birds, Aboriginal and pastoral history, and other points of interest.

The mix of existing accommodation options on the properties was reviewed and where needed planned upgrades made to offer an excellent range of outback accommodation options. Pricing, signage and packages have been developed, giving a strong base on which to proceed in the future.

In celebration of the 35th milestone year of the Nature Foundation a series of walking trails on Hiltaba has been further developed, commemorating the founders of the organisation. In April 2015, Nature Foundation was delighted to welcome founders' family members to open the Warren Bonython Walking Trail and Betty and Bob Lewis Walking Trail. Work in 2015-16 concentrated on the preparation of the Barbara Hardy Walking Trail. These trails lead walkers through the magnificent Gawler Ranges and unique botanical points of interest are described. With two more walking trails in planning for commissioning next year, Nature Foundation will have a great base for the wider community to explore and enjoy Hiltaba over an extended period of time.

Opportunities for further ecotourism products on Nature Foundation's other properties will be considered in the future. The season on both Witchelina and Hiltaba has been very good triggering above average rainfall with an amazing response in the native vegetation and native animals. The wildflowers were something to behold.

In addition to the diverse contributions of volunteers, rotational managers, staff and committee members to the development of ecotourism on the nature reserves, the Foundation acknowledges with gratitude the assistance provided by independent advisers including David Clegg, Angela Hazebroek (Urban and Regional Planning Solutions), Patrick James, Oli Scholz (Scholz Vinal Design), and Jodie van Deventer (Deventer Public Relations and Communications).

LEARNINGS OF THE LAND ON THE LAND

CONNECTING ABORIGINAL YOUTH ON COUNTRY AT WITCHELINA NATURE RESERVE

Nature Foundation launched a new collaborative initiative in 2016 – a series of ecology work experience camps for Aboriginal students, hosted near Lyndhurst in far north South Australia, following an approach by Heathgate Resources.

The program aims to provide Aboriginal students from Port Augusta Secondary School with an opportunity to build knowledge in land management and conservation, while developing life skills and promoting potential career pathways.

The first camp was held this year, with more planned for 2016 and three in 2017. Over each three-day program, students participated in activities including the Geocache Treasure Hunt Trail and Bird Watching and Identification Walk.

All activities were held around the homestead at Witchelina Nature Reserve, allowing students to experience the features of both Willouran and Paradise landscapes. This provided ample opportunities for the students to explore and connect with natural resources by collecting plant specimens and identifying up to 20 bird species.

Nature Foundation Ecologists and Reserve Managers supported the development of participants' skills such as map reading, conducting bird surveys, flora and fauna identification and data management, with a focus on encouraging the use of all senses to better understand local ecosystems. As part of an on-site safety induction, the students also learned how to operate UHF radios and GPS units, in the field.

The students were keen to explore the cultural use of native plants, and there was a strong sense of pride, joy and connection with the land amongst the groups.

While the program is in its infancy, initial feedback suggests it has a strong future.

"The first camp this year was a great success. The students have loved learning more about their country and are super enthusiastic to gain new skills", said Simon Finch, Industry Pathways Senior Leader at Port Augusta Secondary School.

"The only complaint was that the camps weren't long enough. [The students] wished they could stay at Witchelina longer", he said.

Since 2012, Nature Foundation has delivered Significant Environmental Benefits (SEB) offsets by improving native vegetation on Witchelina Nature Reserve, as a way to counteract land disturbance at neighbouring Beverley Mine, operated by Heathgate Resources.

Nature Foundation acknowledges support from the Department of Environment, Water and Natural Resources (DEWNR), Native Vegetation Management Unit and the Native Vegetation Council (NVC). Support from Santos Ltd, Beach Energy Ltd, Quasar Resources and Heathgate Resources are funding the protection and restoration of further 1,209 hectares of arid land vegetation.

Partnerships and collaborative activities are helping Nature Foundation to achieve its goals, foster social inclusion and create positive environmental outcomes. The Nature Foundation is working to develop more strategic relationships with Aboriginal communities, industry and government, in order to build upon these successes in the future.

For more information on Witchelina Nature Reserve, visit our website at naturefoundation.org.au/ecotourism/witchelina



Shear delight: Exploring the old shearing shed at Witchelina Nature Reserve.



Thumbs up for Witchelina: Termination Hill (Karkalpunha) is visible in the background.



Yurlu Kingfisher by J Coulthard. Image available for purchase from www.wakarla.com

ALL SENSES ON COUNTRY

During each of the workshops, students were asked to identify several key features on Witchelina Nature Reserve. These included:

- > **Karkalpunha** (Termination Hill), which is an integral part in the Kingfisher Dreaming story. Yurlu, the old kingfisher man, travelled from his home at Karkalpunha to Wilpena Pound. In Adnyamathanha culture, the story tells how the local landscapes were formed.
- > **Willouran Ranges** – the site of an ancient sea bed – is part of the story of continents colliding, and evidence of the processes that formed Gondwana.
- > **The Witchelina Shearing Shed**, portraying the history of European heritage on the property.

An award-winning partnership...



NFSA & Heathgate Resources: An award-winning partnership

The partnership between Nature Foundation and Heathgate Resources was recognised with a prestigious award this year. Heathgate Resources was awarded the 2016 Premier's Community Excellence Award in Mining and Energy: Excellence in Social Inclusion.

The initiative was noted for its 'exceptional partnership', connecting Aboriginal secondary students with opportunities to undertake training and employment in the resources sector.

Treasurer Tom Koutsantonis presented the Premier's Community Excellence Award in Mining and Energy to Jacquie Dealtry and Craig Bartels from Heathgate Resources.



WATER FOR NATURE

FROM THE RED GUM AND BLACK BOX WOODLANDS OF CALPERUM STATION, TO THE SAMPHIRE AND LIGNUM SHRUBLANDS OF SOUTH TERINGIE, WATER FOR NATURE HAS WORKED WITH LOCAL COMMUNITIES AND GOVERNMENT AGENCIES TO DELIVER 3.3 GL OF ENVIRONMENTAL WATER IN 2015-16.

The Commonwealth Environmental Water Holder continues to work with Nature Foundation SA by providing the Water for Nature program with significant allocations and funding for environmental water delivery to meet important environmental objectives. The Commonwealth has also encouraged the program to trial new modes of delivery and monitoring. It is a two-way partnership, with Nature Foundation eager to share its learnings to better inform those interested in watering wetlands and floodplains around the country.

Water for Nature focuses on sustaining the benefits of the 2010-12 River Murray floods that resulted in widespread germination of red gum, black box and lignum. The survival of these important floodplain plants is critical to replace the millions of trees and shrubs lost or seriously stressed in the millennium drought.

In 2015-16 the Water for Nature program entered into new philanthropic funding agreements with The Ian Potter Foundation and Thyne Reid. Funding provides for the program's first full-time Program Manager (Natalie Stalenberg), two part-time Regional Community Coordinators (Craig Ferber and Matt Turner), as well as the services of Environmental Consultant Dr Anne Jensen. The Regional Community Coordinators are hosted by Eastern Hills and Murray Plains Catchment Group in the Lower Murray, and Loxton District Landcare in the Riverland.

Securing this expertise provides the program with more certainty and will enable Nature Foundation to strengthen and grow its role as a leader in environmental water delivery.

Support from the West End Community Fund continued, as did our many partnerships for site-specific projects including the Australian Landscape Trust, Renmark Irrigation Trust, Central Irrigation Trust Pike River Land Management Group, Riverland West Landcare, Raukkan community, SA Water and the South Australian Government.

With more than 35 project sites across 20 complexes in 2015-16, these partnerships are critical to Water for Nature. They connect the program with local landholders, irrigators and volunteers who put in the hard-yards by refuelling our pumps, moving pipelines, and monitoring the impact on flora and fauna and the volumes of water delivered.

The strengthened Water For Nature program is being run with assistance by our two regional Community Coordinators – Craig Ferber from Loxton District landcare and Matt Turner from Eastern Hills & Murray Plains Catchment Group.



Water for Nature 2016 science exchange.

Water for Nature thrives with more than 180 volunteers



Before and After: Environmental Watering has had a wonderful impact at Yarra Creek.

LIZ AND CLINT FRANKEL ARE A GREAT EXAMPLE OF OUR VOLUNTEERS' COMMITMENT. BOTH LIZ AND CLINT RACKED UP THE HOURS OVER THE PAST YEAR TRAVELLING ACROSS THE RIVER EVERY DAY DURING THE WATERING EVENT TO ONE OF OUR FAVOURITE SITES – YARRA CREEK.

They tended and re-fuelled the pump to deliver almost 600 ML of water, and then often on hot summer days walked around the site to take photos and map the progress of the inundation for monitoring purposes.

Liz says, "One of our favourite rewards of working on the project was to stand on our deck in the evening, wine glass in hand, as the symphony of frog calls became almost deafening. We watched the wetland literally transform from a dry, parched, silent place, and into a thriving wetland, teeming with abundant, and sometimes very noisy, life."

Another site, Sugar Shack is part of the Swan Reach wetland complex, recognised as having a high conservation value. Many of the wetlands in this complex are being actively managed by Mannum Aboriginal Community Association Incorporated (MACAI) and the Department of Environment Water and Natural Resources (DEWNR). Water for Nature and MACAI delivered over 58 ML to one of the Sugar Shack wetlands, with almost instant results.

"Before watering the soil at Sugar Shack was dry and dusty and the lignum bushes were leafless and brittle. However, within a few days of turning on the pump the lignum began to turn green and grow new leaves. This transformation continued for several weeks with a remarkable growth in aquatic plants including nardoo. Soon the

frogs and waterbirds appeared and the wetland was a hive of plant and animal activity," said Matt Turner Water for Nature Regional Community Coordinator.

Towards the end of the year, the Water for Nature Committee, its partners and volunteers turned to thinking about how to prioritise the hundreds of wetlands and floodplains in need of a drink. Dr Anne Jensen, our environmental adviser, helped the committee to develop a set of criteria for prioritising potential sites. Each site was evaluated based on the criteria, and ranked in order of priority. The criteria were grouped into six themes: environmental, economic, social, cultural, political and delivery.

The environmental theme includes ratings for:

- > Potential for recovery, regeneration and breeding
- > Complexity of hydrology and water regimes
- > Complexity of habitat
- > Rare or threatened species and communities
- > Biodiversity values

Program Manager Natalie Stalenberg said, "The program has big ideas and with the generous support of philanthropic organisations, government agencies and most importantly our volunteers, Water for Nature will continue to recharge degraded wetlands and floodplains along the South Australian parts of the River Murray, and beyond."

Water For Nature program highlights

This chart plots the expansion of the Water for Nature program over the past three years.



Amount of water delivered

200ML

1100ML

3300ML

Number of sites watered

10

14

25

2013-14

2014-15

2015-16

BUSHBANK SA

SINCE 2003, NATURE FOUNDATION'S BUSHBANK PROGRAM HAS CONNECTED CONSERVATION ENTHUSIASTS WITH THE OPPORTUNITY TO BUY PATCHES OF REMNANT NATIVE VEGETATION WITH HIGH CONSERVATION VALUE. THE FOUNDATION HAS MANAGED THE RESALE OF 20 DIFFERENT PROPERTIES IN SOUTH AUSTRALIA, SECURING 12,242 HECTARES OF CONSERVATION LAND.

The current focus is the development of a major new community-titled bushland conservation precinct near the River Murray at Blanchetown. Blanchetown Bushland Estate is a former grazing property, set on 10,300 hectares that is being restored to pre-European condition. The estate is being restored in line with a Nature Foundation Heritage Agreement and Management Plan that has been designed to enhance and protect native biodiversity, and contributes towards the State's Nature Links program (River Murray Coorong corridor).

Blanchetown Bushland Estate has been divided into eleven allotments, ranging from 900 to 973 hectares, offered for sale to the public from \$95,000 to \$138,000 (GST inclusive). Each parcel has an allocated building area on one hectare – subject to Council development approvals – and a private scheme will link each property to a domestic water supply.

Blanchetown Bushland Estate borders Brookfield Conservation Park, improving the connectivity between reserves in the Murray Mallee and providing essential habitat for a wide range of native flora and fauna species.

To find out more about the current Bushbank offering, head to naturefoundation.org.au/what-we-do/bushbank-sa or contact Alex Nankivell, Conservation Programs Manager on 08 8340 2880 or 0422 267 096.

Why we bought at Blanchetown Bushland Estate

John Whitney and Kathy Paige are the buyers of the first block at Blanchetown Bushland Estate. Their motivation stemmed from a desire to honour the past and protect the future:

"With the passing of my mother in 2015, we had wondered what we could do as a personal homage to my parents. We had often discussed the idea of a holiday house or second place but both the challenge of maintaining two residences and the idea of greed had deterred us.

"We saw the Blanchetown blocks advertised in the paper. They are largely self-sufficient and fulfilled the brief as a memorial to my parents, who were very socially active in the areas of peace, social reforms and the environment. We have subsequently purchased 900 hectares of mallee scrub adjoining the Brookfield Conservation Park near Blanchetown.

"We lived in and travelled extensively through the Murray Mallee in the seventies, and with our long-term admiration of the mallee landscape, it only seemed appropriate to become involved.

"The response from friends has been interesting as we tell them of our purchase. Most are surprised at the idea and quite interested in the concept. I know as an artist I look forward to spending time on our block visually recording it."

Biological Highlights

- > 102 native plant species
- > 81 native bird species
- > 10 native reptile species
- > 8 native mammal species

Plant Species of Conservation Significance

- > Green-flower Emubush (*Eremophila subfloccosa* ssp. *glandulosa*)
- > Cotton Bush (*Maireana aphylla*)

Bird Species of Conservation Significance

- > Mallee Fowl (*Leipoa ocellata*)
- > Chestnut Quailthrush (*Cinlosoma castanotus*)
- > Striped Honeyeater (*Plectorhyncha lanceolata*)
- > Gilbert's Whistler (*Pachycephala inornata*)
- > Spotted Nightjar (*Eurostopodus argus*)
- > White Winged Cough (*Corcorax melanoramphos*)

Mammal Species of Conservation Significance

- > Southern Hairy Nosed Wombat (*Lasiorhinus latifrons*)
- > Common Dunnart (*Sminthopsis murina*)
- > Fat-tailed Dunnart (*Sminthopsis crassicaudata*)
- > Short-beaked Echidna (*Tachyglossus aculeatus*)



Kathy Paige and John Whitney (right) with Conservation Programs Manager Alex Nankivell (centre).

FUNDRAISING FOR NATURE

FUNDRAISING IS A CHALLENGING BUT EXCITING ENVIRONMENT WITH MANY NOT-FOR-PROFITS SEEKING FUNDING FROM A WIDE RANGE OF PEOPLE AND ORGANISATIONS TO HELP THEM ACHIEVE THEIR GOALS AND TO FURTHER THEIR CAUSE.

Nature Foundation SA has continued to strive to raise funds for nature conservation and has been most generously supported by individuals, corporates, government, philanthropic organisations, appeals, lottery, bequests, members, volunteers and the wider community. Nature Foundation endeavours to connect with a broad range of potential donors in order to ever better save, protect and restore nature for our community and state.

To continue growing Nature Foundation's conservation capability it is imperative that we connect and support our current donors and actively partner with new donors. This will inevitably increase our contribution to the improvement of natural biodiversity, environmental watering, protection of our native species, Aboriginal and European cultural heritage and vital research. With continued support we envisage significantly improving prospects for nature in South Australia.

Fundraising highlights

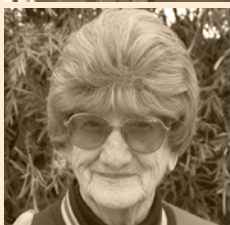
- > Corporate donors (including funds and pro bono services) including Beach Energy, Electranet, Lipman Karas, URPS, Mark Searle & Associates, Channel 10, FIVEaa, Macquarie Group, Jacobs, Electel Resources and Santos
- > Government funding was provided by the Australian Government, Department of Environment, Water and Natural Resources (DEWNR), Natural Resources Northern & Yorke, Natural Resources SA Murray-Darling Basin, Adelaide City Council and, SA Water
- > Philanthropic contributions were gratefully received from Thyne



Artist Robert Hannaford (left) with Will Thompson (centre), who bought the painting, and Bob Lott (right) at the Christmas Dinner in 2015.

- Reid Foundation, The Ian Potter Foundation, West End Community Fund, Mullum Trust and SA Power Network's Employee Foundation
- > Spring, Summer and Autumn Appeals support included contributions from members, donors, and corporate organisations
- > The SA Native Animals Cash Lottery, with multiple winners receiving fabulous cash prizes
- > Bequests are kindly considered by many including individuals, couples, families and trusts
- > Membership and volunteering is a great way to stay connected and included. Our volunteers include children, students, singles, couples, families, corporates and more.
- > Treasure Hunt for Nature had many participants and sponsors who contributed to raising over \$31,000
- > The Christmas Dinner was well supported by many and raised more than \$27,000. Contributions were made by local businesses, artists (Rob Hannaford, Alison Mitchell, Ally Parsons, Marie Parsons, Graham Chilman), members and donors.

A very generous bequest



In April 2016, a very generous bequest was received from the estate of John Custance and his mother Vi. They both shared a great love of our native animals (in particular birds) and the maintaining of habitats. In the words of Michael Erwin, Executor and friend, they wanted the funds to be used to advance the great work of Nature Foundation SA.

About a quarter has funded the immediate works program, with the balance added to the Perpetual Endowment Fund – the returns from which will support Nature Foundation SA and its works into the long term. Funds such as these are so important to making a difference to our beautiful and unique natural environment for generations to come.

A love for nature inspired a bequest from John Custance and his mother Vi.

OUR PEOPLE

STAFF

Chief Executive Officer	Hugo Hopton (From February 2016)
Conservation Programs Manager	Alex Nankivell
Fundraising & Marketing Manager	Patrick Mentzel
Communications Manager	Kathy Sharrad (From November 2015)
Administration & Marketing Manager	Natasha Harper
Water for Nature Program Manager	Natalie Stalenberg (From May 2016)
Finance Manager	Georgie Fiedler
Industry Liaison Manager	Caroline Nefiodovas

OUR THANKS TO DEPARTING STAFF

Chief Executive Officer	Ian Atkinson (Until February 2016)
Conservation Ecologist	Dr Greg Johnston (Until December 2015)
Communications Manager	Lisa Gellie (Until October 2015)

ROTATIONAL MANAGERS

Chris and Maria Reed	Marina Louter and Scott Kinlock
Brenton and Nanette Arnold	John Ovenden
Greg Bannon and Janet Thomas	Lange and Inara Powell
Phil and Susan Cole	John and Mary Schulze
Peter and Val Collins	Vic Breeding and Penny Shepley
Paul Drummond	Barry Wright and Maureen Wright OAM
Kevin and Shirley Fahey	Fred and Petra van der Heiden
Dave and Marjory Goodenough	Dave and Anne Seller

HILTABA CARETAKER MANAGERS

Dave and Marjory Goodenough (Until December 2015)
--

Our Committees

CARBON CAPTURE & CARBON CREDITS WORKING GROUP

Suzanne Ridding (Chair), David Moyle AM, Nicholas Newland AM, Dr Tim Moore and John Gavin

ECOTOURISM COMMITTEE

Chris Reed (Chair), Bob Lott, Millie Nicholls, Anne Sellar, Lange and Inara Powell, Maria Reed, Barry Wright and Maureen Wright OAM

EXECUTIVE COMMITTEE

Bob Lott (Chair), David Moyle AM, Susie Herzberg OAM and Nicholas Edwards.

FINANCE & GOVERNANCE COMMITTEE

Nicholas Edwards (Chair), Bob Lott, Susie Herzberg OAM, and Joshua Teague

FRIENDS OF NATURE FOUNDATION SA COMMITTEE

Ric Williams (Chair) John Sibly AM (Chair until March 2016), Dene Cordes PSM, Dr Barbara Hardy AO, Graeme Oats, Kaz Herbst, Jenny Steele Scott OAM, Janet Cotton, Graham Henley, Vilis Vasilevskas, Mandy Wallace and Shirley Rowe

FUNDRAISING, MARKETING & EVENTS COMMITTEE

Bob Lott (Chair), Dr Rob Morrison OAM, Dr Barbara Hardy AO, Nicholas Newland AM and Bec Hardy

LAND ACQUISITION COMMITTEE

David Moyle AM (Chair), Bob Lott, Dr Bob Inns and Brenton Gear (DEWNR)

PROPERTY MANAGEMENT COMMITTEE

Chris Reed (Chair), Bob Lott, David Moyle AM, Millie Nicholls, Brenton Arnold, Dr Travis How and Kaz Herbst

RESEARCH, PROJECTS & EDUCATION COMMITTEE

Dr Bob Sharrad AM (Chair), Susie Herzberg OAM, Dr Rob Morrison OAM, Dr David Hansman (Until Oct 2015), Millie Nicholls, Dr Travis How and Jody Gates (DEWNR)

SCIENCE REVIEW COMMITTEE

Dr Bob Sharrad AM (Chair), Dr Rob Morrison OAM, Millie Nicholls, Dr Travis How and Jody Gates (DEWNR), Susie Herzberg OAM

SIGNIFICANT ENVIRONMENTAL BENEFIT DEVELOPMENT COMMITTEE

Bob Lott (Chair), David Moyle AM, Chris Reed, Trevor Whitelaw, and John Gavin (or proxy Deb Agnew)

WATER FOR NATURE COMMITTEE

Tony Sharley (Chair), Greg Toop (Chair until July 2015), Bob Lott, David Moyle AM, Phil Cole, Dr Anne Jensen, Steve Clark, Peter Forward, Dan Mollison and Andrew Beal (DEWNR)

WATER FOR NATURE TECHNICAL ADVISORY GROUP

Prof Mike Young, Deb Nias, Dr Mark Siebentritt and Dr Keith Walker (dec)

Council Members



BOB LOTT
PRESIDENT

Bob Lott is an owner and director of Venue*Tix, Weslo Staff, Weslo Holdings, (trading as Thebarton Theatre and Holden Street Theatres) and Quorn Quandongs. He is also a biochemist, producer and manager of major events and a theatrical director and entrepreneur, and an enthusiastic environmentalist and supporter of indigenous artists. Boards/Councils: SA Jubilee 150 Board (Deputy Chair), Adelaide Festival, Royal Adelaide Show, Come Out Children's Festival and the Australian National Kennel Council. NFSA Council Member since 2003, Vice President from 2007 and President since 2011.



DAVID MOYLE AM
VICE-PRESIDENT

David Moyle AM has occupied senior academic and leadership roles at Flinders University and has been a leading environmental advocate in SA. He has served as Chair of the National Parks and Wildlife Council and Deputy Chair of the Native Vegetation Council. He is currently a Commissioner of the Environment, Resources and Development Court. David is also a past president of NFSA and the Nature Conservation Society of SA and has been a Nature Foundation Council Member since 1989.



SUSIE HERZBERG OAM
HONORARY SECRETARY

Susie has worked in urban, environmental and strategic planning in private practice, in Government and as a lecturer at the University of Adelaide. Susie is a Fellow of the Australian Institute of Company Directors. Boards/Councils: Botanic Gardens and State Herbarium (Chair), South Australian Housing Trust, Patawalonga Catchment Water Management Board, KESAB, State Cycling Council, Playford Memorial Trust, SA Wine Industry Association Environment Committee and several private companies.



NICHOLAS EDWARDS
HONORARY TREASURER

Nicholas Edwards is a practising lawyer, chartered accountant and Principal of NDEdwards & Co. He has worked in the areas of investment banking and corporate tax consultancy. He has an enthusiasm for the environment and enjoys contributing to the work of Nature Foundation.



MILLIE NICHOLLS
COUNCILLOR

Millie has been a partner in a family farm and involved in environmental work since she completed a Science degree in 1994. She has been a member of the Native Vegetation Council, the National Parks & Wildlife Council and regional boards in the Northern and Yorke Region. She received the South Australian Individual Landcarer of the Year Award in 2011.



CHRIS REED
COUNCILLOR

Chris has a long-term passion for the land and environment. He is a fourth generation farmer and still runs the farm that has been in his family since 1866. He has served two terms as Presiding Member of the SA Arid Lands Natural Resources Management Board.



DR ROB MORRISON OAM
COUNCILLOR

Rob is a professorial Fellow at Flinders University. He is a science and natural history author and broadcaster on television and radio. In 2004 he was awarded the Order of Australia for his services to conservation and science communication. In 2008 he was named the Senior Australian of the Year for South Australia.



GREG TOOP
COUNCILLOR

Greg brought a wealth of experience in real estate and knowledge of land and water issues. He is Director of E-Real Estate and Managing Director of Coorong Cove Pty Ltd. Greg was the Chair of the Water For Nature Committee and was influential in the Bushbank Program, serving as a Council member until July 2015.



DR DAVID HANSMAN
COUNCILLOR

David is a pathologist and was Director of Microbiology at the Women's and Children's Hospital for more than 25 years. David served as a Nature Foundation Council member from 2003, stepping down in October 2015.



SUZANNE RIDDING
COUNCILLOR

Suzanne has been managing her own consulting business since 2008, specialising in environmental sustainability, carbon management and climate change adaptation. Suzanne is an experienced executive, board director and company secretary, holding leadership positions in private, public and not-for-profit organisations, internationally and in Australia. Suzanne has been a Nature Foundation Council Member since 2014 and is Chair of the Carbon Capture and Carbon Credits Working Group.



PROF CHRIS DANIELS
COUNCILLOR

Professor Chris Daniels is currently Professor of Biology at UniSA and has been extensively involved in many community, conservation and science committees, groups and societies. Chris is presiding member of the Adelaide and Mount Lofty Ranges NRM Board and chair of the Nature Play SA Board. Chris has published nine books, one DVD and more than 250 scientific and community publications. Chris won the SA Premiers Science Award for Communication (2007) and the Medal for Natural History from the Field Naturalists Society (2010).



TONY SHARLEY
COUNCILLOR

Tony Sharley joined NFSA in 2015 and chairs the Water for Nature Committee. Tony's career has included working in stream and wetland ecology, soils and irrigated agriculture, wine and nature tourism, regional tourism and destination marketing. He is the creator of Murray River Walk. Boards/Councils: RAA, Country Arts SA, Conservation and Hunting Alliance of SA and RiverSmart Australia.



DR BOB SHARRAD AM
COUNCILLOR

Bob is a field biologist and lectures at Flinders University. Bob was awarded a Member of the Order of Australia in 2013 for his services to science and the environment. Bob is a past President of NFSA. He has been an active participant in a number of scientific and conservation groups and committees.

OUR PATRONS



DR BARBARA HARDY AO

Barbara is a co-founder of Nature Foundation SA. She has been working in the environmental

field in a voluntary capacity since the early 1970s, and studied Earth Sciences at Flinders University, following a Science Degree at the University of Adelaide.

Barbara has been a Commissioner of the Australian Heritage Commission, President of Nature Foundation, President of the Investigator Science and Technology Centre, and Chairman of the South Australian Landcare Committee.

Barbara was appointed an Order of Australia in 1987, received an Honorary Doctorate from Flinders University in 1993, an Advance Australia Award in 1991, an SA Great Award in 1992, an Institution of Engineers Medal in 1992, an ABC Eureka Award for the Advancement of Science in 1994, and was named South Australian Citizen of the Year in 1996 and South Australian Senior Australian of the Year in 2014.

Barbara is the Patron of the University of South Australia's Barbara Hardy Institute, which was created in 2011 and brings together scientists, engineers and social scientists to work together with a focus on the sustainability of our society.



DICK SMITH AC

Dick, founder of Australian Geographic magazine, met Barbara Hardy in 1986 and learned

of the (then) National Parks Foundation of SA and our work at Coongie Lakes Wetlands.

We were very pleased when, in June 2011, Dick agreed to become our Patron, as we appreciate what an incredibly busy man he is – an entrepreneur, businessman, aviator and political activist.

In 1986 he was awarded Australian of the Year and in 1992 he received the Lindbergh Award, an annual worldwide award given to one individual for lifetime achievement of a balance between technical advancement and environmental preservation.

Dick was appointed an Officer of the Order of Australia in 1999 for his services to the community, charity and business, and was awarded Companion of the Order of Australia (AC) in the 2015 Queen's Birthday Honours List.



REG NELSON

Reg is an exploration geophysicist with more than four decades experience in the minerals

and petroleum industries.

Reg's contribution has been recognised through honorary Life Membership of the Society of Exploration Geophysicists, the Prime Minister's Centenary Medal and the Australian Petroleum Production and Exploration Association's (APPEA) Reg Sprigg Gold Medal.

He is also a trustee of the Arkaroola Research and Education Foundation, set up by Marg and Doug Sprigg to promote environmental awareness and research at Arkaroola.

Reg has wide experience in technical, corporate and government affairs throughout Australia and internationally and was formerly Director of Mineral Development for South Australia.

He was a director for eight years of APPEA and was Chairman of its board from 2004 to 2006. Reg was Managing Director of Beach Energy Limited, a significant ASX 100 Australian-listed oil and gas explorer and producer from 1995-2015.

FELLOWS OF THE FOUNDATION

Clive Armour†
Avis Bonnin†
Dr Mark Bonnin AM†
Warren Bonython AO†
David Cleland†
John Daenke
Dr Barbara Hardy AO
Eric Jackson†
Elizabeth Law-Smith

Betty Lewis†
Bob Lewis†
David Moyle AM
Reg Nelson
William (Bill) Nankivell
Julian Reid
Dr Bob Sharrad AM
Dick Smith AC

HONORARY LIFE MEMBERS

Robert Gerard AO
Bernd Stoecker†

COLLEGE OF NATURE CHAMPIONS



The Nature Foundation is pleased that Dr Baden Teague has accepted the role as leader of the College of Nature Champions. Membership of the College is being reviewed and enlarged, with a new five-year program to commence in 2017. The full list of about thirty College members will be published in February 2017.

The College of Nature Champions is a network of ambassadors whose objective is to strengthen Nature Foundation's effectiveness and public standing, especially by building Nature Foundation's Perpetual Endowment Fund. The fund's income each year will provide untied,

recurrent money for Nature Foundation's necessary expenditure year on year.

Nature Foundation SA wishes to sincerely thank those who have been willing supporters to date, and who are bringing fresh thought and new energy to the College.

Dr Baden Teague is the new leader of The College of Nature Champions.

†Deceased

OUR CONTRIBUTORS

NATURE FOUNDATION SA IS SUPPORTED BY A DEDICATED GROUP OF VOLUNTEERS WHO BRING A RANGE OF CAPABILITIES, INCLUDING WORKS ON THE GROUND, SUPPORTING OFFICE ACTIVITIES AND CONTRIBUTING A BREADTH OF EXPERTISE AND TECHNICAL KNOWLEDGE. TO RECOGNISE THE ACHIEVEMENTS OF THESE COMMITTED INDIVIDUALS, WE SPOKE TO A FEW OF OUR VOLUNTEERS TO GET A BETTER IDEA OF WHY THEY BECAME INVOLVED AND HOW THEY VIEW THEIR TIME WITH NATURE FOUNDATION SA.



In the field: Volunteers Chris and Maria Reed.

WE LOVE THE OUTBACK

Chris and Maria Reed are actively involved in several of the committees that steer Nature Foundation's activities. In addition, Chris has been appointed as Property General Manager of the organisation, a position that sees him coordinating the Rotational Managers on Witchelina and Hiltaba – with "generous support" from Maria, he notes.

Chris and Maria's background as farmers and their love of the local environment sparked an interest in Nature Foundation SA, which led to their involvement as volunteers. "We believe in the ethos of the organisation and being retired graziers we felt like we would like to contribute to conservation in the pastoral zone," said Chris.

"You meet lots of like minded people who all work for a common outcome. We love the outback and when we're on the properties we get to explore the vast landscapes, interact with a whole range of new people and we feel very fortunate to have the opportunity to contribute to the amazing organisation that Nature Foundation is.

"In the future, we hope that Nature Foundation continues to break new ground in nature conservation in SA, and that it appeals to the wider community, governments, the private and the corporate sectors as a not-for-profit NGO that does very good things for the environment."



Chrissie Sherley spent time at Hiltaba, assisting with the clearing of new walking trails.

CONSERVATION CALLING FOR CHRISSIE

Despite having earned a degree in mechanical and aerospace engineering, Chrissie Sherley found that environmental conservation was pulling at her heartstrings.

"I'd volunteered in 2015 for Treasure Hunt for Nature, so Nature Foundation was the first one I thought of when I was considering volunteering."

Earlier this year, Chrissie spent four months with Nature Foundation, assisting with office

duties including developing slide shows, event planning, writing grant submissions and developing brochures.

During her tenure, Chrissie also made a three-day trip to Hiltaba, helping to develop the Barbara Hardy Walking Trail – an experience she remembers as one of the highlights of her time with Nature Foundation.

"My time with Nature Foundation SA helped me to improve my communication skills. I also learnt a lot about what goes into generating funds for an organisation like Nature Foundation and how those funds are then allocated to the various projects."

"I really enjoyed my work with Nature Foundation. The office was a great environment to be in, I kept learning new things and it felt really good to be putting time into a worthy cause."

For those considering volunteering with Nature Foundation, Chrissie has some encouraging advice, especially for those looking to develop their vocational skills: "Go into it with a mindset of being willing to do anything. Don't be afraid to say 'yes' to a task even if it seems daunting. You soon realise that you're capable, and it helps to build your confidence".



On top of the world! A love of the outdoors spurred Adam to volunteer for the Foundation.

HOOKED ON WITCHELINA

Adam Matthews first became involved with the Nature Foundation after receiving a year's membership for his birthday. "My first hands-on experience with Nature Foundation was at the first Witchelina working bee and I've been hooked on the place ever since."

Over the last four years he has laid floor coverings in most of the buildings at Witchelina, including the shearers' quarters and homestead at Old Mt Nor West.

His next contribution will be to go to Hiltaba and put down floor coverings in the shearers' quarters and the accommodation cottages there. All materials have been generously donated by Riga Floorings.

Adam has also volunteered in a team that has put in eight kilometres of boundary fencing at Witchelina, and he has attended a SEG trip to Hiltaba.

"I enjoyed getting away to either Hiltaba or Witchelina and meeting people from all walks of life, doing a hard day's work then just sitting around talking into the night, maybe over a couple of drinks, with no electronic devices to complicate things. Giving back to society in some way is important and I am grateful to have had this opportunity with Nature Foundation."

"I would like to think that all the amazing scenery, flora and fauna will be around for future generations to come."

WHY WE GIVE GRANTS

For more than thirty years, Nature Foundation SA has supported a range of grants and scholarships to provide a scientific basis for the conservation of our flora and fauna, and to help educate the next generations of conservationists and scientists.

Over the years our dedication to choosing high quality projects that can yield valuable information outcomes has remained constant,

but the nature of the projects has evolved. We now encourage work on Nature Foundation properties, where we provide excellent facilities for researchers. As always, we could do so much more if only we had more funds!

For more information about Nature Foundation SA scholarships and grants, visit: www.naturefoundation.org.au/grants

RESEARCH SCHOLARSHIP GRANTS 2015-2016

UNI	STUDENT	DEGREE	TOTAL GRANTED	GRANT TYPE	TITLE
Adelaide Uni	Ben Koch	Honours	\$1,500	scholarship	Analyzing climate variability in Australia using Lake Torrens as a case study
Adelaide Uni	Jack Tatler	PhD	\$2,940	scholarship	spying on dingoes in the desert: new insights into the behaviour, energetics and resource selection of free-ranging dingoes (<i>Canis lupus dingo</i>)
Adelaide Uni	Hannah Bannister	PhD	\$3,000	scholarship	Factoris influencing the reintroduction success and population persistence of brushtail possums (<i>Trichosurus vulpecula</i>) in a semi-arid environment
Flinders Uni	Ben A Parslow	PhD	\$1,500	scholarship	Biodiversity, systematics and host associations of Australian <i>Gasteruption</i> wasps.
Adelaide Uni	Erinne Stirling	PhD	\$1,500	scholarship	Short and long term effects of fire on soil properties related to nutrient cycling
Flinders Uni	Lucy Clive	PhD	\$3,000	scholarship	Translocation as a conservation strategy for the endangered pygmy bluetongue lizard: the ecological and genetic risks
Adelaide Uni	Jessie-Briar Treloar	PhD	\$1,500	scholarship	Paleoecology of vertebrates of the Late Quaternary from the Naracoorte Cave fossil deposits
Adelaide Uni	Lauren White	PhD	\$3,000	scholarship	Maintaining the genetic diversity of threatened species at Arid Recovery
Adelaide Uni	Kate Butler	Honours	\$1,500	scholarship	Trialling the use of one-way gates as a tool to combat over-population in fenced reserves
Adelaide Uni	Luke Tilley	Honours	\$1,500	scholarship	The Potential impact of Western Quolls (<i>Dasyurus geoffroii</i>) on in situ site species at Arid Recovery
Flinders Uni	Carmel Maher	PhD	\$3,000	scholarship	Generating genomic tools to assist future conservation of the pygmy bluetounge lizard (<i>Tiliqua adelaidensis</i>)
Adelaide Uni	Mr Sameh Shahin & Matthew Drabsch	Honours	\$3,000	scholarship	The geological history of Termination Hill: divining the evolution of the Northern Adelaide Rift Complex
Adelaide Uni	Patrick Taggart	PhD	\$3,000	scholarship	Investigating correlated of <i>Toxoplasma gonii</i> infection to explain its high seroprevalence on Kangaroo Island
			\$29,940		

GROUP	APPLICANT	TOTAL GRANTED	GRANT TYPE	TITLE
Friends of Parks		\$2,000	community	Friends of Parks Forum & Awards:
SA Museum	Dr Remko Leijts & Dr Katja Hogendoorn	\$3,000	community	Conservation of the Green Carpenter bee <i>Xylocopa (Lestis) aeratus</i> on Kangaroo Island
Oliphant Science Awards		\$1,200	community	sponsorship of the Oliphant Science Awards
		\$6,200		

HONOUR ROLL

NFSA SUPPORTERS

INDIVIDUALS

MAJOR BENEFACTORS (DONATION OF AT LEAST \$5,000)

Angas, Mr Alistair† & Mrs Janet
Bonython, Mr Warren AO† &
Mrs Buntly*†
Briggs, Mrs Gillian*†
Brooks, Mr Hector†
Cavill, Mr Richard
Crathern, Mr Daniel
Cross, Dr Diana W
Custance, Mr John*† & Mrs Vi*†
Daly, Mr Bob & Wendy Phillips
Darvall, Mrs Barbara
Donald, Mr W & Mrs C
Drew, Dr Michael
Gerard, Mr Robert AO
Hardy, Dr Barbara AO
Hawkes, Ms Joan D
Holt, Dr John & Mrs Mary
James, Kevin*†
Jensen, Mr Peter
Law-Smith, Mrs Elizabeth M
Lewis, Mrs Beth
Lewis, Mrs Betty*
Lewis, Ms Diana & John Todd
Ligertwood, Miss Marion*†
MacLachlan, Mr Hugh & Mrs Fiona
MacLachlan, Mrs Fiona OAM
McLachlan, The Hon Ian AO
Matthews, Mr Adam
Mitchell, Mr Tim
Murfet, Mr Denzel
O'Connor, Mr Clive & Mrs Marie
Parker, Mr Richard and Mrs Trish
Paton, Dr Barbara C
Piper, Mr Robert AO &
Mrs Margaret
Pleydell, Mr Robin & Mrs Janice
Preiss, Mr Kenneth
Radcliffe, Dr Barbara
Ransom, Mr Doug & Oliver and Ms
Helga Linnert
Rischbieth, Mrs Judith
Short, Mr Henry & Mrs Doff
Simpson, Mr Antony & Mrs Mary
Lou
Smith, Mr Dick AC
Squire, Mr Jason
Stevens, Mr Mark
Taylor, Mr Glen
van der Wel, Mr Bart
Wall, Dr Barbara
Westwood, Betty OAM*†
Wollaston, Mr Terence*†
Young, Ms Marianne

MAJOR SUPPORTERS (DONATION OF BETWEEN \$2,500-4,999)

Armour, Mrs Heather
Beer, Mr Colin† & Mrs Joan
Beer, Mr Peter & Mrs Alison
Bird, Mr Peter
Bradman, Mr John
Bristow, Mrs Gloria

Buckley, Ms Kate
Collins, Mr Peter
Collins, Mr Peter & Mrs Val
Cox, Mrs Anna OAM
Daniels, Prof Chris
Dennis, Ms Hilary
Dolan & Rebecca Hardy, Mr Richard
Duguid, Mrs Jane
Fander, Mr Hans & Mrs Judy
Fenner, Mr William G
Frankham, Mr Luke
Gray, Mr Tom
Hardy, Ms Rebecca & Dolan,
Mr Richard
Hausner, Mr Ken
Herzberg, Mrs Susie OAM & Dr Zen
Holmes, Mr Allan
Howe, Ms Anne AM
Jeffries, Mr Lachlan
Laugsford, Mr Nick & Nimmo,
Ms Heather
Laws, Mr Robert PSM
Smith, Mr Gilvray
Steele Scott, Miss Jenny OAM
Verco, Mrs Katherine D†
Wilson, Judge Andrew
Woolcock, Mr Richard & Mrs Leona
Wreford, Mr Richard & Mrs Beth

SUPPORTERS (DONATION OF BETWEEN \$500-2,499)

Adamson, Mr Peter
Allen, Mr Jim
Anderson, Mr Chris
Andrew, Ms Clara
Bennett, Mr Christopher &
Mrs Michelle
Bianco, Mr Nick
Bignell, Mr Graeme
Black, Dr Andrew OAM &
Mrs Margie
Bonnin, Mrs Avis†
Boros, Ms Catherine
Boxall, Ms Melody
Broad, Ms Margery
Brown, Mr Robert†
Buick, Mr Bryon
Burch, Mr Robert & Mrs Leanne
C McGowan
Carter, Mr Derek & Mrs Carlsa
Carthew, Prof Sue
Clark, Ms Linda Anne
Cole, Phil Mr
Cook, Mr Lyall & Mrs Lynette
Cordes, Mr Dene PSM
Coulter, Dr John R
Crafter, Mr Peter & Mrs Jenny
Crawford, Mr Michael & family
Crawford, Mrs Ann†
Crawford, Mrs Josephine M†
Curnow, Ms Pauline & Mr Harry
Greet
Daenke, Mr John
Dale, Ms Cindy
Davidson, Ms Di AM
Davis, Mr Leo

Davis, The Hon Legh
Day, Ms Rosalie
Doddridge, Mrs Nita
Downer, Lady Mary†
Dyson, Ms Megan and family
Everett, Tony & Hastings, Alison
Fellows, Ms Beverley
Foale, Miss Karen
Forward, Mr Peter & Mrs Bronwyn
Forwood, Mr Michael & Mrs Wendy
Fowler, Ms Cathy
Freeman, Mr Andrew
Freeman, Ms Wendy
Fung, Dr Chi Lam†
Furness, Dr Margaret
Gallagher, Mr James
Garrett, Mr Clinton
Garton, Ms Helen C
Gillespie, Ms Kate
Haddy, Mr Brian
Hammond, Mr Rod
Hansman, Dr David & Mrs Miriam
Hargrave, Mr Charles L†
Harnett, Ms Audrey
Harper, Mr Denis G
Harris, Mr Colin
Harvey, Mr Richard & Mrs Cecily
Hawdon, Mr Patrick Stock & Family,
Ms Angela
Hayman, Mr EG & Mrs EJ
Hayward, Ms Theresa
Hill-Smith, Mr Robert
Hoebee, Mr Aart
Jackson, Mrs Pat
Jones, Mr Graeme
Patitsas, Ms Kathleen
Kernick, Ms Lorraine
Langman, Mr Ron
Leak, Ms Nina
Lee, Mrs Margaret
Legoe, The Hon Christopher AO
& Mrs Jenny
Lester, Mr Ken†
Lewis, Mr David
Lippett, Mrs Elma†
Lott, Mr Bob
Magarey, Anthea
Mallen, Mr Nigel
Richardson, Mrs Margaret
Mart, Ms Bronwyn
Matthews, Adam, Suzanne & Emma
McAlister, Mr Keith
McConnell, Mr Rhett
McEwin, Mrs Cynthia
Michell, Mr Raymond &
Mrs Rosemary
Milne, Ms Amanda
Moyle AM, Mr David
Mudie, Mr Paul-John
Neill, Mrs Jenny
Nelson, Mrs Sue
Newland AM, Mr Nicholas
Norrie, Dr Peter
Oliver, Mr Ian & Mrs Margaret
Parsons, Mr Wolford & Mrs Marie
Pearce, Mr Graham & Mrs Glenys
Pederick, Mrs Betty

Peters, Mr Fred & Mrs Fleur
Phillips, Mr Andrew
Pierce, Mr Paul R
Pike, Mr John & Mrs Jenny
Pocock, Ms Rosemary
Prosser, Mrs Josephine
Ragless, Ms Maggy†
Read, Mr Tony
Renowden, Mrs Marie & Mr John
Romney, Mr Peter J
Rowett, Ms Sharon
Rowland, Mr Richard
Rowley, Ms Hilda
Ryan, Mr Michael
Sadlon, Ms Tania
Sakko, Mr Kerry
Sakko, Ms Rona
Sanders, Mr Frank & Mrs Judith
Scharbillig, Dr Rolf
Schwartz, Ms Melva
Shiell, Mr Mark
Sibly, Mr John AM
Slattery, Mr Peter D
Smith, Mrs Helen
Squire, Mr Barry & Mrs Celia
Stock, Mr Andrew
Stoecker, Mr Bernd†
Such, The Hon Robert†
Talbot, Mr Tyrrell
Teesdale-Smith, Ms Ngaire
Thorpe, Mr Geoffrey & Mrs Judith
Vasilevskis, Mr Vilis & Mrs Joan
Villiers, Ms Kerri
Vincent, Mrs Jeanine
Waddy, Dr John AM†
Wallace, Mr Allan
Wallis, Mr Raymond & Mrs Silvija
Walters, Mr Kenneth
Ward, Mr Brian & Mrs June
Williams, Dr David
Williams, Mr Ric & Mrs Deni
Williamson, Mr Paul
Willis, Mr Richard & Mrs Gretta
Wilson, Mr Will
Wilson, The Hon Ian† AM &
Mrs Mary
Wood, Dr Tim & Mrs Sandra
Woodall, Dr Roy AO & Mrs Barbara
Wotton, The Hon David AM &
Mrs Jill
Wyness, Mr David
Young, Prof Mike
Yule, Mrs Pamela
Zeppel, Dr Heather



GOVERNANCE REFERS TO THE FRAMEWORK OF RULES, PROCEDURES, ACTIVITIES AND RELATIONSHIPS BY WHICH THE COUNCIL MAKES AND IMPLEMENTS DECISIONS, AND INCLUDES CONTINUOUS MONITORING OF SUCH PRACTICES. THE GOAL IS TO WORK AS A COLLECTIVE TO ENSURE ACCOUNTABILITY, FAIRNESS AND TRANSPARENCY IN ALL OUR DEALINGS AND TO MAKE SURE THAT THE ROLES AND RESPONSIBILITIES OF EVERYONE INVOLVED ARE CLEARLY UNDERSTOOD. THIS INCLUDES THE PARTICULAR ROLES OF COUNCIL AND COMMITTEE MEMBERS, AND THOSE OF STAFF, VOLUNTEERS AND MEMBERS AS A WHOLE.

The Finance and Governance Committee continues to meet monthly, dealing not only with financial matters but also with the matters of governance required of charities such as Nature Foundation SA.

In the past year, the Council has continued its practice of reviewing its Constitution, both as a reminder to Council Members of these rules and as an opportunity to consider where improvements to better practise could be made. The proposed amendments will be taken to the 2016 Annual General Meeting.

Council has also reviewed and monitored its Governance Manual. Amendments over the past year have included a Confidentiality Policy, as well as changes to ensure responsibility for compliance is shared by all Council Members, to clarify the roles of volunteers and to ensure that the Terms of Reference for all Council, committees and working parties are appropriate to the work of such committees.

The Finance and Governance Committee meets regularly with investment advisers to ensure it is complying with trustee responsibilities as outlined in both the Trustee Act and the NFSA Investment Policy.

Policies included in the Operating Procedures Manual continue to guide staff contracts, conditions and entitlements as well as operating matters such as animal ethics, firearms, safety and vehicle use.

The Council has adopted procedures to ensure continuity, succession planning and consideration of an appropriate skills mix of Council Members. Revision of the strategic plan was commenced with a very productive workshop of Council and staff.

Nature Foundation has complied with the reporting required by the Office of Consumer and Business Affairs and the Australian Charities and Not-for Profits Commission (ACNC).

The Council of Nature Foundation SA recognises the importance of sound governance practices and continues to comply with appropriate practices. The Council recognises that it has a responsibility to operate lawfully and according to the Foundation's Constitution to achieve its stated purpose.



Walking trail working bee at Hiltaba.

NATURE FOUNDATION SA INC.

FINANCIAL REPORT FOR THE YEAR ENDED 30 JUNE 2016

- 24 COUNCIL'S REPORT**
 - AUDITOR'S INDEPENDENCE DECLARATION**
- 25 STATEMENT OF PROFIT OR LOSS AND
OTHER COMPREHENSIVE INCOME**
 - STATEMENT OF FINANCIAL POSITION**
- 26 STATEMENT OF CHANGES IN
MEMBERS FUNDS**
 - STATEMENT OF CASH FLOWS**
- 27 NOTES TO FINANCIAL STATEMENTS**
- 30 STATEMENT BY MEMBERS OF THE COUNCIL**
- 31 INDEPENDENT AUDITOR'S REPORT**

ABN 24 131 531 874

COUNCIL'S REPORT

The Council members present their report together with the financial report of Nature Foundation SA Inc. for the year ended 30 June 2016 and auditor's report thereon.

Council members' names

The names of the Council members in office at any time during or since the end of the year are:

Bob Lott (President)
David Moyle AM (Vice President)
Susie Herzberg OAM (Honorary Secretary)
Nicholas Edwards (Honorary Treasurer)
David Hansman (Resigned 22 October 2015)
Rob Morrison OAM
Millie Nicholls
Chris Reed
Suzanne Ridding
Bob Sharrad AM
Greg Toop (Resigned 20 July 2015)
Tony Sharley (Appointed 22 October 2015)
Chris Daniels (Appointed 18 April 2016)

The Council members have been in office since the start of the year to the date of this report unless otherwise stated.

Results

The loss of the association for the year amounted to \$189,774 [2015: \$133,788].

Significant changes in state of affairs

There were no significant changes in the association's state of affairs that occurred during the financial year, other than those referred to elsewhere in this report.

Principal activities

The principal activities of the association during the year were:

1. To raise funds for nature conservation;
2. To enable the long term protection of high conservation value land and improve biodiversity values of degraded land;
3. To initiate and support projects and research which assist the conservation of nature and the natural resources of South Australia; and
4. To raise awareness about the needs of the natural environment in South Australia.

Auditor's independence declaration

A copy of the auditor's independence declaration in relation to the audit for the financial year is provided with this report.

Signed on behalf of the members of the Council.



Council member: Bob Lott (President)



Council member: Nicholas Edwards (Honorary Treasurer)

Dated this 5th day of October 2016



PITCHER PARTNERS
ACCOUNTANTS AUDITORS & ADVISORS

Level 1, 100 Hunt Street
Adelaide SA 5000
Australia
Tel: 08 8175 2800
Fax: 08 8175 2885
www.pitcher.com.au
enquiries@pitcher-sa.com.au

Postal Address:
PO Box 2036, Hunt Street
Adelaide SA 5000
Australia


Pitcher Partners is an association of independent firms
Adelaide | Brisbane | Melbourne | Newcastle | Perth | Sydney

**AUDITOR'S INDEPENDENCE DECLARATION
TO THE MEMBERS OF NATURE FOUNDATION SA Inc.**

In relation to the independent audit for the year ended 30 June 2016, to the best of our knowledge and belief there have been:

(i) No contraventions of the auditor independence requirements of the APES 110 Code of Ethics for Professional Accountants; and

(ii) No contraventions of any applicable code of professional conduct.


A P FAULKNER
Principal


PITCHER PARTNERS
Adelaide

Date: 6th October 2016

Pitcher Partners SA Pty Ltd ABN 36 12 219 735
Lazily limited by a scheme approved under Professional Standards Legislation

an international member of
BAKER TILLY
INTERNATIONAL
Offices throughout the world

STATEMENT OF PROFIT OR LOSS AND OTHER COMPREHENSIVE INCOME	Note	2016	2015
FOR THE YEAR ENDED 30 JUNE 2016		\$	\$
Revenue	3	1,649,692	1,566,908
Other income	3	6,142	121,568
	3	1,655,834	1,688,476
Less: expenses			
Employee benefits expenses		(643,071)	(650,414)
Research & community grants		(84,024)	(185,272)
Business expenses		(127,577)	(151,940)
Depreciation and amortisation expenses		(75,104)	(76,492)
Loss on sale of shares		(238,708)	-
Finance costs		(31,657)	(30,874)
Water For Nature		(246,938)	(147,368)
Witchelina expenses		(195,843)	(241,789)
Para Woodlands expenses		(264,957)	(258,756)
Hiltaba expenses		(86,044)	(76,432)
Bushbank expenses		(20,487)	(10,967)
Tiliqua expenses		(2,124)	(1,430)
Watchalunga expenses		(1,835)	(17,301)
Carpenter Rocks Contribution		(40,000)	-
Net movement in committed funds		313,454	82,094
Events and other expenses		(100,693)	(55,323)
		(1,845,608)	(1,822,264)
(Deficit) for the year		(189,774)	(133,788)
Other comprehensive income/(loss)			
<i>Items that may be reclassified subsequently to profit and loss</i>			
Change in fair value of available for sale financial assets, net of tax		(332,516)	(19,982)
(Gain) or loss on disposal of financial assets recognised in profit or loss		238,708	(87,941)
		(93,808)	(107,923)
Other comprehensive loss for the year		(93,808)	(107,923)
Total comprehensive loss		(283,582)	(241,711)

STATEMENT OF FINANCIAL POSITION	Note	2016	2015
AS AT 30 JUNE 2016		\$	\$
Current assets			
Cash and cash equivalents	4	2,547,500	2,364,876
Receivables	5	198,617	151,694
Other financial assets	6	5,335,044	5,633,771
Total current assets		8,081,161	8,150,341
Non-current assets			
Property, plant and equipment	7	5,694,946	5,734,016
Land held for sale	8	462,390	535,390
Total non-current assets		6,157,336	6,269,406
Total assets		14,238,497	14,419,747
Current liabilities			
Payables	9	232,161	36,994
Borrowings	10	-	2,431
Provisions	11	73,848	87,669
Other liabilities	12	1,307,899	1,384,482
Total current liabilities		1,613,908	1,511,576
Total liabilities		1,613,908	1,511,576
Net assets		12,624,589	12,908,171

This table continued from page 25

	Note	2016	2015
		\$	\$
Accumulated funds			
Reserves	13	5,916,071	6,026,554
Accumulated surplus / (deficit)	14	6,708,518	6,881,617
Total accumulated funds		12,624,589	12,908,171

STATEMENT OF CHANGES IN MEMBERS FUNDS	RESERVES	RETAINED SURPLUS	TOTAL EQUITY
FOR THE YEAR ENDED 30 JUNE 2016	\$	\$	\$
Balance as at 1 July 2014	8,695,488	4,454,394	13,149,882
(Deficit) for the year	-	(133,788)	(133,788)
Change in fair value of financial assets	(19,982)	-	(19,982)
Gain on disposal of financial assets recognised in profit or loss	(87,941)	-	(87,941)
Transfer from Para Woodlands Capital Reserve	(2,561,011)	2,561,011	-
Balance as at 30 June 2015	6,026,554	6,881,617	12,908,171
Balance as at 1 July 2015	6,026,554	6,881,617	12,908,171
(Deficit) for the year	-	(189,774)	(189,774)
Change in fair value of financial assets	(332,516)	-	(332,516)
Loss on disposal of financial assets recognised in profit or loss	238,708	-	238,708
Total comprehensive income for the year	(93,808)	(189,774)	(283,582)
Transfer to Para Woodland Capital Reserve	(16,675)	16,675	-
Balance as at 30 June 2016	5,916,071	6,708,518	12,624,589

STATEMENT OF CASH FLOWS	Note	2016	2015
FOR THE YEAR ENDED 30 JUNE 2016		\$	\$
Cash flow from operating activities			
Receipts		1,244,932	971,328
Payments to suppliers and employees		(1,477,703)	(1,882,740)
Dividends received		332,720	342,381
Interest received		62,453	92,669
Finance costs		(331)	(1,141)
GST Received/(Paid)		11,234	(30,725)
Net cash provided by / (used in) operating activities	15(b)	173,305	(508,228)
Cash flow from investing activities			
Proceeds from sale of investment in shares		1,310,198	765,647
Proceeds from sale of land		81,818	179,628
Payment for property, plant and equipment		(36,033)	(212,090)
Payment for investment in shares		(1,346,664)	(1,110,027)
Net cash provided by / (used in) investing activities		9,319	(376,842)
Cash flow from financing activities			
Repayment of borrowings		-	(8,521)
Net cash provided by / (used in) financing activities		-	(8,521)
Reconciliation of cash			
Cash at beginning of the financial year		2,364,876	3,258,467
Net increase / (decrease) in cash held		182,624	(893,591)
Cash at end of financial year	15(a)	2,547,500	2,364,876

The accompanying notes form part of these financial statements.

NOTES TO THE FINANCIAL STATEMENTS

Nature Foundation SA Inc.
ABN: 24 131 531 874
For the year ended 30 June 2016

NOTE 1: STATEMENT OF SIGNIFICANT ACCOUNTING POLICIES

This financial report is a special purpose financial report prepared in order to satisfy the financial report preparation requirements of the *Australian Charities and Not-for-profits Commissions Act 2012* and *The Associations Incorporation Act 1985*. The Council has determined that the association is not a reporting entity. Nature Foundation SA Inc. is a not-for-profit entity for the purpose of preparing the financial statements.

The financial report was approved by the Council as at the date of the Council's report.

The financial report complies with the recognition and measurement requirements of the Australian Accounting Standards but does not comply with the disclosure requirements of these standards.

(a) Basis of preparation of the financial report

Historical Cost Convention

The financial report has been prepared under the historical cost convention, as modified by revaluations to fair value for certain classes of assets and liabilities as described in the accounting policies.

(b) Contributions - Government Grants and Donations

A non-reciprocal contribution or grant is recognised when the entity obtains control of the contribution or grant and it is probable that the economic benefits will flow to the entity, and the amount of the contribution or grant can be measured reliably.

If conditions attached to the contribution or grant that must be satisfied before the entity is eligible to receive the contribution, recognition of contribution or income is deferred until those conditions are met.

A non-reciprocal donation is recognised when the right to receive a donation has been established.

When the entity receives grants but is obliged to give directly approximately equal value to the contributor, recognition of grant income will be deferred until the delivery of service.

(c) Cash and cash equivalents

Cash and cash equivalents include cash on hand and at banks, short-term deposits with an original maturity of three months or less held at call with financial institutions, and bank overdrafts. Bank overdrafts are shown within borrowings in current liabilities in the statement of financial position.

(d) Financial instruments

Available-for-sale

Available-for-sale financial assets include any financial assets not included in the above categories or are designated as such on initial recognition. Available-for-sale financial assets are subsequently measured at fair value. Unrealised gains and losses arising from changes in fair value are taken directly to equity. The cumulative gain or loss is held in equity until the financial asset is de-recognised, at which time the cumulative gain or loss held in equity is recognised in profit or loss.

Non-listed investments for which the fair value cannot be reliably measured, are carried at cost and tested for impairment.

(e) Property, plant and equipment

Each class of plant and equipment is carried at cost or fair value less, where applicable, any accumulated depreciation and any accumulated impairment losses.

Plant and equipment

Plant and equipment is measured at cost. Where plant and equipment was acquired at no cost or for a nominal amount, cost is deemed to be

the fair value as at the acquisition date.

Depreciation

The depreciable amount of all property, plant and equipment is depreciated over their estimated useful lives commencing from the time the asset is held ready for use. Land and the land component of any class of property, plant and equipment is not depreciated.

Freehold land is carried at cost or at independent or Council's valuation.

(f) Land held for resale

Land held for development and resale is valued at the lower of cost and net realisable value. Cost includes the cost of acquisition, development, foreign currency movements, borrowing costs and holding costs until completion of development. Borrowing costs, foreign currency movements and holding charges incurred after development are expensed. Profits are brought to account on the signing of an unconditional contract of sale.

(g) Provisions

Provisions are recognised when the association has a legal or constructive obligation, as a result of past events, for which it is probable that an outflow of economic benefits will result and that outflow can be reliably measured.

(h) Employee benefits

(i) Short-term employee benefit obligations

Liabilities arising in respect of wages and salaries, annual leave, accumulated sick leave and any other employee benefits (other than termination benefits) expected to be settled wholly before twelve months after the end of the annual reporting period are measured at the (undiscounted) amounts based on remuneration rates which are expected to be paid when the liability is settled. The expected cost of short-term employee benefits in the form of compensated absences such as annual leave and accumulated sick leave is recognised in the provision for employee benefits. All other short-term employee benefit obligations are presented as payables in the statement of financial position.

(ii) Long-term employee benefit obligations

The provision for other long-term employee benefits, including obligations for long service leave and annual leave, which are not expected to be settled wholly before twelve months after the end of the reporting period, are measured at the present value of the estimated future cash outflow to be made in respect of the services provided by employees up to the reporting date. Expected future payments incorporate anticipated future wage and salary levels, durations of service and employee turnover, and are discounted at rates determined by reference to market yields at the end of the reporting period on high quality corporate bonds that have maturity dates that approximate the terms of the obligations. Any re-measurements for changes in assumptions of obligations for other long-term employee benefits are recognised in profit or loss in the periods in which the change occurs.

Other long-term employee benefit obligations are presented as current liabilities in the statement of financial position if the entity does not have an unconditional right to defer settlement for at least twelve months after the reporting date, regardless of when the actual settlement is expected to occur. All other long-term employee benefit obligations are presented as non-current liabilities in the statement of financial position.

(i) Goods and services tax (GST)

Revenues, expenses and purchased assets are recognised net of the amount of GST, except where the amount of GST incurred is not recoverable from the Tax Office. In these circumstances the GST is recognised as part of the cost of acquisition of the asset or as part of an item of the expense. Receivables and payables in the statement of financial position are shown inclusive of GST.

Cash flows are presented in the statement of cash flows on a gross basis, except for the GST component of investing and financing activities, which are disclosed as operating cash flows.

(j) Comparatives

Where necessary, comparative information has been reclassified and repositioned for consistency with current year disclosures.

NOTE 2: ACCOUNTING STANDARDS ISSUED BUT NOT YET EFFECTIVE

The AASB has issued a number of new and amended Accounting Standards and Interpretations that have mandatory application dates for future reporting periods, some of which are relevant to the association. The association has decided not to early adopt any of these new and amended pronouncements. The association's assessment of the new and amended pronouncements that are relevant to the association but applicable in future reporting periods is set out below.

AASB 9: Financial Instruments (December 2014), AASB 2014-7: Amendments to Australian Accounting Standards arising from AASB 9 (December 2014), AASB 2014-8: Amendments to Australian Accounting Standards arising from AASB 9 (December 2014) - Application of AASB 9 (December 2009) and AASB 9 (December 2010) (applicable for annual reporting periods commencing on or after 1 January 2018).

These Standards will replace AASB 139: Financial Instruments: Recognition and Measurement. The key changes that may affect the association on initial application of AASB 9 and associated amending Standards include:

- > simplifying the general classifications of financial assets into those carried at amortised cost and those carried at fair value;
- > permitting entities to irrevocably elect on initial recognition to present gains and losses on an equity instrument that is not held for trading in other comprehensive income (OCI);
- > simplifying the requirements for embedded derivatives, including removing the requirements to separate and fair value embedded derivatives for financial assets carried at amortised cost;
- > requiring an entity that chooses to measure a financial liability at fair value to present the portion of the change in its fair value due to changes in the entity's own credit risk in OCI, except when it would create an 'accounting mismatch';
- > introducing a new model for hedge accounting that permits greater flexibility in the ability to hedge risk, particularly with respect to non-financial items; and
- > requiring impairment of financial assets carried at amortised cost to be based on an expected loss approach.

Although the Council members anticipate that the adoption of AASB 9 may have an impact on the association's financial instruments, including hedging activity, it is impracticable at this stage to provide a reasonable estimate of such impact.

NOTE 3: REVENUE AND OTHER INCOME

	2016	2015
	\$	\$
Revenue		
Donations	174,278	182,932
Bequests	184,925	32,544
Commonwealth & State Government assistance	384,408	210,475
Interest & Dividend income	395,173	435,050
Grants	31,571	94,900
Significant Environmental Benefit offset payment	270,581	347,798
Corporate Sponsorship	40,000	157,500
Memberships, events income and other	168,756	105,709
	1,649,692	1,566,908
Other Income		
Profit on sale of land	6,142	33,627
Profit on sale of investments	-	87,941
	6,142	121,568
	1,655,834	1,688,476

NOTE 4: CASH AND CASH EQUIVALENTS

Cash on hand	500	500
Cash at bank	453,987	103,161
Cash on deposit	2,093,013	2,261,215
	2,547,500	2,364,876

NOTE 5: RECEIVABLES

Current		
Other receivables	198,617	151,694

NOTE 6: OTHER FINANCIAL ASSETS

<i>Available-for-sale financial assets at fair value;</i>		
Para Woodlands funds	4,337,714	4,603,558
Roy and Marjory Edwards Scholarship funds	378,705	394,111
Nature Foundation funds	505,775	543,602
Water Licence	112,850	92,500
Total available-for-sale financial assets at fair value	5,335,044	5,633,771

NOTE 7: PROPERTY, PLANT AND EQUIPMENT

	2016	2015
	\$	\$
Land		
Freehold and leasehold land		
At cost	5,322,295	5,322,295
Plant and equipment		
Plant and equipment at cost	610,960	574,927
Accumulated depreciation	(302,369)	(238,353)
	308,591	336,574
Motor vehicles at cost	151,312	151,312
Accumulated depreciation	(87,252)	(76,165)
	64,060	75,147
Total plant and equipment	372,651	411,721
Total property, plant and equipment	5,694,946	5,734,016

NOTE 8: OTHER ASSETS

Non-Current		
Land held for sale	462,390	535,390

Land held for sale includes properties purchased by the Bushbank fund, which have high quality native vegetation that is considered to represent South Australia's diverse and valuable natural heritage. The protection of this diversity is achieved by applying a nature conservation covenant and reselling these properties to new owners who are required to conserve and protect this natural environment.

NOTE 9: PAYABLES

Current		
<i>Unsecured liabilities</i>		
Sundry creditors and accruals	232,161	36,994

NOTE 10: BORROWINGS

Current		
<i>Unsecured liabilities</i>		
Goods mortgage facility	-	2,431

NOTE 11: PROVISIONS

Current			
Employee benefits	(a)	73,848	87,669
(a) Aggregate employee benefits liability		73,848	87,669

NOTE 12: OTHER LIABILITIES

	2016	2015
	\$	\$
Current		
Barbara Hardy Fund for Nature	-	51,338
Para Woodlands Operating Fund	-	175,630
Nilpena Contribution	47,211	47,211
Orange Bellied Parrot	30,836	43,717
Witchelina Reserve for Conservation from SEB funds	631,106	863,066
Perpetual Endowment Fund	150,620	15,000
Other projects	173,524	150,790
Water For Nature and Sponsorship income received in advance	274,602	37,730
	1,307,899	1,384,482

NOTE 13: RESERVES

Available for sale financial asset reserve	621,931	554,729
Capital reserves	5,294,140	5,471,825
	5,916,071	6,026,554

The available for sale financial asset reserve is used to record movements in fair values of financial assets classified as available for sale.

The Capital Reserve is used to record the cash and other financial assets \$5million of capital funds provided by an individual donor. The intention is for the investment principal plus CPI to be preserved in perpetuity and that the annual investment earnings will be applied for restoration works on the Para Woodlands Reserve.

NOTE 14: ACCUMULATED SURPLUS / (LOSSES)

Accumulated surplus at beginning of year	6,881,617	4,454,394
Net profit / (loss)	(189,774)	(133,788)
Transfers from / (to) reserves	16,675	2,561,011
	6,708,518	6,881,617

NOTE 15: CASH FLOW INFORMATION*(a) Reconciliation of cash*

Cash at the end of the financial year as shown in the statement of cash flows is reconciled to the related items in the statement of financial position is as follows:

Cash on hand	500	500
Cash at bank	453,987	103,161
At call deposits with financial institutions	2,093,013	2,261,215
	2,547,500	2,364,876

(b) Reconciliation of cash flow from operations with profit after income tax

Profit / (loss) from ordinary activities after income tax	(189,774)	(133,788)
---	-----------	-----------

Adjustments and non-cash items

Depreciation	75,104	76,492
Net (gain) / loss on disposal of land	(6,142)	(33,627)
Net (gain) / loss on disposal of financial instruments	238,708	(87,941)

This table continued from page 29

	2016	2015
	\$	\$
Changes in operating assets and liabilities		
(Increase) / decrease in receivables	(25,106)	29,281
(Increase) / decrease in other assets	(21,817)	34,223
Increase / (decrease) in grants received in advance	236,872	(288,243)
Increase / (decrease) in payables	(124,724)	(65,498)
Increase / (decrease) in provisions	(13,972)	6,702
GST movement	4,156	(45,829)
Cash flows from operating activities	173,305	(508,228)

NOTE 16: RELATED PARTY TRANSACTIONS

(a) Transactions with Council Members

Council member Chris Reed has a contract for provision of services to Nature Foundation for which he received a pecuniary benefit of \$9,051 (\$8,215 in 2015).

Council member Millie Nicholls agisted sheep on the Para Woodlands Reserve and the Foundation received the payment of \$4,735 in 2016 financial year.

Both transactions are routinely declared to the council as required by the Nature Foundation constitution.

NOTE 17: CAPITAL AND LEASING COMMITMENTS

(a) Operating lease commitments

Non-cancellable operating leases contracted for but not capitalised in the financial statements:

Payable		
- not later than one year	24,462	22,000
	24,462	22,000

Contingent rental expenses

The property lease commitment is for the Nature Foundation office, The Manse, 32 Holden St, Hindmarsh and is a non-cancellable operating lease with a term of 5 years to 11 June 2016. The lease has been extended to 30 June 2017 with rental fee of \$24,462 per annum (GST exclusive). The rental will be subject to a CPI review on 1 January 2017.

(b) Capital expenditure commitments:

Land purchase	-	40,000
---------------	---	--------

NOTE 18: EVENTS SUBSEQUENT TO REPORTING DATE

There has been no matter or circumstance, which has arisen since 30 June 2016 that has significantly affected or may significantly affect:

- the operations, in financial years subsequent to 30 June 2016, of the association, or
- the results of those operations, or
- the state of affairs, in financial years subsequent to 30 June 2016, of the association.

NOTE 19: ASSOCIATION DETAILS

The registered office of the association is:

Nature Foundation SA Inc.
32 Holden St
Hindmarsh SA

STATEMENT BY MEMBERS OF THE COUNCIL

The Council has determined that the association is not a reporting entity and that this special purpose financial report should be prepared in accordance with the accounting policies outlined in Note 1 to the financial statements.

In the opinion of the Council the financial report as set out on pages 4 - 17:

- Presents fairly the financial position of Nature Foundation SA Inc. as at 30 June 2016 and performance for the year ended on that date.
- At the date of this statement, there are reasonable grounds to believe that Nature Foundation SA Inc. will be able to pay its debts as and when they become due and payable.

This declaration is made in accordance with a resolution of the committee and is signed for and on behalf of the committee by:



Member: Bob Lott (President)



Member: Nicholas Edwards (Honorary Treasurer)

Dated this 5th day of October 2016

Nature Foundation SA Inc.
 ABN: 24 131 531 874
 For the year ended 30 June 2016



Level 1, 100 Hutt Street
 Adelaide SA 5000
 Australia
 Tel: 08 8759 2800
 Fax: 08 8759 2885
 www.pitcher.com.au
 enquiries@pitcher-sa.com.au

Pitcher Partners is an association of Independent Firms
 Adelaide | Brisbane | Melbourne | Newcastle | Perth | Sydney

NATURE FOUNDATION SA INC.
 ABN 24131531874

**INDEPENDENT AUDITOR'S REPORT
 TO THE MEMBERS OF
 NATURE FOUNDATION SA INC.**

We have audited the accompanying financial report, being a special purpose financial report of Nature Foundation SA Inc., which comprises the statement of financial position as at 30 June 2016, the statement of profit or loss and other comprehensive income, statement of changes in members funds and statement of cash flows for the year then ended, notes comprising a summary of significant accounting policies and other explanatory information, and the statement by Members of the Council.

Responsibility of the Members of the Council

The Members of the Council are responsible for the preparation and fair presentation of the financial report and have determined that the basis of preparation described in Note 1 to the financial report is appropriate to meet the requirements of *Australian Charities and Not-for-profits Commission Act 2012 and Associations Incorporation Act 1985*, and is appropriate to meet the needs of the members.

The Members of the Council's responsibility also includes such internal control as the Members of the Council determine is necessary to enable the preparation and fair presentation of a financial report that is free from material misstatement, whether due to fraud or error.

Auditor's Responsibility

Our responsibility is to express an opinion on the financial report based on our audit. We conducted our audit in accordance with Australian Auditing Standards. Those standards require that we comply with relevant ethical requirements relating to audit engagements and plan and perform the audit to obtain reasonable assurance about whether the financial report is free from material misstatement.

An audit involves performing procedures to obtain audit evidence about the amounts and disclosures in the financial report. The procedures selected depend on the auditor's judgement, including the assessment of the risks of material misstatement of the financial report, whether due to fraud or error. In making those risk assessments, the auditor considers internal control relevant to the association's preparation and fair presentation of the financial report in order to design audit procedures that are appropriate in the circumstances, but not for the purpose of expressing an opinion on the effectiveness of the association's internal control. An audit also includes evaluating the appropriateness of accounting policies used and the reasonableness of accounting estimates made by the Members of the Council, as well as evaluating the overall presentation of the financial report.

We believe that the audit evidence we have obtained is sufficient and appropriate to provide a basis for our audit opinion.



NATURE FOUNDATION SA INC.
 ABN 24 131 531 874

**INDEPENDENT AUDITOR'S REPORT
 TO THE MEMBERS OF
 NATURE FOUNDATION SA INC.**

Independence

In conducting our audit, we have complied with APES 110 Code of Ethics for Professional Accountants.

Opinion

In our opinion, the financial report of Nature Foundation SA Inc. for the year ended 30 June 2016 has been prepared, in all material respects, in accordance with Division 60 of the *Australian Charities and Not-for-profits Commission Act 2012*, the *Australian Charities and Not-for-profits Commission Regulation 2013*, and *Associations Incorporation Act 1985*.

Basis of Accounting

Without modifying our opinion, we draw attention to Note 1 to the financial report, which describes the basis of accounting. The financial report has been prepared to assist Nature Foundation SA Inc. to meet the requirements of the *Australian Charities and Not-for-profits Commission Act 2012 (ACNC Act)* and *Associations Incorporation Act 1985*. As a result, the financial report may not be suitable for another purpose.

A P FAULKNER

Principal

Date: 6th October 2016

PITCHER PARTNERS

Adelaide

CORPORATE PARTNERS

MAJOR BENEFACTORS



MAJOR SUPPORTERS



SEB SUPPORTERS



Disclaimer: The Donor Recognition Level information comprises data drawn from over the last five years and although we believe this information to be correct, we are unable to guarantee accuracy.

CORPORATE SUPPORTERS



EVENT SPONSORS



HOW CAN YOU HELP NATURE?

NATURE AT ITS HARSH, MOST BEAUTIFUL AND DIVERSE CAN BE FOUND IN SOUTH AUSTRALIA. SEASONS CAN TURN AN APPARENT DESERT INTO A PALETTE OF THE MOST BEAUTIFUL COLOURS. WETLANDS CAN TEEM WITH BIRDLIFE FOUND ONLY HERE, OR VISITING FROM AS FAR AWAY AS SIBERIA. PLANTS AND ANIMALS FOUND IN NO OTHER PLACE ON EARTH AROUND.

This is our long-term goal for nature in South Australia. Realising this picture cannot be left to chance. It relies on the heart, commitment, resources and the endeavours of many. If this is you, there are many ways to help.

JOIN UP

Join with like-minded people in discussing, working on or contributing to nature conservation. Nature Foundation will warmly welcome you as a member, if you are not already. Membership matters as it is the base from which we can influence and achieve.

VOLUNTEER

Every skill is needed. We would love you to join our wonderful community of volunteers, who this year have joined working bees on our nature reserves, helped organise and serve in awareness raising events, planted thousands of native plants, assisted in the office, gathered scientific evidence, promoted nature conservation via social media or peered down spider holes at Pygmy Bluetongue Lizards.

DONATE

So much has been achieved through the generosity of our donors. Bequests and donations have enabled nature science to be progressed, students to get out of the lab and into the landscape, our organisation to operate and whole properties and endangered species to be protected and restored.

HOW TO GET INVOLVED

Please do not hesitate to speak to a member of staff or Council, connect through our website, social media, phone our office, or drop in.

32 Holden Street, Hindmarsh SA 5007

PO Box 448, Hindmarsh, SA, 5007

Ph: 08 8340 2880

Email: naturefoundationsa@nfsa.org.au

[facebook.com/NFSAI](https://www.facebook.com/NFSAI) [@NatureFSA](https://twitter.com/NatureFSA) [@NatureFoundation_SA](https://www.instagram.com/NatureFoundation_SA)

www.naturefoundation.org.au